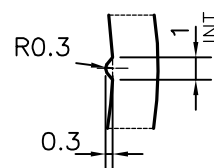
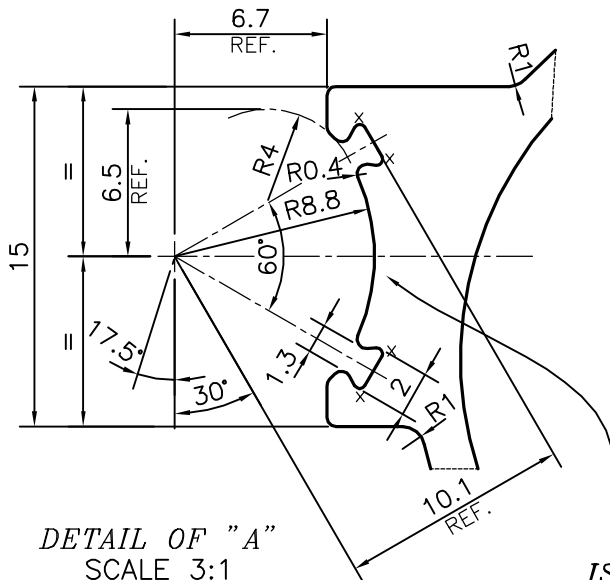
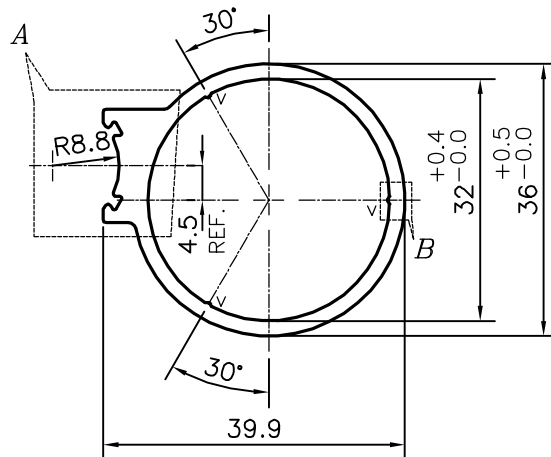


P-13508

X1757

28244



DETAIL OF "B"
SCALE 3:1
(3 PLACES)

V = VEE GROOVE (3 PLACES)
X = RADIUS 0.25 mm. (8 PLACES)

ISSUE (2) :-
3 RIBS ARE REMOVED.

TOLERANCES ON OVERALL WIDTHS & WIDTHS ACROSS FLATS OF BARS, & REGULAR SECTIONS

| | | | |
|---------------------|----------------------|----------------------|---|
| UPTO 6.40mm - ±0.20 | UPTO 32.0mm - ±0.38 | UPTO 120.0mm - ±0.85 | 1. STRAIGHTNESS=1.7mm/M 2. TWIST=1.7mm/M 3. ANGULARITY= ±2° 4. FLATNESS =0.007xWIDTH |
| UPTO 10.0mm - ±0.23 | UPTO 50.0mm - ±0.46 | UPTO 160.0mm - ±1.02 | |
| UPTO 12.0mm - ±0.25 | UPTO 60.0mm - ±0.53 | UPTO 200.0mm - ±1.14 | |
| UPTO 16.0mm - ±0.28 | UPTO 80.0mm - ±0.69 | UPTO 250.0mm - ±1.40 | |
| UPTO 25.0mm - ±0.30 | UPTO 100.0mm - ±0.75 | UPTO 300.0mm - ±1.65 | |



SYMBOL OF QUALITY
AN ISO 9001 COMPANY

JINDAL ALUMINIUM LTD.
BANGALORE-560073 (INDIA)

| | | |
|----------------------|-----------------|------------|
| | NAME | DATE |
| DRAWN | PARVESH | 24-01-2015 |
| CHECKED | | |
| APPROVED | S.S.GARG | 27-01-2015 |
| SCALE | | 1:1 |
| AREA mm ² | | 269.702 |
| PERIMETER mm. | | 131.12 |
| WEIGHT kg/m | | 0.728 |
| DRAWING No. | SECTION No. | |
| P-13508 | - | |
| X1757 | X1757 (ISSUE-2) | |
| 28244 | 28244 | |
| | | |
| | | |

1. ALL DIMENSIONS ARE IN mm.
2. ROUND OFF ALL SHARP CORNERS WITH 0.40 mm.
3. TOLERANCES WILL BE AS PER IS:6477-1983, UNLESS OTHERWISE SPECIFIED

| | |
|---------------------|------------------------------------|
| PARTY'S NAME | YOONWOO AUTOMOTIVE PVT. LTD., PUNE |
| PARTY'S DRAWING No. | AS PER AUTOCAD DRAWING-BKT TOP |
| ALLOY & TEMPER | 6060 T66 |
| DESCRIPTION | AUTOMOBILE SECTION |