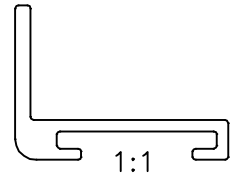


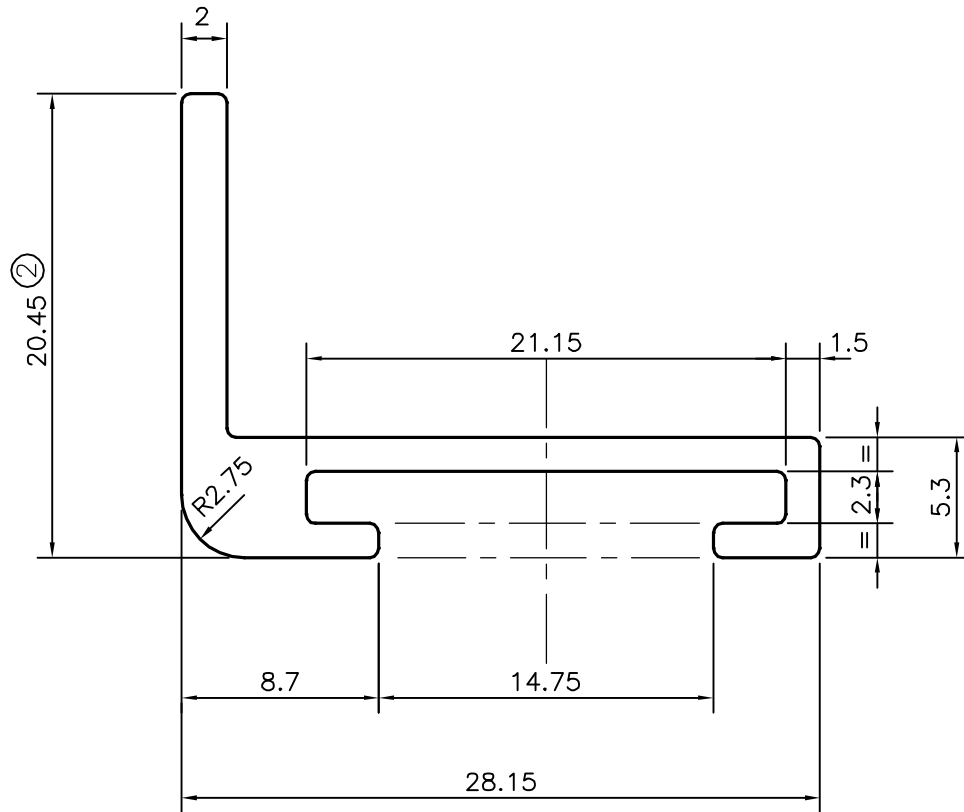
P-15456-1

S4818

28251



1:1

**ISSUE-2**

DIMENSIONS CHANGED FROM 18.3 TO 20.45

WEIGHT ALSO CHANGED FROM 0.277 kg/m TO 0.289 kg/m



SYMBOL OF QUALITY
AN ISO 9002 COMPANY

JINDAL ALUMINIUM LTD.
BANGALORE-560073 (INDIA)

	NAME	DATE
DRAWN	J.P.KAUSHIK	21-03-2016
CHECKED		
APPROVED	S.S.GARG	02-04-2016
SCALE		3:1
AREA mm ²		106.999
PERIMETER mm.		114.188
WEIGHT kg/m		0.289
DRAWING No.		SECTION No.
P-15456-1		-
S4818		S4818(ISSUE-2)
28251		28251

1. ALL DIMENSIONS ARE IN mm.
2. ROUND OFF ALL SHARP CORNERS WITH 0.40 mm.
3. TOLERANCES WILL BE AS PER IS:3965-1981 UNLESS OTHERWISE SPECIFIED

PARTY'S NAME	AEK TEK AUTO ENGINEERING PVT. LTD., LUDHIANA
PARTY'S DRAWING No.	AS PER SAMPLE & REQUIREMENT
ALLOY & TEMPER	6063 T6
DESCRIPTION	MISC. SECTION