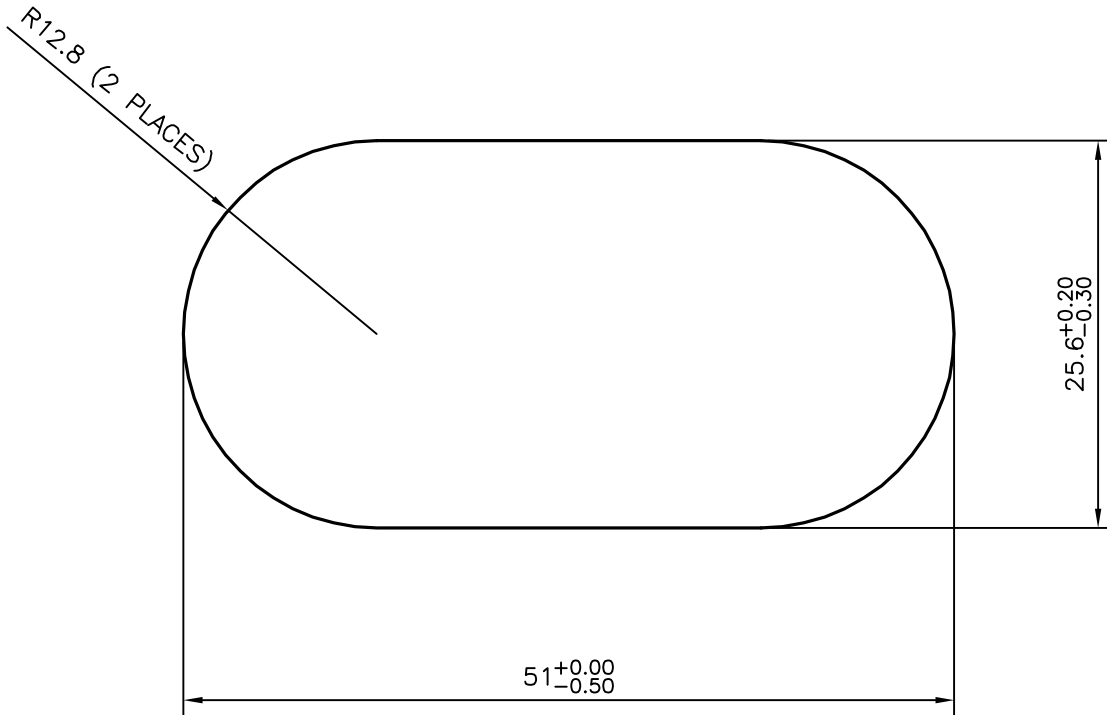
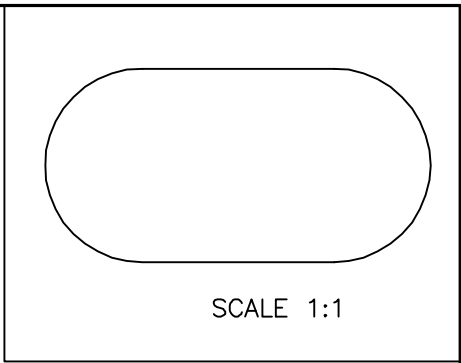



P-16386
S5105
28314



ISSUE-2 :

TOLERANCES CHANGED FROM  $51.0^{+0.0}_{-0.6}$  TO  $51.0^{+0.0}_{-0.5}$  &  
 $25.6^{+0.0}_{-0.5}$  TO  $25.6^{+0.2}_{-0.3}$  AS PER CUSTOMER REQUIREMENT

 SYMBOL OF QUALITY AN ISO 9001 COMPANY	<b>JINDAL ALUMINIUM LTD.</b> BANGALORE-560073 (INDIA)		NAME	DATE
		DRAWN	KIRAN	09-12-2016
1. ALL DIMENSIONS ARE IN mm. 2. ROUND OFF ALL SHARP CORNERS WITH 0.40 mm. 3. TOLERANCES WILL BE AS PER IS:3965-1981, UNLESS OTHERWISE SPECIFIED		CHECKED		
		APPROVED	B.NATARAJ	12-12-2016
PARTY'S NAME GLOBAL AUTOTECH LTD., NOIDA		SCALE		2:1
		AREA mm <sup>2</sup>		1164.959
PARTY'S DRAWING No. TC-EX-022-00		PERIMETER mm.		131.225
		WEIGHT kg/m		3.145
ALLOY & TEMPER 6061 T6		DRAWING No.		P-16386
		SECTION No.		-
DESCRIPTION TUBE CONNECTOR SECTION		S5105		S5105(ISSUE-2)
		28314		28314