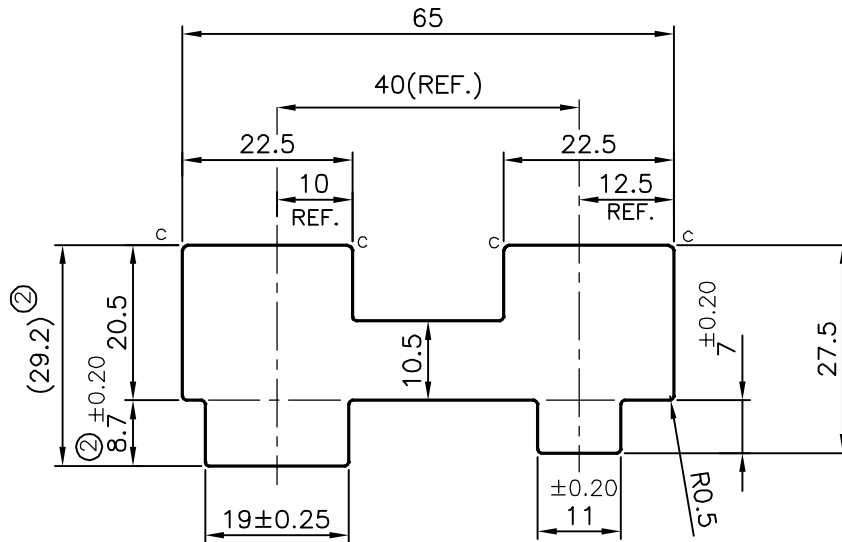


P-17009-1

S5389

28356



ISSUE-2

DIMENSION CHANGED FROM 8.2 TO 8.7 &amp; 28.7 TO 29.2 mm

WEIGHT ALSO CHANGED FROM 3.685 TO 3.710 kg/m

C = CHAMFER 0.5x45° (4 PLACES)

PLEASE SPECIFY THE EXPOSED SURFACE IN THE DRAWING WHEREVER BETTER FINISH REQUIRED.

TOLERANCES ON OVERALL WIDTHS &amp; WIDTHS ACROSS FLATS OF BARS, &amp; REGULAR SECTIONS

UPTO 6.40mm - $\pm 0.20$	UPTO 32.0mm - $\pm 0.38$	UPTO 120.0mm - $\pm 0.85$	UPTO 320.00mm - $\pm 1.70$
UPTO 10.0mm - $\pm 0.23$	UPTO 50.0mm - $\pm 0.46$	UPTO 160.0mm - $\pm 1.02$	
UPTO 12.0mm - $\pm 0.25$	UPTO 60.0mm - $\pm 0.53$	UPTO 200.0mm - $\pm 1.14$	
UPTO 16.0mm - $\pm 0.28$	UPTO 80.0mm - $\pm 0.69$	UPTO 250.0mm - $\pm 1.40$	
UPTO 25.0mm - $\pm 0.30$	UPTO 100.0mm - $\pm 0.75$	UPTO 300.0mm - $\pm 1.65$	



SYMBOL OF QUALITY  
AN ISO 9001 COMPANY

**JINDAL ALUMINIUM LTD.**  
BANGALORE-560073 (INDIA)

	NAME	DATE
DRAWN	J.P.KAUSHIK	23-09-2017
CHECKED		
APPROVED	B.NATARAJA	28-09-2017

- ALL DIMENSIONS ARE IN mm.
- ROUND OFF ALL SHARP CORNERS WITH 0.50 mm.
- TOLERANCES WILL BE AS PER IS:3965-1981 UNLESS OTHERWISE SPECIFIED

SCALE	1:1
AREA mm <sup>2</sup>	1374.257
PERIMETER mm.	218.481
WEIGHT kg/m	3.710

PARTY'S NAME	GLOBAL AUTOTECH LTD., NOIDA	DRAWING No.	P-17009-1	SECTION No.	-
PARTY'S DRAWING No.	TC-EX-336 & AS PER REQUIREMENT	S5389	28356	S5389(ISSUE-2)	28356
ALLOY & TEMPER	65032 WP				
DESCRIPTION	MISC. SECTION				