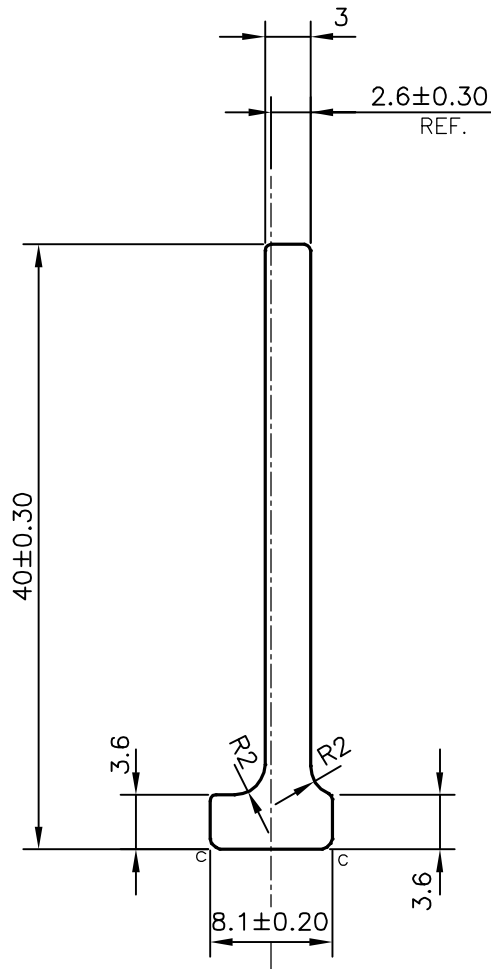


P-15647-1

S4894

28363

1:1



C = CHAMFER 0.5x45° (2 PLACES)



SYMBOL OF QUALITY  
AN ISO 9001 COMPANY

**JINDAL ALUMINIUM LTD.**  
BANGALORE-560073 (INDIA)

	NAME	DATE
DRAWN	PARVESH	09-03-2016
CHECKED		
APPROVED	S.S. GARG	04-04-2016
SCALE		2:1
AREA mm <sup>2</sup>		139.571
PERIMETER mm.		93.311
WEIGHT kg/m		0.377
DRAWING No.	SECTION No.	
P-15647-1	-	
S4894	S4894	
28363	28363	

1. ALL DIMENSIONS ARE IN mm.
2. ROUND OFF ALL SHARP CORNERS WITH 0.40 mm.
3. TOLERANCES WILL BE AS PER IS:3965-1981, UNLESS OTHERWISE SPECIFIED

PARTY'S NAME	GLOBAL AUTOTECH LTD., NOIDA
PARTY'S DRAWING No.	TC-EX-325-00
ALLOY & TEMPER	DA3103BD 'M'
DESCRIPTION	BRACKET.CONDENSER SECTION