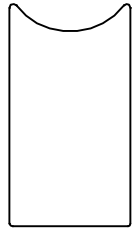


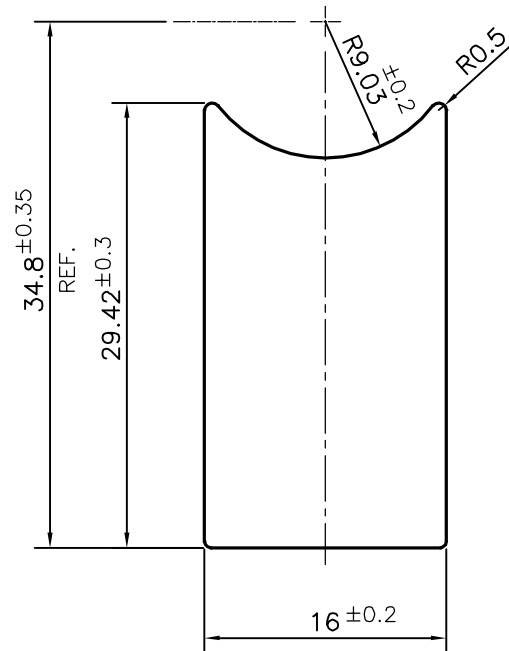
P-15676

S4903

28365



SCALE: - 1:1



SYMBOL OF QUALITY  
AN ISO 9001 COMPANY

**JINDAL ALUMINIUM LTD.**  
BANGALORE-560073 (INDIA)

	NAME	DATE
DRAWN	PARVESH	17-03-2016
CHECKED		
APPROVED	S.S. GARG	11-04-2016
SCALE		2:1
AREA mm <sup>2</sup>		433.504
PERIMETER mm.		92.335
WEIGHT kg/m		1.170
DRAWING No.	SECTION No.	
P-15676	-	
S4903	S4903	
28365	28365	

1. ALL DIMENSIONS ARE IN mm.
2. ROUND OFF ALL SHARP CORNERS WITH 0.40 mm.
3. TOLERANCES WILL BE AS PER IS:3965-1981 , UNLESS OTHERWISE SPECIFIED

PARTY'S NAME GLOBAL AUTOTECH LTD., NOIDA

PARTY'S DRAWING No. TC-EX-319-00

ALLOY & TEMPER DA3103BD 'O'

DESCRIPTION AUTOMOBILE SECTION