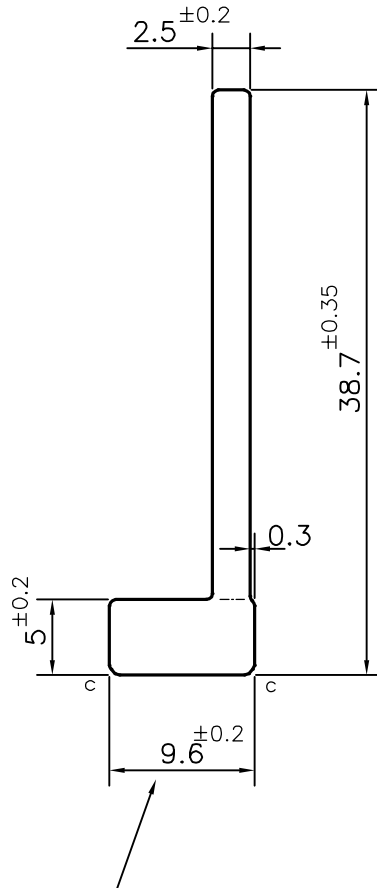
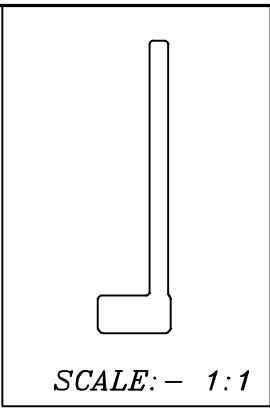



P-15679-1
S4911
28366



☞ DIMENSION CHANGED FROM 9.4 TO 9.6 mm.
AS PER CUSTOMER E-MAIL DATED 16-04-2016.

C = CHAMFER 0.5x45° (2 PLACES)

 SYMBOL OF QUALITY AN ISO 9001 COMPANY	JINDAL ALUMINIUM LTD. BANGALORE-560073 (INDIA)	DRAWN	NAME	DATE
		CHECKED	PARVESH	25-03-2016
1. ALL DIMENSIONS ARE IN mm. 2. ROUND OFF ALL SHARP CORNERS WITH 0.40 mm. 3. TOLERANCES WILL BE AS PER IS:3965-1981 , UNLESS OTHERWISE SPECIFIED		APPROVED	S.S. GARG	16-04-2016
		SCALE		2:1
PARTY'S NAME GLOBAL AUTOTECH LTD., NOIDA		AREA mm ²		131.891
		PERIMETER mm.		95.051
PARTY'S DRAWING No. TC-EX-322-00		WEIGHT kg/m		0.356
		DRAWING No.	SECTION No.	
ALLOY & TEMPER DA3103BD 'O'		P-15679-1		-
		S4911		S4911
DESCRIPTION AUTOMOBILE SECTION		28366		28366