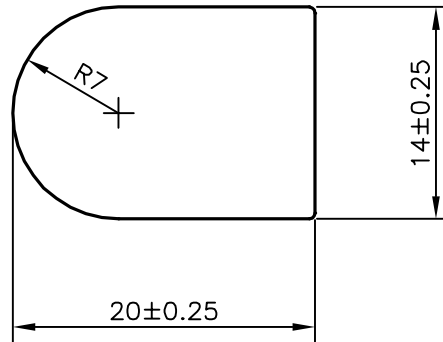
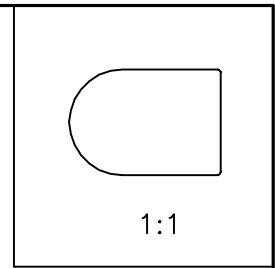



P-15820
S4926
28377



 SYMBOL OF QUALITY AN ISO 9001 COMPANY	JINDAL ALUMINIUM LTD. BANGALORE-560073 (INDIA)		NAME	DATE
		DRAWN	J.P.KAUSHIK	02-05-2016
1. ALL DIMENSIONS ARE IN mm. 2. ROUND OFF ALL SHARP CORNERS WITH 0.40 mm. 3. TOLERANCES WILL BE AS PER IS:3965-1981 UNLESS OTHERWISE SPECIFIED		CHECKED		
		APPROVED	S.S. GARG	04-05-2016
PARTY'S NAME YOONWOO AUTOMOTIVE INDIA PVT. LTD., PUNE		SCALE		2:1
		AREA mm ²		258.9
ISSUE No. AS PER DRAWING		PERIMETER mm.		61.648
		WEIGHT kg/m		0.699
ALLOY & TEMPER 6061 T6		DRAWING No.	SECTION No.	
		P-15820	-	
DESCRIPTION W201 LIQUID CHARGE PORT CONNECTOR		S4926	S4926	
		28377	28377	