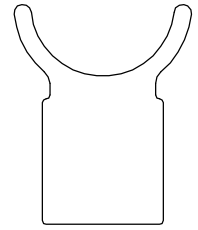


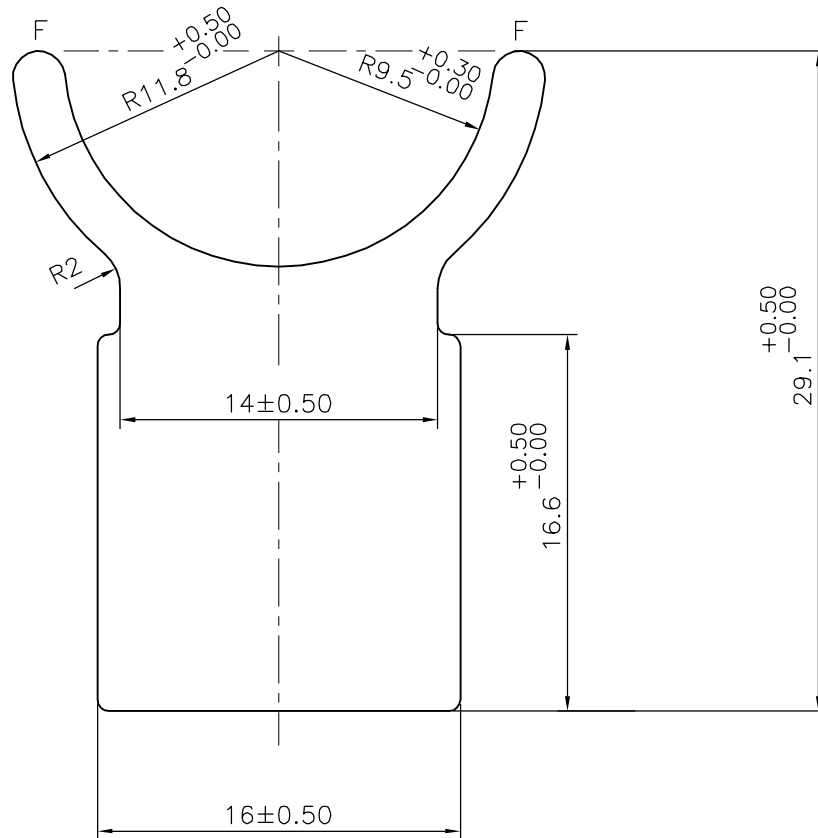
P-16829

S5343

28436



1:1



F = FULL RADIUS (2 PLACES)

TOLERANCES ON OVERALL WIDTHS & WIDTHS ACROSS FLATS OF BARS, & REGULAR SECTIONS

UPTO 6.40mm - ±0.20
 UPTO 10.0mm - ±0.23
 UPTO 12.0mm - ±0.25
 UPTO 16.0mm - ±0.28
 UPTO 25.0mm - ±0.30

UPTO 32.0mm - ±0.38
 UPTO 50.0mm - ±0.46
 UPTO 60.0mm - ±0.53
 UPTO 80.0mm - ±0.69
 UPTO 100.0mm - ±0.75

UPTO 120.0mm - ±0.85
 UPTO 160.0mm - ±1.02
 UPTO 200.0mm - ±1.14
 UPTO 250.0mm - ±1.40
 UPTO 300.0mm - ±1.65

1. STRAIGHTNESS=1.7mm/M
 2. TWIST=1.7mm/M
 3. ANGULARITY= ±2°
 4. FLATNESS =0.006xWIDTH



SYMBOL OF QUALITY
 AN ISO 9001 COMPANY

JINDAL ALUMINIUM LTD.
 BANGALORE-560073 (INDIA)

	NAME	DATE
DRAWN	J.P.KAUSHIK	20-02-2017
CHECKED		
APPROVED	B.NATARAJ	01-04-2017

- ALL DIMENSIONS ARE IN mm.
- ROUND OFF ALL SHARP CORNERS WITH 0.50 mm.
- TOLERANCES WILL BE AS PER IS:3965-1981 UNLESS OTHERWISE SPECIFIED

SCALE 3:1

AREA mm² 361.629

PERIMETER mm. 110.197

WEIGHT kg/m 0.976

DRAWING No. SECTION No.

PARTY'S NAME PYN PRECISION COMPONENTS, FARIDABAD

PARTY'S DRAWING No. AS PER DRAWING-OUTLET FLANGE-'B-A'

ALLOY & TEMPER 6005 T5

DESCRIPTION OUTLET FLANGE SECTION

P-16829

S5343

28436

-

S5343

28436