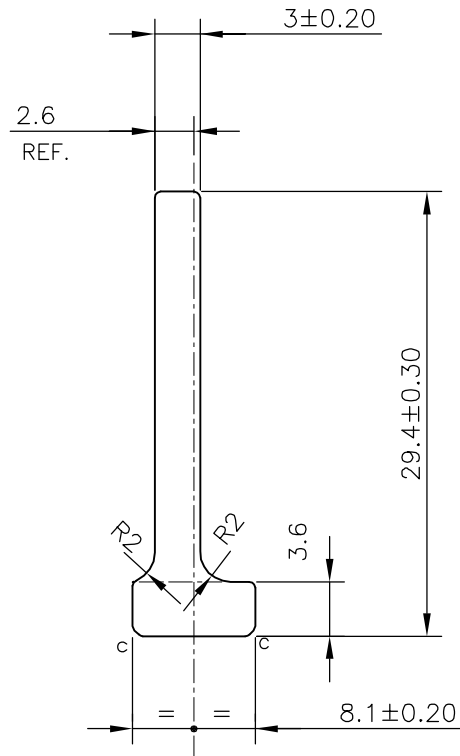
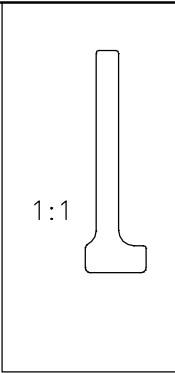



P-16899
S5341
28440



C = CHAMFER 0.5x45° (2 PLACES)

TOLERANCES ON OVERALL WIDTHS & WIDTHS ACROSS FLATS OF BARS, & REGULAR SECTIONS

UPTO 6.40mm - ±0.20	UPTO 32.0mm - ±0.38	UPTO 120.0mm - ±0.85	UPTO 320.00mm - ±1.70
UPTO 10.0mm - ±0.23	UPTO 50.0mm - ±0.46	UPTO 160.0mm - ±1.02	
UPTO 12.0mm - ±0.25	UPTO 60.0mm - ±0.53	UPTO 200.0mm - ±1.14	
UPTO 16.0mm - ±0.28	UPTO 80.0mm - ±0.69	UPTO 250.0mm - ±1.40	
UPTO 25.0mm - ±0.30	UPTO 100.0mm - ±0.75	UPTO 300.0mm - ±1.65	

 SYMBOL OF QUALITY AN ISO 9001 COMPANY	JINDAL ALUMINIUM LTD. BANGALORE-560073 (INDIA)	DRAWN	J.P.KAUSHIK	DATE	20-03-2017
		CHECKED			
		APPROVED	B.NATARAJ	DATE	01-04-2017
1. ALL DIMENSIONS ARE IN mm. 2. ROUND OFF ALL SHARP CORNERS WITH 0.40 mm. 3. TOLERANCES WILL BE AS PER IS:3965-1981, UNLESS OTHERWISE SPECIFIED		SCALE		2:1	
		AREA mm ²		107.771	
		PERIMETER mm.		72.111	
		WEIGHT kg/m		0.291	
		DRAWING No.		SECTION No.	
PARTY'S NAME		SWASTIKA AUTOMATICS, FARIDABAD		P-16899	
PARTY'S DRAWING No.		BRACKET 9610/9620		S5341	
ALLOY & TEMPER		DA3103BD 'O'		28440	
DESCRIPTION		AUTOMOBILE SECTION		28440	