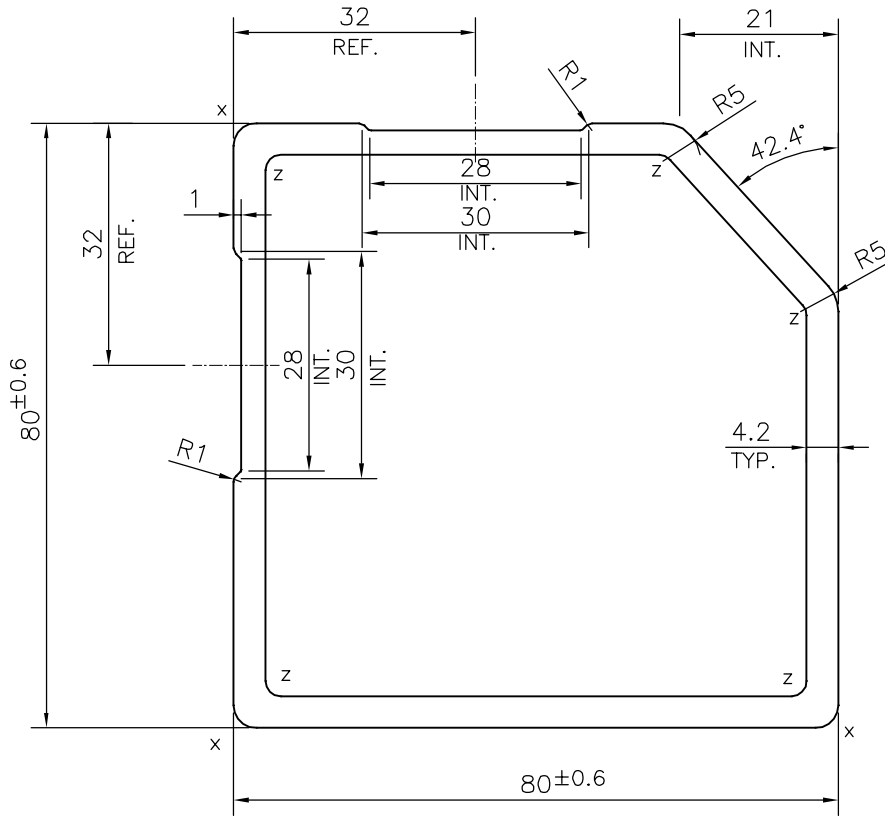



P-15667-1
X1998
28450



Z = RADIUS 2 mm. (5 PLACES)  
X = RADIUS 3 mm. (3 PLACES)

1. STRAIGHTNESS=1.0mm/M
2. TWIST=1.0mm/M
3. ANGULARITY= ±2°
4. FLATNESS =0.007xWIDTH

 SYMBOL OF QUALITY AN ISO 9001 COMPANY	<b>JINDAL ALUMINIUM LTD.</b> BANGALORE-560073 (INDIA)	NAME		DATE
		DRAWN	PARVESH	19-03-2016
		CHECKED		
		APPROVED		S.S. GARG
		SCALE		1:1
		AREA mm <sup>2</sup>		1160.263
		PERIMETER mm.		304.263
		WEIGHT kg/m		3.133
PARTY'S NAME		JARRA CNC PRODUCTS, HOSUR	DRAWING No.	
PARTY'S DRAWING No.		SOL-GR1	SECTION No.	
ALLOY & TEMPER		6063 T5	P-15667-1	-
DESCRIPTION		MISC. SECTION	X1998	X1998
			28450	28450