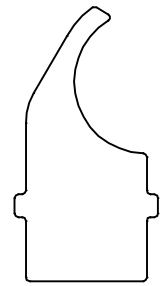


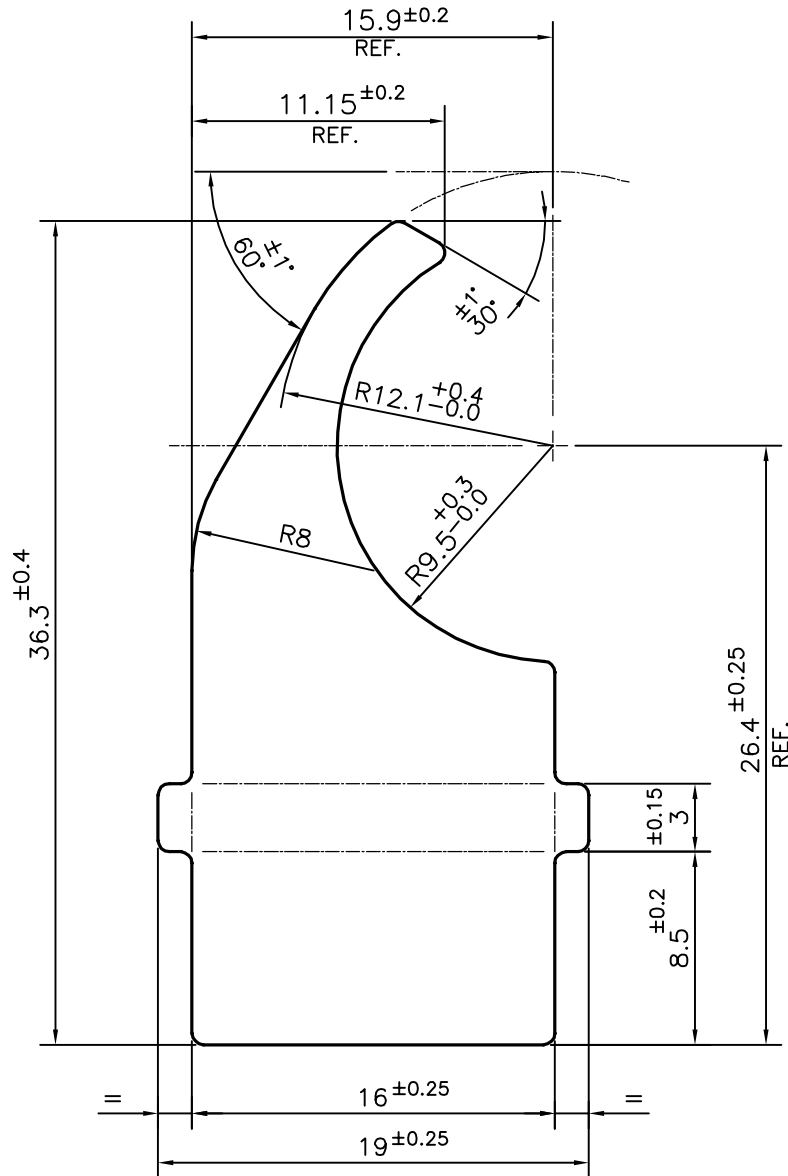
P-17022

S5387

28458



SCALE: - 1:1



TOLERANCES ON OVERALL WIDTHS & WIDTHS ACROSS FLATS OF BARS, & REGULAR SECTIONS

| | | | |
|---------------------|----------------------|----------------------|---|
| UPTO 6.40mm - ±0.20 | UPTO 32.0mm - ±0.38 | UPTO 120.0mm - ±0.85 | 1. STRAIGHTNESS=1.7mm/M 2. TWIST=1.7mm/M 3. ANGULARITY= ±2° 4. FLATNESS =0.007xWIDTH |
| UPTO 10.0mm - ±0.23 | UPTO 50.0mm - ±0.46 | UPTO 160.0mm - ±1.02 | |
| UPTO 12.0mm - ±0.25 | UPTO 60.0mm - ±0.53 | UPTO 200.0mm - ±1.14 | |
| UPTO 16.0mm - ±0.28 | UPTO 80.0mm - ±0.69 | UPTO 250.0mm - ±1.40 | |
| UPTO 25.0mm - ±0.30 | UPTO 100.0mm - ±0.75 | UPTO 300.0mm - ±1.65 | |



SYMBOL OF QUALITY
AN ISO 9001 COMPANY

JINDAL ALUMINIUM LTD.
BANGALORE-560073 (INDIA)

| | NAME | DATE |
|----------------------|-------------|------------|
| DRAWN | PARVESH | 02-05-2017 |
| CHECKED | | |
| APPROVED | B.NATARAJA | 05-05-2017 |
| SCALE | | 3:1 |
| AREA mm ² | | 388.488 |
| PERIMETER mm. | | 103.527 |
| WEIGHT kg/m | | 1.049 |
| DRAWING No. | SECTION No. | |
| P-17022 | - | |
| S5387 | S5387 | |
| 28458 | 28458 | |

1. ALL DIMENSIONS ARE IN mm.
2. ROUND OFF ALL SHARP CORNERS WITH 0.50 mm.
3. TOLERANCES WILL BE AS PER IS:3965-1981 , UNLESS OTHERWISE SPECIFIED

| | |
|---------------------|--|
| PARTY'S NAME | PYN PRECISION COMPONENTS, FARIDABAD |
| PARTY'S DRAWING No. | PH HCC840YHBAA00 |
| ALLOY & TEMPER | 6005 T5 |
| DESCRIPTION | AUTOMOBILE SECTION-OUTLET FLANGE-COND. |