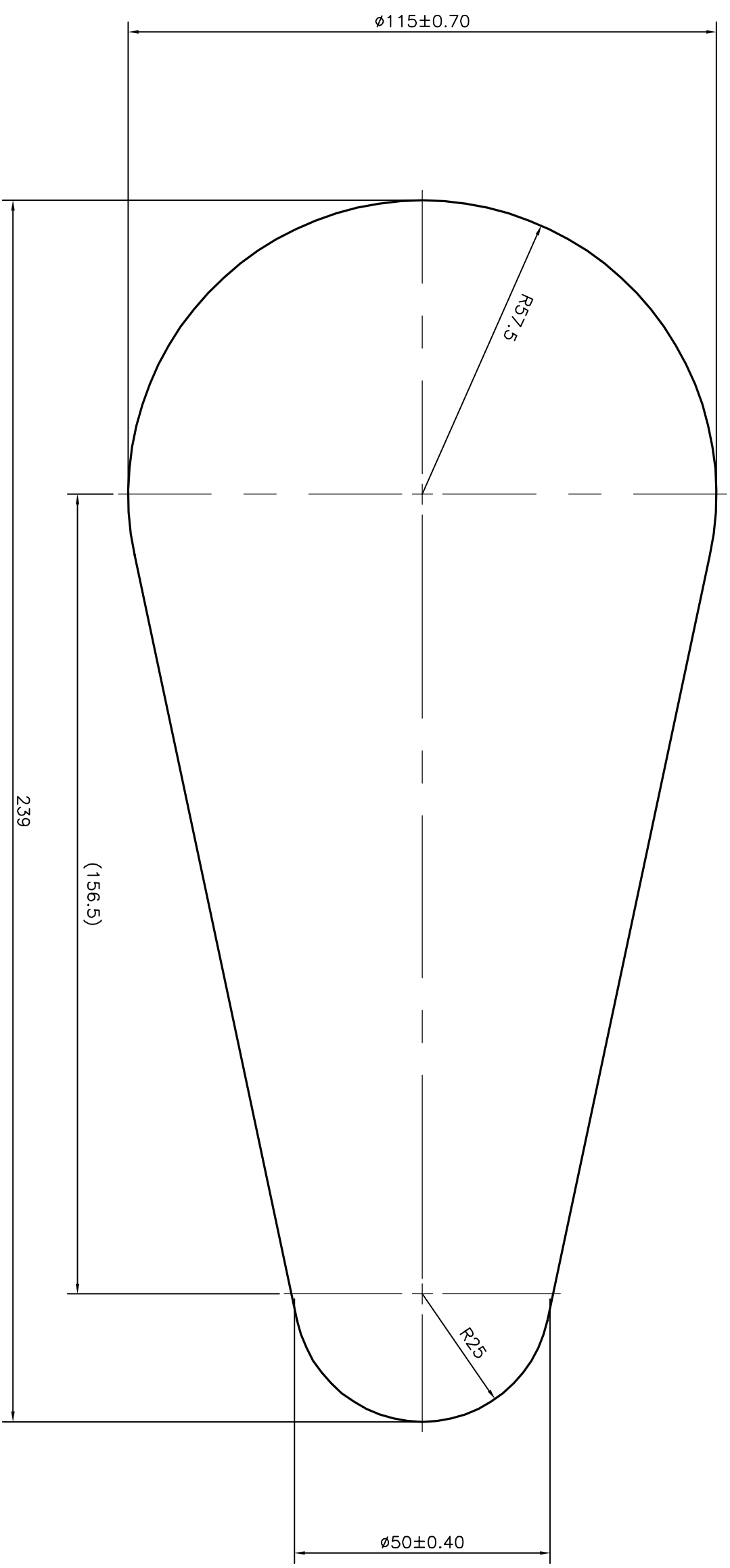


P-17539
S5518
28475



TOLERANCES ON OVERALL WIDTHS & WIDTHS ACROSS FLATS OF BARS, & REGULAR SECTIONS			
UPTO 6.40mm - ±0.20	UPTO 32.0mm - ±0.38	UPTO 120.0mm - ±0.85	UPTO 320.00mm - ±1.70
UPTO 10.0mm - ±0.23	UPTO 50.0mm - ±0.46	UPTO 160.0mm - ±1.02	
UPTO 12.0mm - ±0.25	UPTO 60.0mm - ±0.53	UPTO 200.0mm - ±1.14	
UPTO 16.0mm - ±0.28	UPTO 80.0mm - ±0.69	UPTO 250.0mm - ±1.40	
UPTO 25.0mm - ±0.30	UPTO 100.0mm - ±0.75	UPTO 300.0mm - ±1.65	

 SYMBOL OF QUALITY AN ISO 9001 COMPANY	JINDAL ALUMINIUM LTD. BANGALORE-560073 (INDIA)	
	DRAWN CHECKED APPROVED	NAME J.P.KAUSHIK B.NATARAJA

1. ALL DIMENSIONS ARE IN mm. 2. ROUND OFF ALL SHARP CORNERS WITH 0.40 mm. 3. TOLERANCES WILL BE AS PER:IS:3965-1981 UNLESS OTHERWISE SPECIFIED	SCALE 1:1
--	--------------

PARTY'S NAME	RABWIN INDUSTRIES PVT. LTD., COIMBATORE	WEIGHT kg/m	52.288
PARTY'S DRAWING No.	F70P07Z423	DRAWING No.	P-17539
ALLOY & TEMPER	6082 T6		S5518
DESCRIPTION	CENTRAL LEVER SECTION		28475