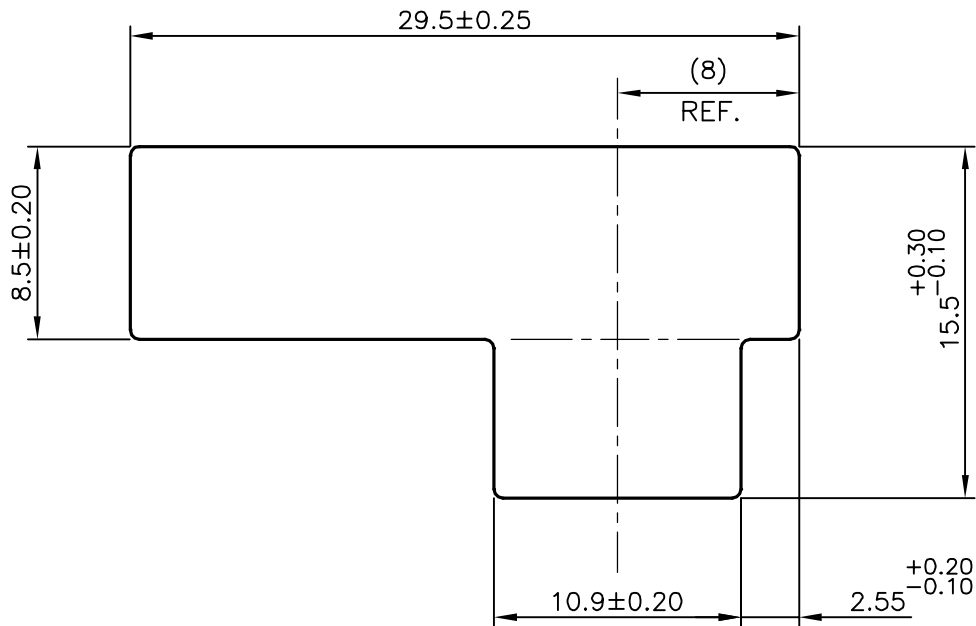


P-17669-1

S5623


28489

SCALE 1:1



## TOLERANCES ON OVERALL WIDTHS &amp; WIDTHS ACROSS FLATS OF BARS, &amp; REGULAR SECTIONS

UPTO 6.40mm - $\pm 0.20$	UPTO 32.0mm - $\pm 0.38$	UPTO 120.0mm - $\pm 0.85$	UPTO 320.00mm - $\pm 1.70$
UPTO 10.0mm - $\pm 0.23$	UPTO 50.0mm - $\pm 0.46$	UPTO 160.0mm - $\pm 1.02$	
UPTO 12.0mm - $\pm 0.25$	UPTO 60.0mm - $\pm 0.53$	UPTO 200.0mm - $\pm 1.14$	
UPTO 16.0mm - $\pm 0.28$	UPTO 80.0mm - $\pm 0.69$	UPTO 250.0mm - $\pm 1.40$	
UPTO 25.0mm - $\pm 0.30$	UPTO 100.0mm - $\pm 0.75$	UPTO 300.0mm - $\pm 1.65$	

 SYMBOL OF QUALITY AN ISO 9001 COMPANY	<b>JINDAL ALUMINIUM LTD.</b> BANGALORE-560073 (INDIA)	DRAWN	J.P.KAUSHIK	DATE	12-12-2017	
		CHECKED				
		APPROVED	B.NATARAJA		25-12-2017	
1. ALL DIMENSIONS ARE IN mm. 2. ROUND OFF ALL SHARP CORNERS WITH 0.40 mm. 3. TOLERANCES WILL BE AS PER IS:3965-1981 UNLESS OTHERWISE SPECIFIED		SCALE		3:1		
		AREA mm <sup>2</sup>		326.913		
		PERIMETER mm.		88.627		
PARTY'S NAME		SUNCHIRIN AUTOPARTS INDIA PVT. LTD., HOSUR		WEIGHT kg/m		0.883
PARTY'S DRAWING No.		AS PER DRAWING		DRAWING No.	SECTION No.	
ALLOY & TEMPER		6061 T6		P-17669-1	-	
DESCRIPTION		AUTOMOBILE SECTION		S5623	S5623	
				28489	28489	