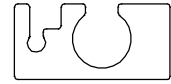
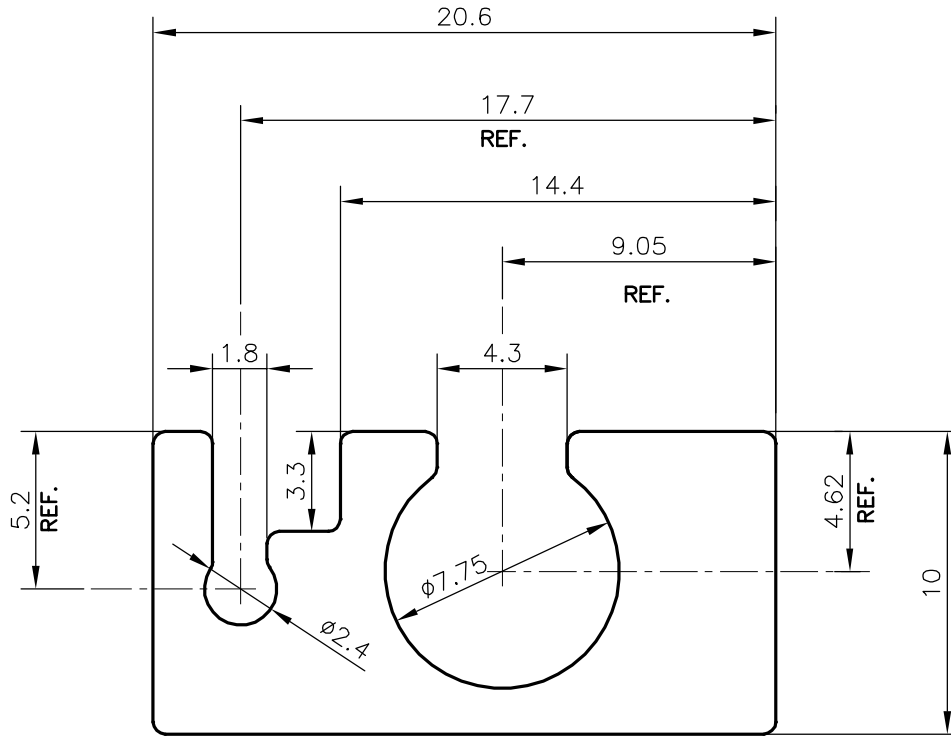


P-21461

28525



SCALE:- 1:1



SCALE:- 4:1

TOLERANCES ON OVERALL WIDTHS & WIDTHS ACROSS FLATS OF BARS, & REGULAR SECTIONS

UPTO 6.40mm - ±0.20	UPTO 32.0mm - ±0.38	UPTO 120.0mm - ±0.85	1. STRAIGHTNESS=1.7mm/M 2. TWIST=1.7mm/M 3. ANGULARITY= ±2° 4. FLATNESS =0.007xWIDTH
UPTO 10.0mm - ±0.23	UPTO 50.0mm - ±0.46	UPTO 160.0mm - ±1.02	
UPTO 12.0mm - ±0.25	UPTO 60.0mm - ±0.53	UPTO 200.0mm - ±1.14	
UPTO 16.0mm - ±0.28	UPTO 80.0mm - ±0.69	UPTO 250.0mm - ±1.40	
UPTO 25.0mm - ±0.30	UPTO 100.0mm - ±0.75	UPTO 300.0mm - ±1.65	



SYMBOL OF QUALITY
AN ISO 9001 COMPANY

JINDAL ALUMINIUM LTD.
BANGALORE-560073 (INDIA)

NAME	DATE
DRAWN	DARPAN

12-09-2020

CHECKED	
APPROVED	B.NATARAJA

19/09/2020

SCALE 4:1

AREA mm² 134.481

PERIMETER mm. 90.197

WEIGHT kg/m 0.363

DRAWING No. SECTION No.

P-21461 -

28525 28525

- ALL DIMENSIONS ARE IN mm.
- ROUND OFF ALL SHARP CORNERS WITH 0.40 mm.
- TOLERANCES WILL BE AS PER IS:3965-1981, UNLESS OTHERWISE SPECIFIED

PARTY'S NAME	JORDAN SAFETY SYSTEMS, CHENNAI
--------------	--------------------------------

PARTY'S DRAWING No.	MODIFIED SECTION OF 27501
---------------------	---------------------------

ALLOY & TEMPER	6063 T6
----------------	---------

DESCRIPTION	INDUSTRIAL SECTION
-------------	--------------------