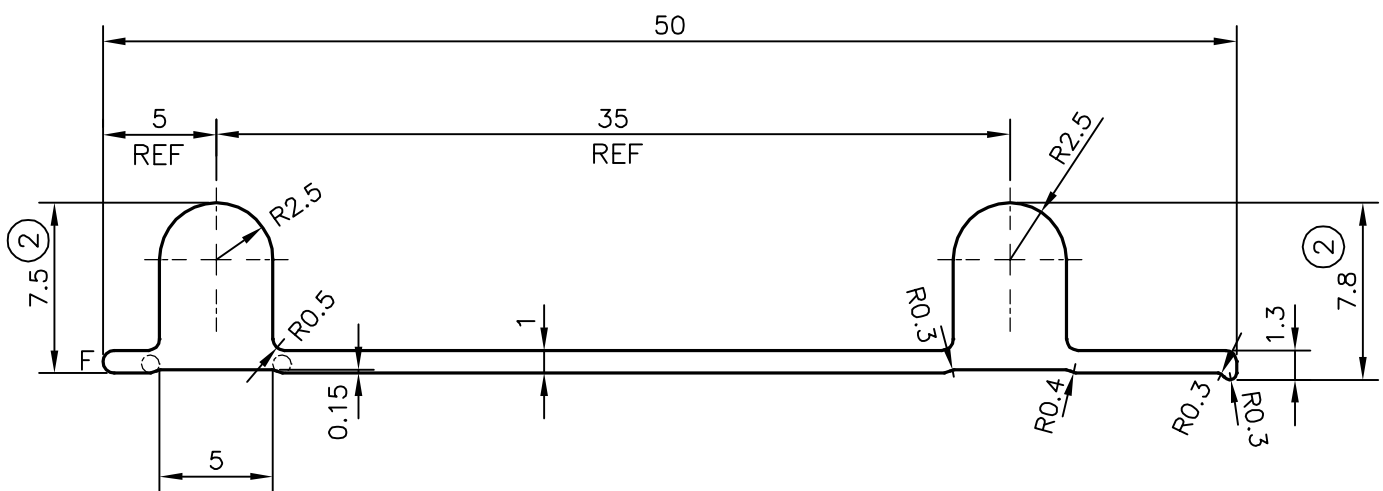
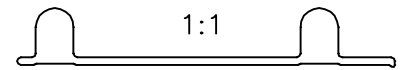


P-18407

S5916

28551



ISSUE-2

DIMENSION CHANGED FROM 5.5 mm TO 7.5 mm & FROM 5.8 TO 7.8 mm

WEIGHT CHANGED FROM 0.238 TO 0.292 kg/m

F = FULL RADIUS (ONE PLACE)

TOLERANCES ON OVERALL WIDTHS & WIDTHS ACROSS FLATS OF BARS, & REGULAR SECTIONS

UPTO 6.40mm - ± 0.20	UPTO 32.0mm - ± 0.38	UPTO 120.0mm - ± 0.85	UPTO 320.00mm - ± 1.70
UPTO 10.0mm - ± 0.23	UPTO 50.0mm - ± 0.46	UPTO 160.0mm - ± 1.02	
UPTO 12.0mm - ± 0.25	UPTO 60.0mm - ± 0.53	UPTO 200.0mm - ± 1.14	
UPTO 16.0mm - ± 0.28	UPTO 80.0mm - ± 0.69	UPTO 250.0mm - ± 1.40	
UPTO 25.0mm - ± 0.30	UPTO 100.0mm - ± 0.75	UPTO 300.0mm - ± 1.65	



SYMBOL OF QUALITY
AN ISO 9001 COMPANY

JINDAL ALUMINIUM LTD.
BANGALORE-560073 (INDIA)

	NAME	DATE
DRAWN	J.P.KAUSHIK	14-09-2018
CHECKED		
APPROVED	B.NATARAJA	18-09-2018

- ALL DIMENSIONS ARE IN mm.
- ROUND OFF ALL SHARP CORNERS WITH 0.40 mm.
- TOLERANCES WILL BE AS PER IS:3965-1981, UNLESS OTHERWISE SPECIFIED

SCALE	3:1
AREA mm ²	108.234
PERIMETER mm.	122.621
WEIGHT kg/m	0.292

PARTY'S NAME	KRISHE MARKCO, HYDERABAD	DRAWING No.	P-18407	SECTION No.	-
PARTY'S DRAWING No.	AS PER SAMPLE & REQUIREMENT		S5916		S5916(ISSUE-2)
ALLOY & TEMPER	6063 T6		28551		28551
DESCRIPTION	MISC. SECTION				