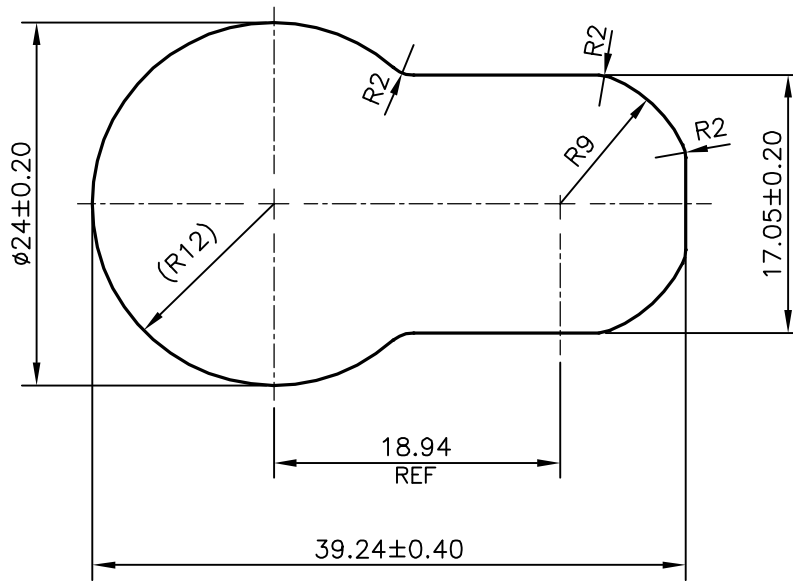
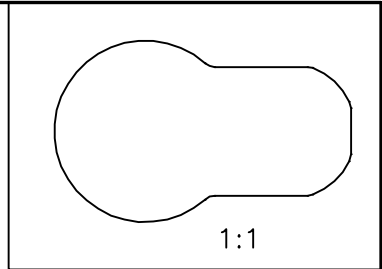


P-18517-1


S5975

28579



TOLERANCES ON OVERALL WIDTHS & WIDTHS ACROSS FLATS OF BARS, & REGULAR SECTIONS

UPTO 6.40mm - ±0.20	UPTO 32.0mm - ±0.38	UPTO 120.0mm - ±0.85	UPTO 320.00mm - ±1.70
UPTO 10.0mm - ±0.23	UPTO 50.0mm - ±0.46	UPTO 160.0mm - ±1.02	
UPTO 12.0mm - ±0.25	UPTO 60.0mm - ±0.53	UPTO 200.0mm - ±1.14	
UPTO 16.0mm - ±0.28	UPTO 80.0mm - ±0.69	UPTO 250.0mm - ±1.40	
UPTO 25.0mm - ±0.30	UPTO 100.0mm - ±0.75	UPTO 300.0mm - ±1.65	

 SYMBOL OF QUALITY AN ISO 9001 COMPANY	<b>JINDAL ALUMINIUM LTD.</b> BANGALORE-560073 (INDIA)	DRAWN	NAME	DATE
		CHECKED	J.P.KAUSHIK	11-08-2018
1. ALL DIMENSIONS ARE IN mm. 2. ROUND OFF ALL SHARP CORNERS WITH 0.40 mm. 3. TOLERANCES WILL BE AS PER IS:3965-1981 , UNLESS OTHERWISE SPECIFIED		APPROVED	B.NATARAJA	03-09-2018
		SCALE		2:1
PARTY'S NAME WONJIN AUTOPARTS INDIA PVT. LTD., CHENNAI		AREA mm <sup>2</sup>		711.77
		PERIMETER mm.		105.221
PARTY'S DRAWING No. AS PER DRAWING		WEIGHT kg/m		1.922
		DRAWING No.		SECTION No.
ALLOY & TEMPER 6061 T6		P-18517-1		-
		S5975		S5975
DESCRIPTION AUTO MOBILE SECTION		28579		28579