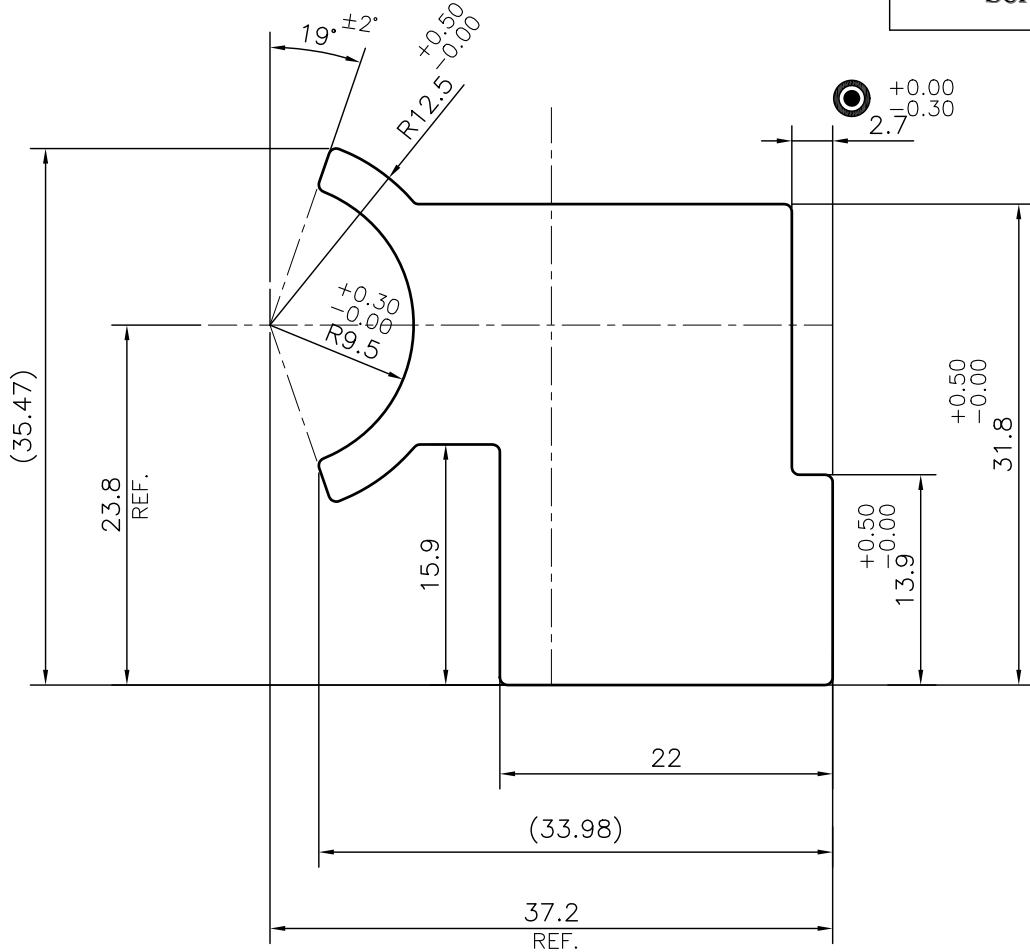
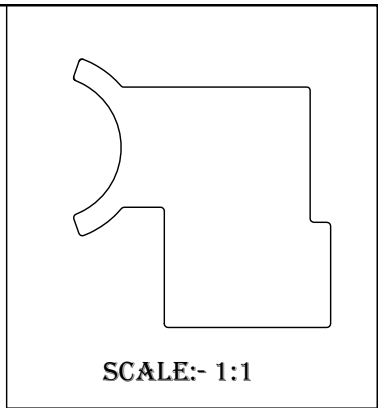


P-21819
G028585



⊙ ISSUE-3 - DIM. CHANGED FROM 3MM TO 2.7MM
 - WEIGHT CHANGED FROM 2.119 TO 2.133 KG/M

DATED
15/11/2022

⚠ ISSUE-2 - CANCELED BY CUSTOMER

DATED
16/08/2022

TOLERANCES ON OVERALL WIDTHS & WIDTHS ACROSS FLATS OF BARS, & REGULAR SECTIONS

UPTO 6.40mm - ± 0.20	UPTO 32.0mm - ± 0.38	UPTO 120.0mm - ± 0.85	1. STRAIGHTNESS=1.7mm/M 2. TWIST=1.7mm/M 3. ANGULARITY= $\pm 2^{\circ}$ 4. FLATNESS = 0.007xWIDTH
UPTO 10.0mm - ± 0.23	UPTO 50.0mm - ± 0.46	UPTO 160.0mm - ± 1.02	
UPTO 12.0mm - ± 0.25	UPTO 60.0mm - ± 0.53	UPTO 200.0mm - ± 1.14	
UPTO 16.0mm - ± 0.28	UPTO 80.0mm - ± 0.69	UPTO 250.0mm - ± 1.40	
UPTO 25.0mm - ± 0.30	UPTO 100.0mm - ± 0.75	UPTO 300.0mm - ± 1.65	

 SYMBOL OF QUALITY AN ISO 9001 COMPANY	JINDAL ALUMINIUM LTD. BANGALORE-560073 (INDIA)	NAME	DATE
		DRAWN	DARPAN
		CHECKED	
		APPROVED	B.NATARAJA
			28-11-2022
1. ALL DIMENSIONS ARE IN mm. 2. ROUND OFF ALL SHARP CORNERS WITH 0.40 mm. 3. TOLERANCES WILL BE AS PER IS:3965-1981 , UNLESS OTHERWISE SPECIFIED		SCALE	2:1
		AREA mm ²	790.039
		PERIMETER mm.	143.903
		WEIGHT kg/m	2.133
		DRAWING No.	SECTION No.
		P-21819	-
		G028585	G028585 (ISSUE-3)
PARTY'S NAME	PYN PRECISION COMPONENTS, FARIDABAD		
PARTY'S DRAWING No.	XL HC839YG8AA-00-00 & AS PER REQUIREMENT		
ALLOY & TEMPER	6005 T5		
DESCRIPTION	INLET FLANGE SECTION		