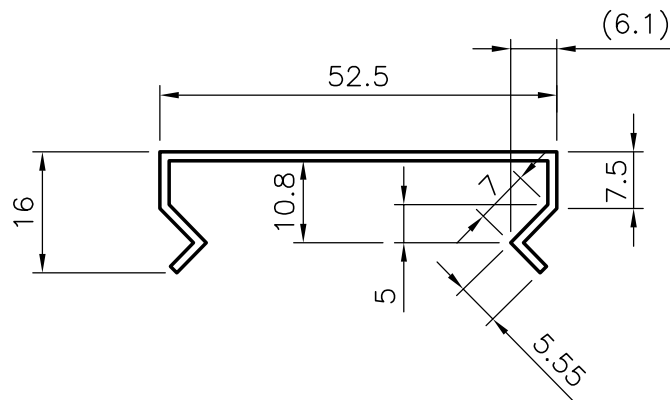
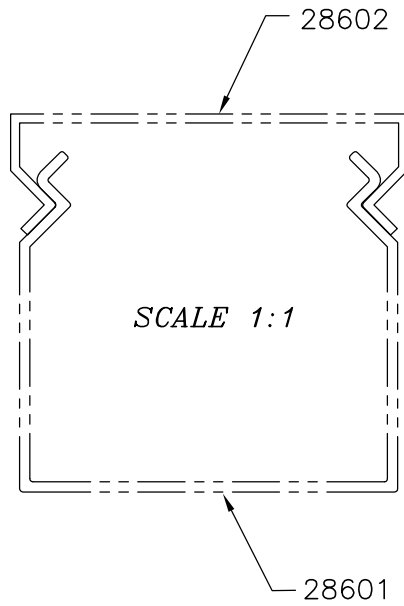



| |
|--------|
| P-3259 |
| S676 |
| 7319 |
| 28602 |

MATCHING SECTION



GENERAL WALL THICKNESS 1.2mm

| | | | | |
|---|--|----------------------|------------|----------|
|  SYMBOL OF QUALITY AN ISO 9002 COMPANY | JINDAL ALUMINIUM LTD. BANGALORE-560073 (INDIA) | | NAME | DATE |
| | | DRAWN | RANGASWAMY | 06-05-01 |
| 1. ALL DIMENSIONS ARE IN mm. 2. ROUND OFF ALL SHARP CORNERS WITH 0.40 mm. 3. TOLERANCES WILL BE AS PER I.S 3965-1981 UNLESS OTHERWISE SPECIFIED | | CHECKED | | |
| | | APPROVED | | |
| | | SCALE | 1:1 | |
| PARTY'S NAME | POWER GEAR LTD BANGALORE | WEIGHT kg/m | 0.284 | |
| PARTY'S DRAWING No. | AS PER YOUR DRAWING (6333469/F) | SECTION No. | 28602 | |
| ALLOY & TEMPER | HE9 WP | DRAWING No. 28602 | | |
| DESCRIPTION | WIRING CHANNEL | | | |