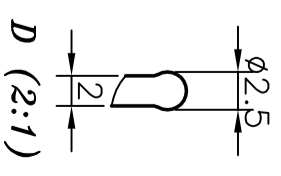
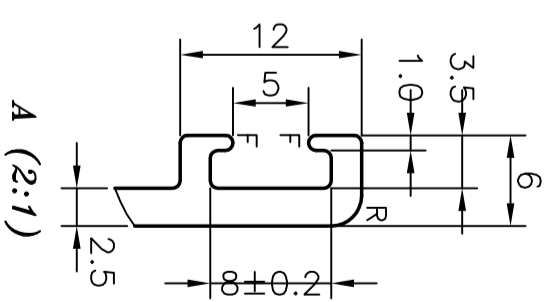
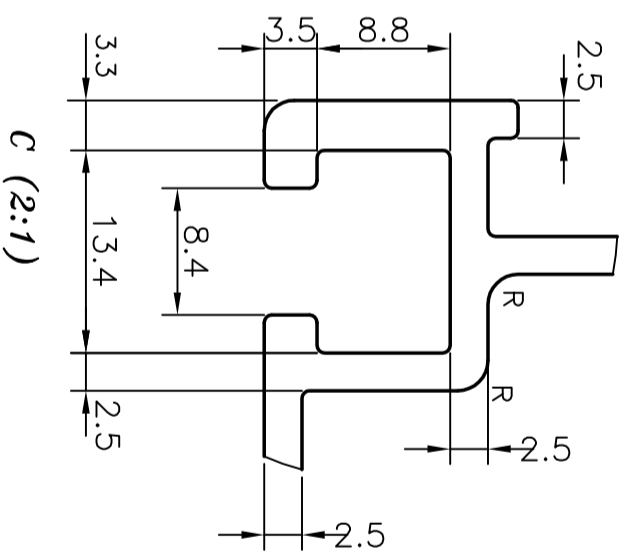
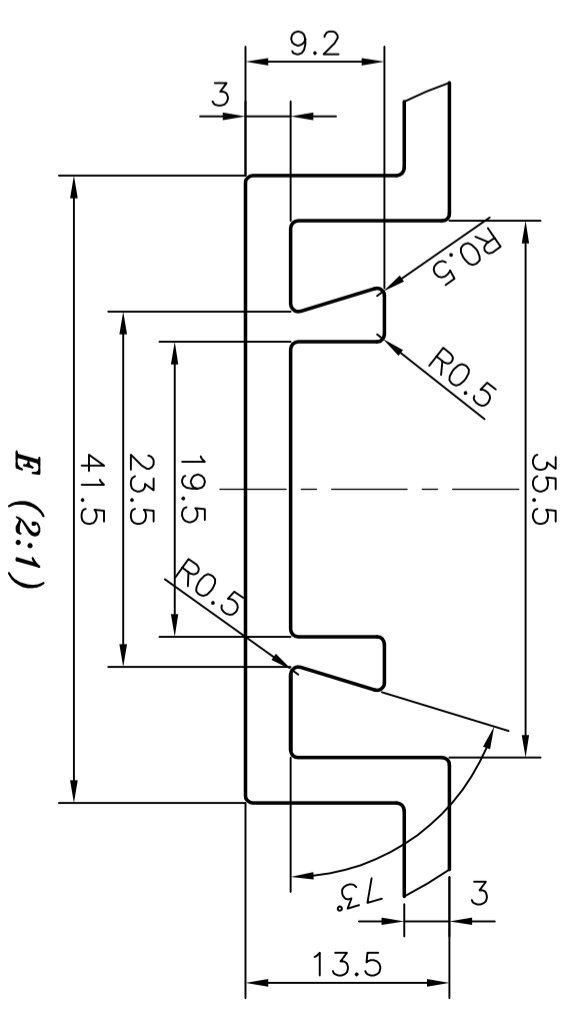
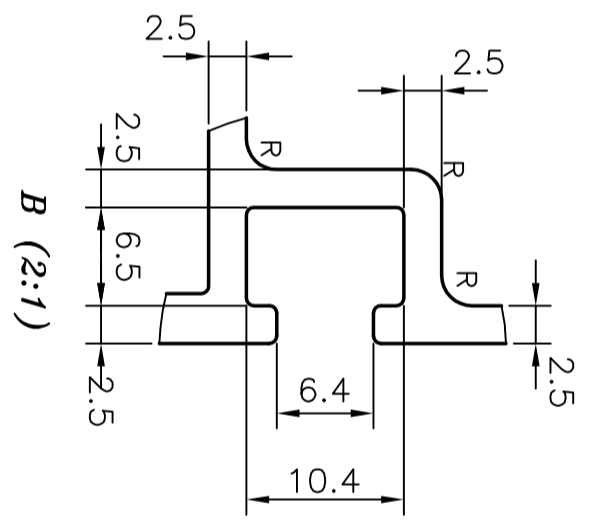



1. ROUND OFF ALL SHARP CORNERS WITH 0.5 mm.
2. R = 2.0 RADIUS (14)
3. F = FULL RADIUS (2)
4. OUT SIDE SURFACE TO BE SMOOTH & FREE FROM DIE LINES
5. PRODUCT SHOULD BE FREE FROM SCRATCHES & BURRS
6. TWIST & BENDS SHOULD BE ≤ 1 mm./M.



 SYMBOL OF QUALITY AN ISO 9002 COMPANY		JINDAL ALUMINIUM LTD. BANGALORE-560073 (INDIA)		NAME	DATE
1. ALL DIMENSIONS ARE IN mm. 2. ROUND OFF ALL SHARP CORNERS WITH 0.40 mm. 3. TOLERANCES WILL BE AS PER IS 6477-1983 UNLESS OTHERWISE SPECIFIED		DRAWN	R.D.Sharma	22-06-02	
PARTY'S NAME		AVASARALA AUTOMATION LTD., BANGALORE		CHECKED	
PARTY'S DRAWING No.		305-08-561-3		APPROVED	
PARTY'S DRAWING No.		305-08-561-3		SCALE	1:1
ALLOY & TEMPER		HE9 WP		AREA mm ²	1436.45
DESCRIPTION		AL. RAIL-DP (HEAVY)		PERIMETER	696.5 mm
				WEIGHT kg/m	3.878
				SECTION No.	28622
				DRAWING No.	28622