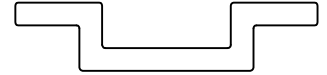


P-7571-3

X764

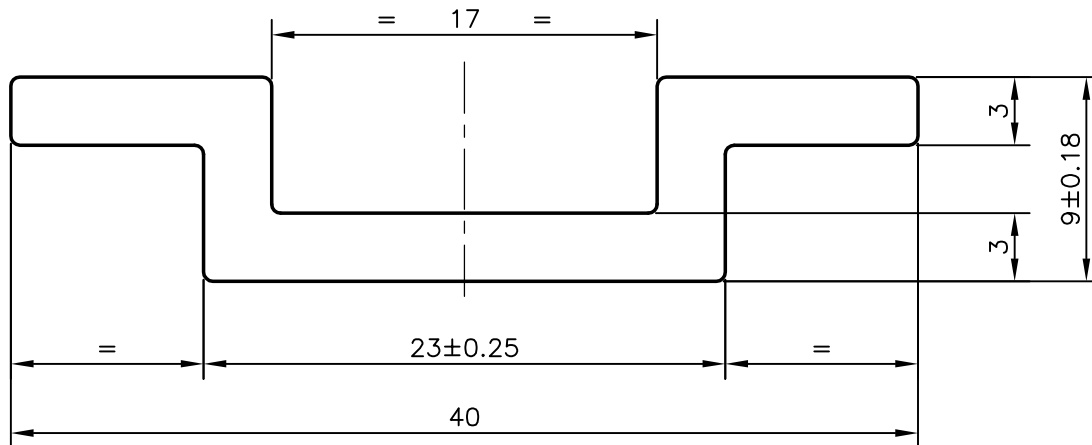
28646

SCALE 1:1



1. MATERIAL :- EN AW 6063 T6
2. TENSILE STRENGTH :-  $215 \text{ N/mm}^2$
3. 0.2% CREEP LIMIT :-  $170 \text{ N/mm}^2$
4. ELONGATION A :- 8%
5. BRINELL HARDNES :- APPROX. 70 HB
6. ANGULARITY TOLERANCE :- 0.4 mm FOR 40 mm
7. STRAIGHTNESS TOLERANCE :- 2.20 mm./4000 mm.
8. FLATNESS TOLERANCE:- 0.30 mm ON 40.0 mm WIDTH
9. PARALLELISM OF TOP & BOTTOM FACE WITHIN 0.5 mm
10. MODULUS OF ELASTICITY =  $70000 \text{ N/mm}^2$
11. MODULUS OF RIGIDITY =  $28000 \text{ N/mm}^2$
12. TWIST = 1mm/METRE

FOR SL.NO. 10. & 11. THIS IS FOR INFORMATION ONLY, CANNOT BE VERIFIED BY TESTING



SYMBOL OF QUALITY  
AN ISO 9001 COMPANY

**JINDAL ALUMINIUM LTD.**  
BANGALORE-560073 (INDIA)

	NAME	DATE
DRAWN	PRASANN.H	18-01-2008
CHECKED		
APPROVED		

1. ALL DIMENSIONS ARE IN mm.
2. ROUND OFF ALL SHARP CORNERS WITH 0.40 mm.
3. TOLERANCES WILL BE AS PER EN12020-2:2001 UNLESS OTHERWISE SPECIFIED

SCALE	3:1
AREA $\text{mm}^2$	155.863
PERIMETER mm.	107.94
WEIGHT kg/m	0.421

PARTY'S NAME	PRECISION AUTOMATION & ROBOTICS INDIA LTD., PUNE	DRAWING No.	P-7571-3	SECTION No.	-
PARTY'S DRAWING No.	EAX52.04003.01	X764	X764		
ALLOY & TEMPER	6063 T6	28646	28646		
DESCRIPTION	MISC. PROFILE				