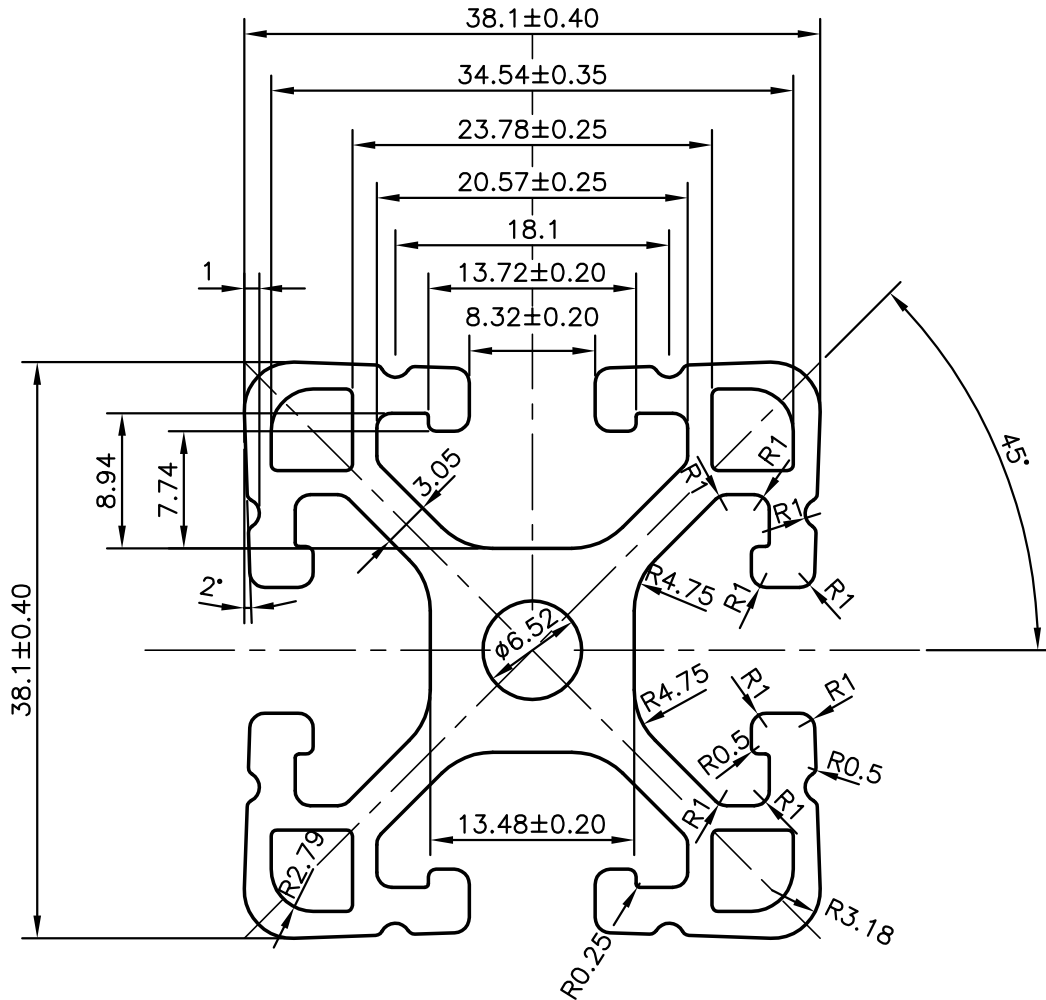
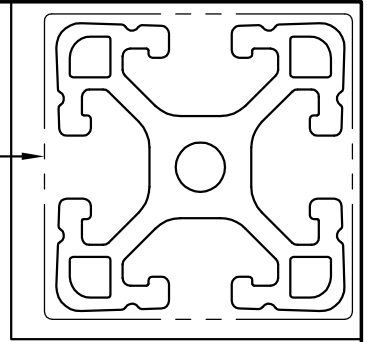


P-9438-1

S2261

28651

EXPOSED SURFACE



- 1 FLATNESS:-  $\pm 0.22$  mm
- 2 TWIST & BAND:- 1.0mm/M
- 3 PART SHOULD BE FREE FROM SCRATCHES & BURRS
- 4 OUTSIDE SURFACE TO BE SMOOTH & FREE FROM DIE LINES



SYMBOL OF QUALITY  
AN ISO 9001 COMPANY

**JINDAL ALUMINIUM LTD.**  
BANGALORE-560073 (INDIA)

	NAME	DATE
DRAWN	J.P.KAUSHIK	24-08-2009
CHECKED		
APPROVED		
SCALE	2:1	
AREA mm <sup>2</sup>	583.15	
PERIMETER mm.	322.594	
WEIGHT kg/m	1.575	
DRAWING No.	SECTION No.	
P-9438-1	-	
S2261	S2261	
28651	28651	

- 1. ALL DIMENSIONS ARE IN mm.
- 2. ROUND OFF ALL SHARP CORNERS WITH 0.40 mm.
- 3. TOLERANCES WILL BE AS PER IS:6477-1983 UNLESS OTHERWISE SPECIFIED

PARTY'S NAME	AVASARALA TECHNOLOGIES LTD., BANGALORE
PARTY'S DRAWING No.	613-23-193-3R2
ALLOY & TEMPER	6063 T6
DESCRIPTION	CONVEYOR SECTION