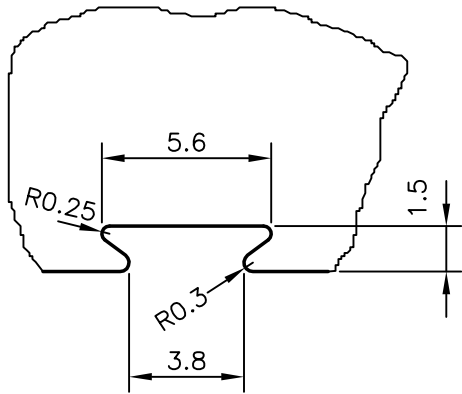
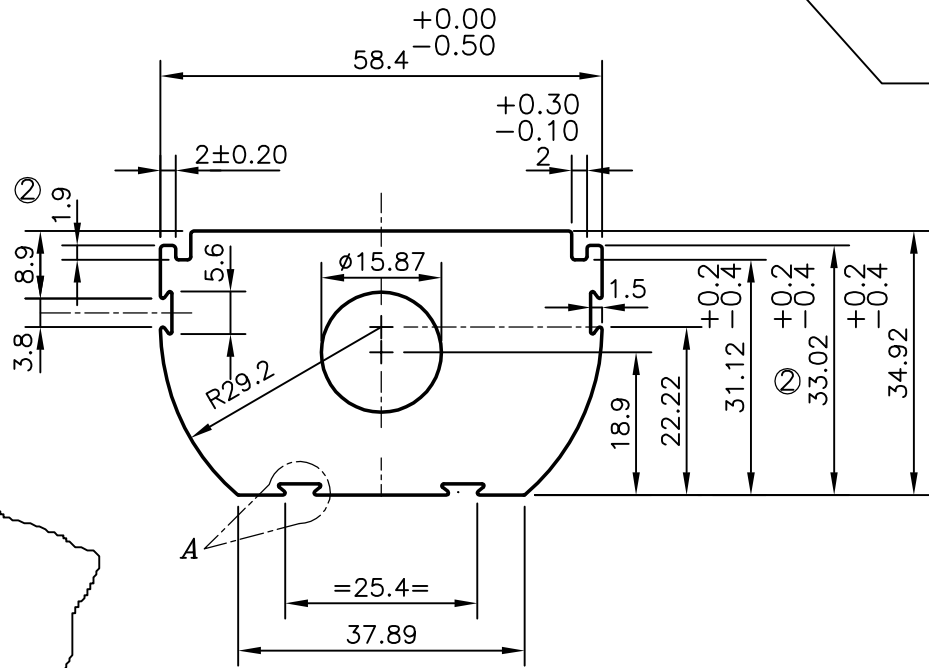
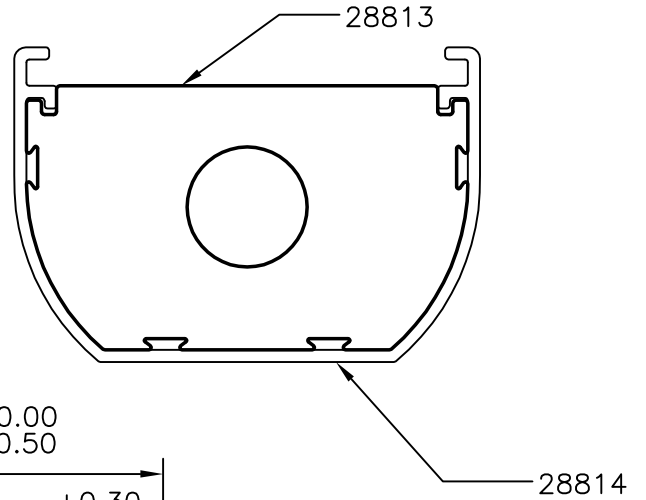



P-6253
28813



SECTION MATCHING WITH 28814

DETAIL: -A

⊙ PLEASE NOTE DIMENSIONS CHANGED 2.2mm TO 1.9 & 33.32 TO 33.02

 SYMBOL OF QUALITY AN ISO 9002 COMPANY	<b>JINDAL ALUMINIUM LTD.</b> BANGALORE-560073 (INDIA)	NAME		DATE
		DRAWN	J.P.KAUSHIK	27-07-2006
1. ALL DIMENSIONS ARE IN mm. 2. ROUND OFF ALL SHARP CORNERS WITH 0.40 mm. 3. TOLERANCES WILL BE AS PER IS:6477-1983 UNLESS OTHERWISE SPECIFIED		CHECKED		
		APPROVED		
PARTY'S NAME PROSOURCE SOLUTIONS INC., CANADA		SCALE		1:1
		AREA mm <sup>2</sup>		1651.367
PARTY'S DRAWING No. TG-20-EXT		PERIMETER mm.		198.642
		WEIGHT kg/m		4.459
ALLOY & TEMPER 6063 T5		DRAWING No.		P-6253
		SECTION No.		-
DESCRIPTION MISC. SECTION		28813		28813 ISSUE-4