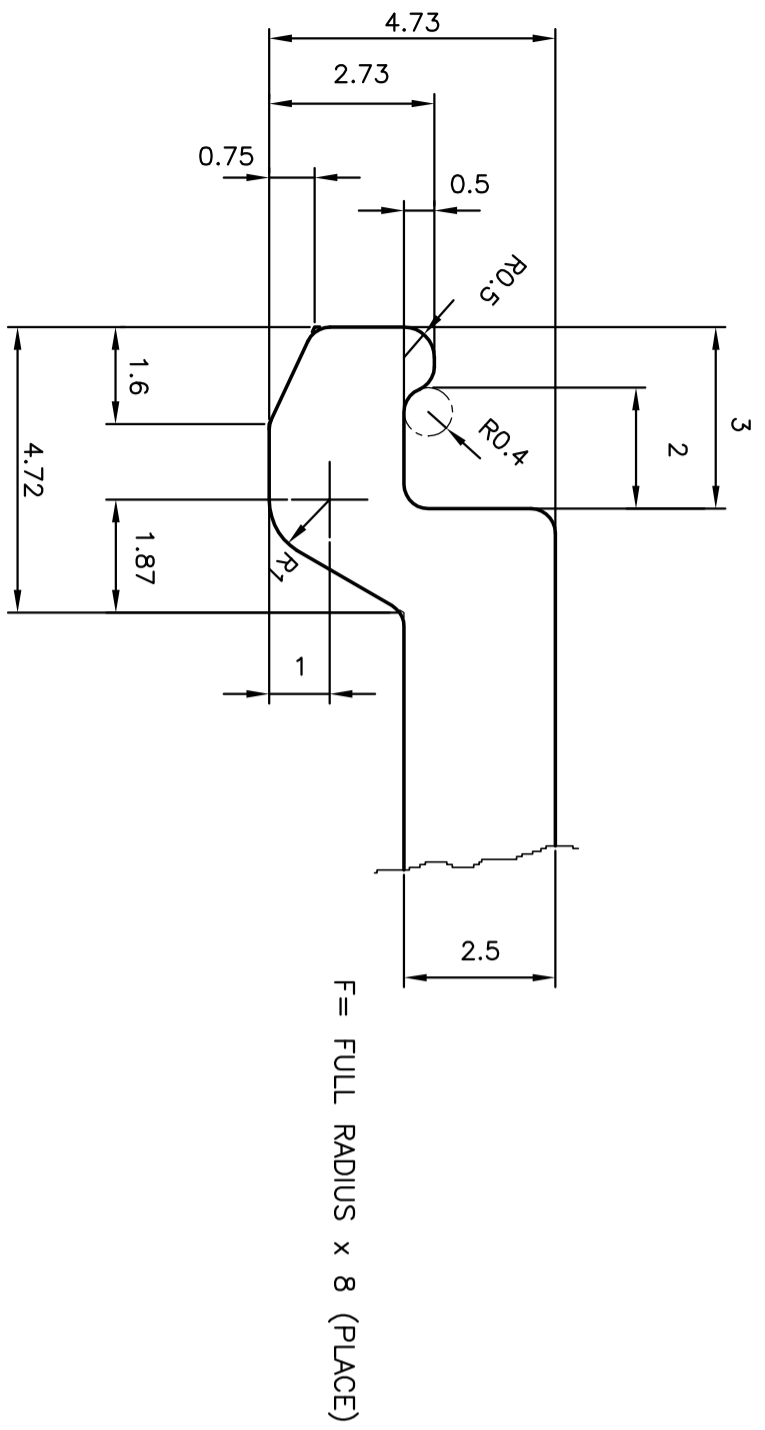
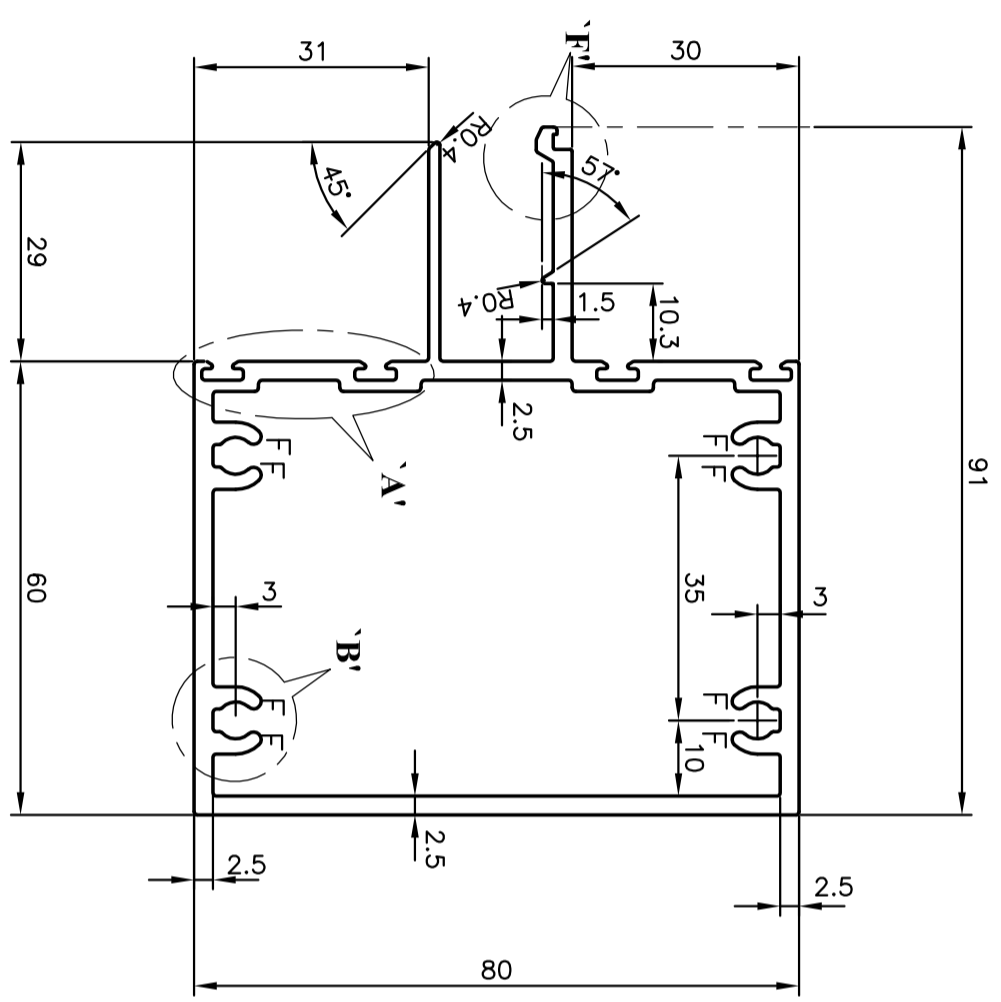
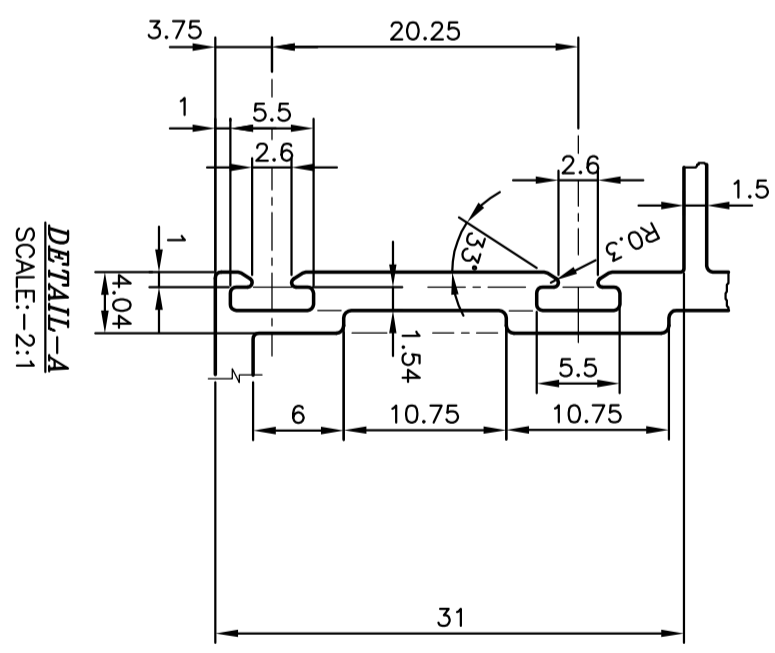
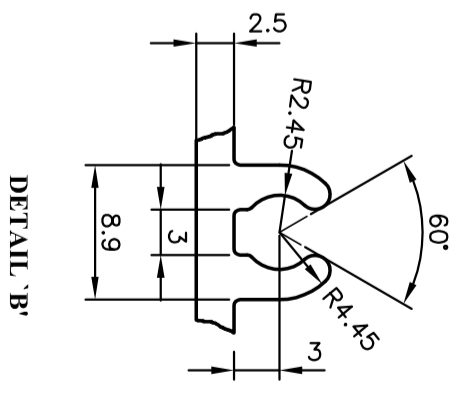


P-6432-1
S1762
28853




F = FULL RADIUS x 8 (PLACE)



DETAIL-A
SCALE:-2:1

DETAIL-F
SCALE:-8:1

| | | | | | | |
|--|--|--|-------------|-------------|--------------|------------|
|  SYMBOL OF QUALITY AN ISO 9001 COMPANY | | JINDAL ALUMINIUM LTD. BANGALORE-560073 (INDIA) | | NAME | DATE | |
| | | | | DRAWN | J.P. KAUSHIK | 01-06-2006 |
| 1. ALL DIMENSIONS ARE IN mm. 2. ROUND OFF ALL SHARP CORNERS WITH 0.40 mm. 3. TOLERANCES WILL BE AS PER IS:6477-1983 UNLESS OTHERWISE SPECIFIED | | SCALE | 1:1 | AREA | 918.936 | |
| PARTY'S NAME | | GWS FABRICATORS PVT.LTD., MUMBAI | PERIMETER | 438.841 | WEIGHT | 2.481 |
| PARTY'S DRAWING No. | | GWS-UTT-115 | DRAWING No. | SECTION No. | | |
| ALLOY & TEMPER | | 6063 T6 | P-6432-1 | - | | |
| DESCRIPTION | | TRANSOM SECTION | S1762 | S1762 | | |
| | | | 28853 | 28853 | | |