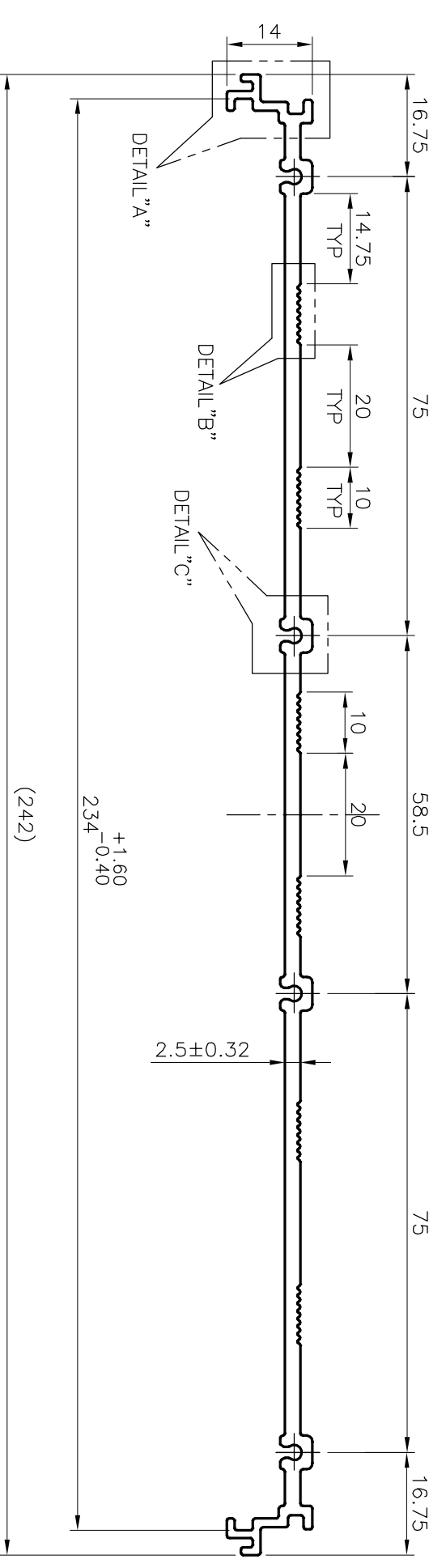
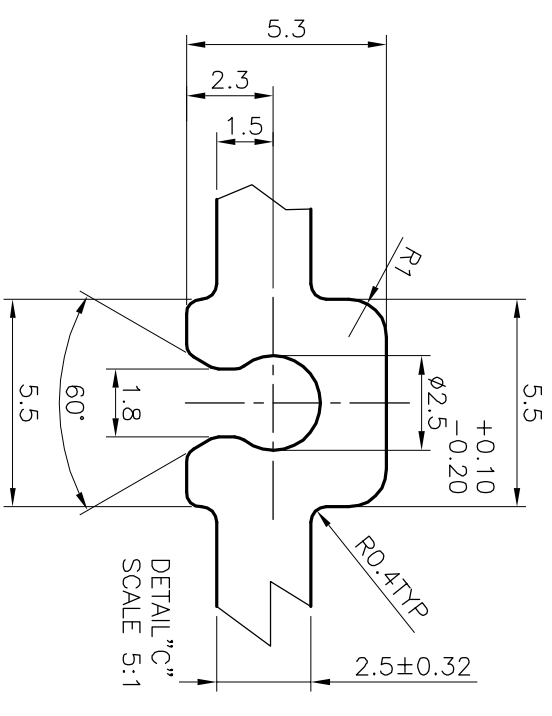
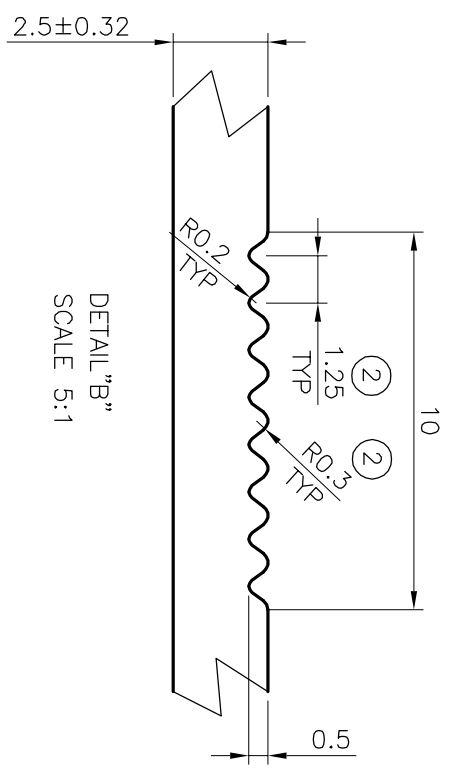
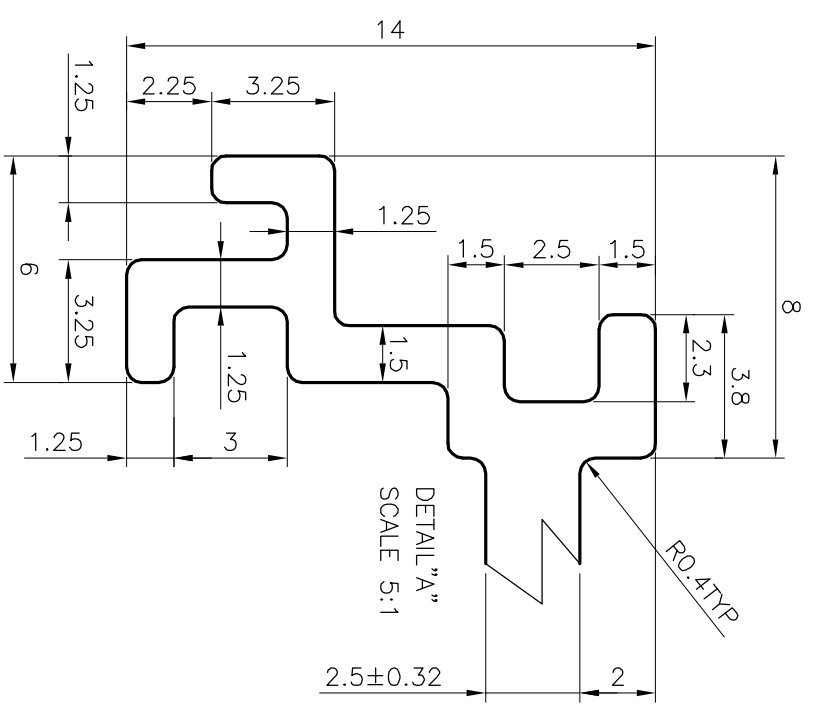



P-5116-1
S1346
28930



TOLERANCE & DIMENSION ADDED ON DIMENSION 234
 $+1.60$
 -0.40
 ON DATED(03/11/2015)

ISSUE-2 SERRATIONS PITCH & RADIUS CHANGED FROM
 1.00mm TO 1.25mm
 R0.25mm TO R0.30mm

 JINDAL ALUMINIUM LTD. BANGALORE-560073 (INDIA)		SYMBOL OF QUALITY AN ISO 9001 COMPANY	
1. ALL DIMENSIONS ARE IN mm. 2. ROUND OFF ALL SHARP CORNERS WITH 0.40 mm. 3. TOLERANCES WILL BE AS PER IS:3965-1981 UNLESS OTHERWISE SPECIFIED		SCALE 1:1	
PARTY'S NAME G.G. TRONICS, BANGALORE		AREA mm ² 655.676	
PARTY'S DRAWING No. AS PER SAMPLE & GR-T4-EXT-J1		PERIMETER mm. 612.735	
ALLOY & TEMPER HE9 WP		WEIGHT kg/m 1.770	
DESCRIPTION ARCHITECTURAL MISC. SECTION		DRAWING No. SECTION No. P-5116-1 - S1346 S1346 28930 28930-ISSUE-2	
		DRAWN RAGHAVENDRA	DATE 05-02-2008
		CHECKED APPROVED	