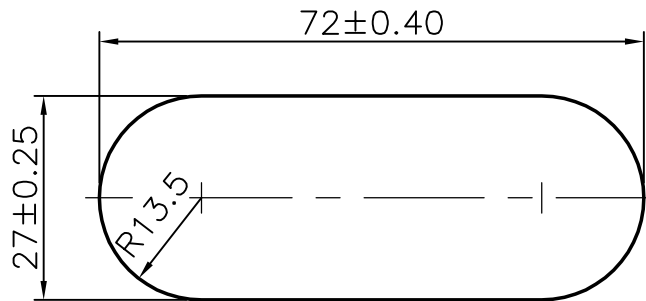


P-5374-2

S1475

28961



SYMBOL OF QUALITY
AN ISO 9001 COMPANY

JINDAL ALUMINIUM LTD.
BANGALORE-560073 (INDIA)

	NAME	DATE
DRAWN	MALINGAPPA	15.04.2005
CHECKED		
APPROVED		

1. ALL DIMENSIONS ARE IN mm.
2. ROUND OFF ALL SHARP CORNERS WITH 0.40 mm.
3. TOLERANCES WILL BE AS PER IS: 3965-1981 UNLESS OTHERWISE SPECIFIED

SCALE	1:1
AREA mm ²	1787.555
PERIMETER mm.	174.82
WEIGHT kg/m	4.826

PARTY'S NAME GLOBAL AUTOTECH PVT. LTD., NOIDA (U.P)

PARTY'S DRAWING No. 646172-3020

ALLOY & TEMPER 65032 WP

DESCRIPTION MISCELLANEOUS BAR

DRAWING No.	SECTION No.
P-5374-2	-
S1475	S1475
28961	28961