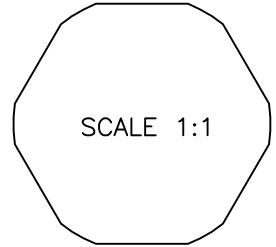


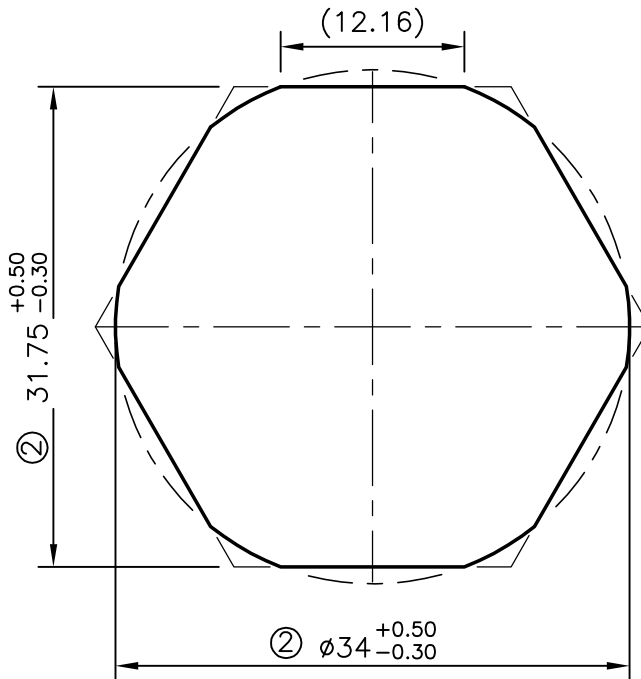
P-6829-2

S1895

28997



UNSPECIFIED CORNER RADIUS WILL BE 0.40mm



ISSUE - ② TOLERANCE CHANGED FROM 34 ± 0.3 TO $\phi 34^{+0.50}_{-0.30}$
 AND 31.75 ± 0.3 TO $31.75^{+0.50}_{-0.30}$ AND OUTER SHAPE ALSO
 CHANGED AS PER CUSTOMER REQUIRMENT



SYMBOL OF QUALITY
AN ISO 9002 COMPANY

JINDAL ALUMINIUM LTD.
BANGALORE-560073 (INDIA)

	NAME	DATE
DRAWN	RAGHAVENDRA	14-06-2007
CHECKED		
APPROVED		
SCALE		2:1
AREA mm ²		852.814
PERIMETER mm.		105.16
WEIGHT kg/m		2.303
DRAWING No.		SECTION No.
P-6829-2		-
S1895		S1895-ISSUE-2
28997		28997

1. ALL DIMENSIONS ARE IN mm.
2. ROUND OFF ALL SHARP CORNERS WITH 0.40 mm.
3. TOLERANCES WILL BE AS PER DIN 17615 UNLESS OTHERWISE SPECIFIED

PARTY'S NAME	BRITISH ENGINES INDIA (P) LTD., BANGALORE
PARTY'S DRAWING No.	AS PER SPECIFICATION
ALLOY & TEMPER	6262 T6
DESCRIPTION	HEXAGONAL BAR