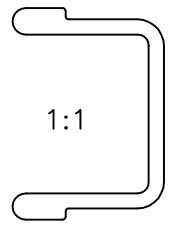


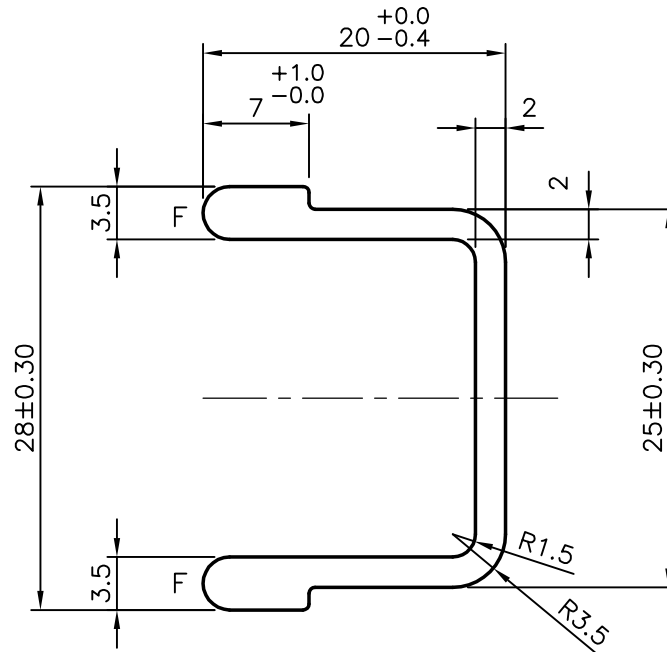
P-5852

X422

29046



1:1



F = FULL RADIUS (2)

UNSPECIFIED TOLERANCES :-  $\pm 0.20$ 

SYMBOL OF QUALITY  
AN ISO 9002 COMPANY

**JINDAL ALUMINIUM LTD.**  
BANGALORE-560073 (INDIA)

	NAME	DATE
DRAWN	MALINGAPPA	03-09-2005
CHECKED		
APPROVED		

1. ALL DIMENSIONS ARE IN mm.
2. ROUND OFF ALL SHARP CORNERS WITH 0.40 mm.
3. TOLERANCES WILL BE AS PER IS:3965-1981 UNLESS OTHERWISE SPECIFIED

SCALE	2:1
AREA mm <sup>2</sup>	136.079
PERIMETER mm.	124.017
WEIGHT kg/m	0.367

PARTY'S NAME	RITTAL INDIA PVT. LTD., BANGALORE
--------------	-----------------------------------

PARTY'S DRAWING No.	N0666500PS24
---------------------	--------------

ALLOY & TEMPER	HE9 WP
----------------	--------

DESCRIPTION	MISCELLANEOUS CHANNEL
-------------	-----------------------

DRAWING No.	SECTION No.
P-5852	-
X422	X422
29046	29046