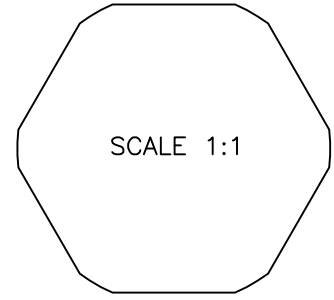


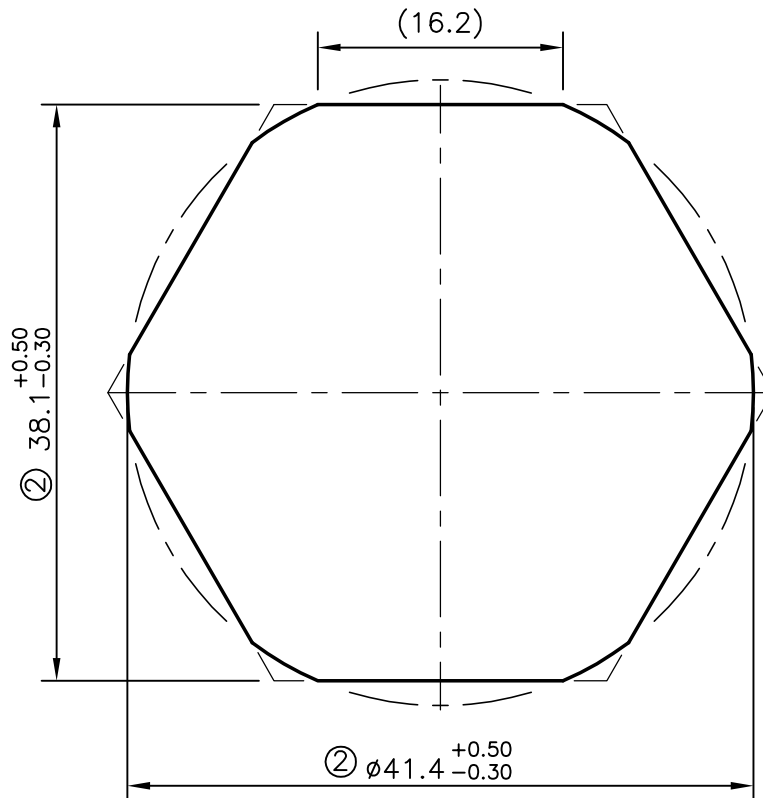
P-6830-2

S1896

29126



UNSPECIFIED CORNER RADIUS WILL BE 0.40mm



ISSUE - ② TOLERANCE CHANGED FROM 41.4 ± 0.3 TO $\phi 41.4 \begin{smallmatrix} +0.50 \\ -0.30 \end{smallmatrix}$
 AND 38.1 ± 0.3 TO $38.1 \begin{smallmatrix} +0.50 \\ -0.30 \end{smallmatrix}$ AND OUTER SHAPE ALSO
 CHANGED AS PER CUSTOMER REQUIRMENT



SYMBOL OF QUALITY
AN ISO 9002 COMPANY

JINDAL ALUMINIUM LTD.
BANGALORE-560073 (INDIA)

	NAME	DATE
DRAWN	RAGHAVENDRA	14-06-2007
CHECKED		
APPROVED		
SCALE		2:1
AREA mm ²		1238.357
PERIMETER mm.		127.395
WEIGHT kg/m		3.344
DRAWING No.	SECTION No.	
P-6830-2	-	
S1896	S1896-ISSUE-2	
29126	29126	

1. ALL DIMENSIONS ARE IN mm.
2. ROUND OFF ALL SHARP CORNERS WITH 0.40 mm.
3. TOLERANCES WILL BE AS PER DIN 17615 UNLESS OTHERWISE SPECIFIED

PARTY'S NAME	BRITISH ENGINES INDIA (P) LTD., BANGALORE
PARTY'S DRAWING No.	AS PER SPECIFICATION
ALLOY & TEMPER	6262 T6