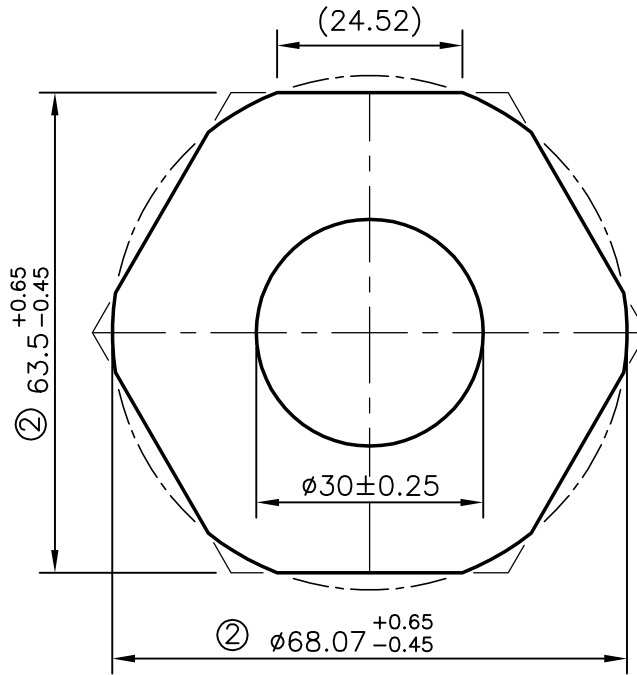


P-6831-2


S1897

29127



ISSUE - ② TOLERANCE CHANGED FROM 68.07 ± 0.45 TO $\phi 68.07^{+0.65}_{-0.45}$
 AND 63.5 ± 0.45 TO $63.5^{+0.65}_{-0.45}$ AND OUTER SHAPE ALSO
 CHANGED AS PER CUSTOMER REQUIRMENT

UNSPECIFIED CORNER RADIUS WILL BE 0.40mm

 SYMBOL OF QUALITY AN ISO 9002 COMPANY	JINDAL ALUMINIUM LTD. BANGALORE-560073 (INDIA)	NAME		DATE
		DRAWN	RAGHAVENDRA	14-06-2007
		CHECKED		
		APPROVED		
1. ALL DIMENSIONS ARE IN mm. 2. ROUND OFF ALL SHARP CORNERS WITH 0.40 mm. 3. TOLERANCES WILL BE AS PER DIN 17615 UNLESS OTHERWISE SPECIFIED		SCALE		1:1
		AREA mm ²		2706.633
		PERIMETER mm.		210.465
PARTY'S NAME		BRITISH ENGINES INDIA (P) LTD., BANGALORE		WEIGHT kg/m
				7.308
PARTY'S DRAWING No.		AS PER SPECIFICATION		DRAWING No.
				P-6831-2
ALLOY & TEMPER		6082 T6		SECTION No.
				S1897
DESCRIPTION		HEXAGONAL TUBE		S1897-ISSUE-2
				29127
				29127