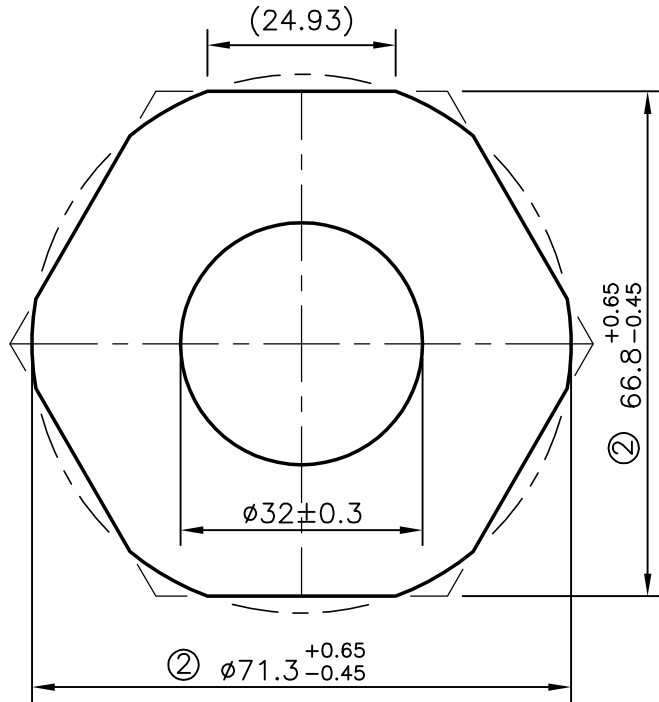


P-6834-2


S1900

29237



ISSUE - ② TOLERANCE CHANGED FROM  $71.3 \pm 0.45$  TO  $\phi 71.3 \begin{smallmatrix} +0.65 \\ -0.45 \end{smallmatrix}$   
 AND  $66.8 \pm 0.45$  TO  $66.8 \begin{smallmatrix} +0.65 \\ -0.45 \end{smallmatrix}$  AND OUTER SHAPE ALSO  
 CHANGED AS PER CUSTOMER REQUIRMENT

UNSPECIFIED CORNER RADIUS WILL BE 0.40mm

 SYMBOL OF QUALITY AN ISO 9002 COMPANY	<b>JINDAL ALUMINIUM LTD.</b> BANGALORE-560073 (INDIA)	NAME		DATE
		DRAWN	RAGHAVENDRA	14-06-2007
		CHECKED		
1. ALL DIMENSIONS ARE IN mm. 2. ROUND OFF ALL SHARP CORNERS WITH 0.40 mm. 3. TOLERANCES WILL BE AS PER DIN 17615 UNLESS OTHERWISE SPECIFIED		APPROVED		
PARTY'S NAME		SCALE		1:1
		AREA mm <sup>2</sup>		2962.658
PARTY'S DRAWING No.		PERIMETER mm.		220.767
		WEIGHT kg/m		7.999
ALLOY & TEMPER		DRAWING No.	SECTION No.	
		P-6834-2	-	
DESCRIPTION		S1900	S1900-ISSUE-2	
		29237	29237	
HEXAGONAL TUBE				