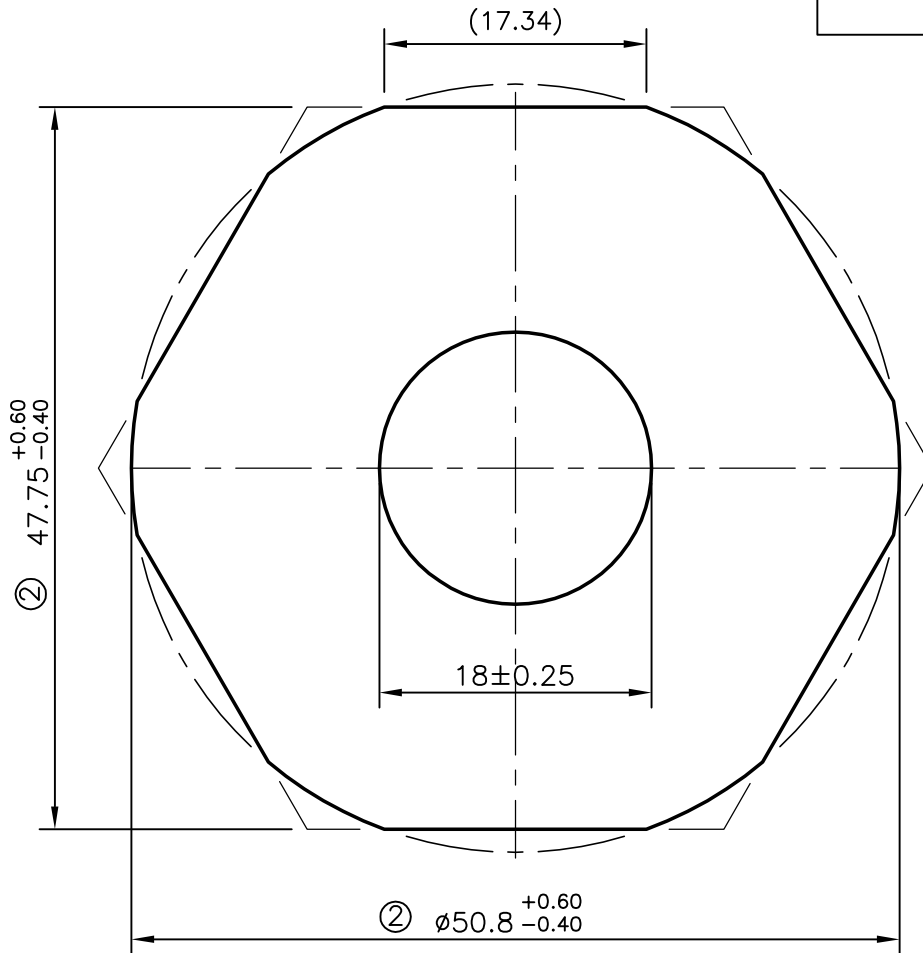
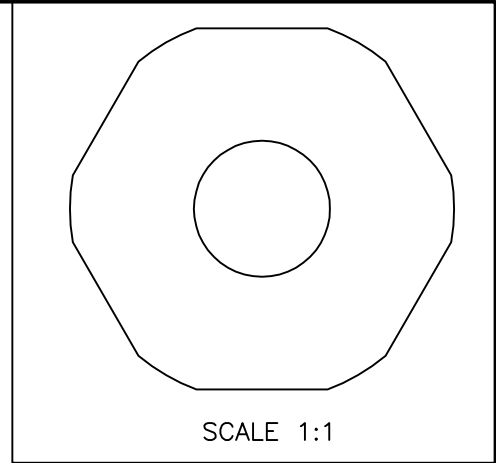



P-6869-2
S1905
29244

UNSPECIFIED CORNER RADIUS WILL BE 0.40mm



ISSUE - ② TOLERANCE CHANGED FROM 50.8 ± 0.4 TO $\phi 50.8^{+0.60}_{-0.40}$
AND 47.75 ± 0.4 TO $47.75^{+0.60}_{-0.40}$ AND OUTER SHAPE ALSO
CHANGED AS PER CUSTOMER REQUIREMENT

 SYMBOL OF QUALITY AN ISO 9002 COMPANY	JINDAL ALUMINIUM LTD. BANGALORE-560073 (INDIA)	NAME		DATE
		DRAWN	RAGHAVENDRA	14-06-2007
1. ALL DIMENSIONS ARE IN mm. 2. ROUND OFF ALL SHARP CORNERS WITH 0.40 mm. 3. TOLERANCES WILL BE AS PER DIN 17615 UNLESS OTHERWISE SPECIFIED		CHECKED		
		APPROVED		
PARTY'S NAME BRITISH ENGINES INDIA (P) LTD., BANGALORE		SCALE		2:1
		AREA mm ²		1665.952
PARTY'S DRAWING No. AS PER SPECIFICATION		PERIMETER mm.		157.46
		WEIGHT kg/m		4.498
ALLOY & TEMPER 6262 T6		DRAWING No.		SECTION No.
		P-6869-2		-
DESCRIPTION HEXAGONAL TUBE		S1905		S1905-ISSUE-2
		29244		29244