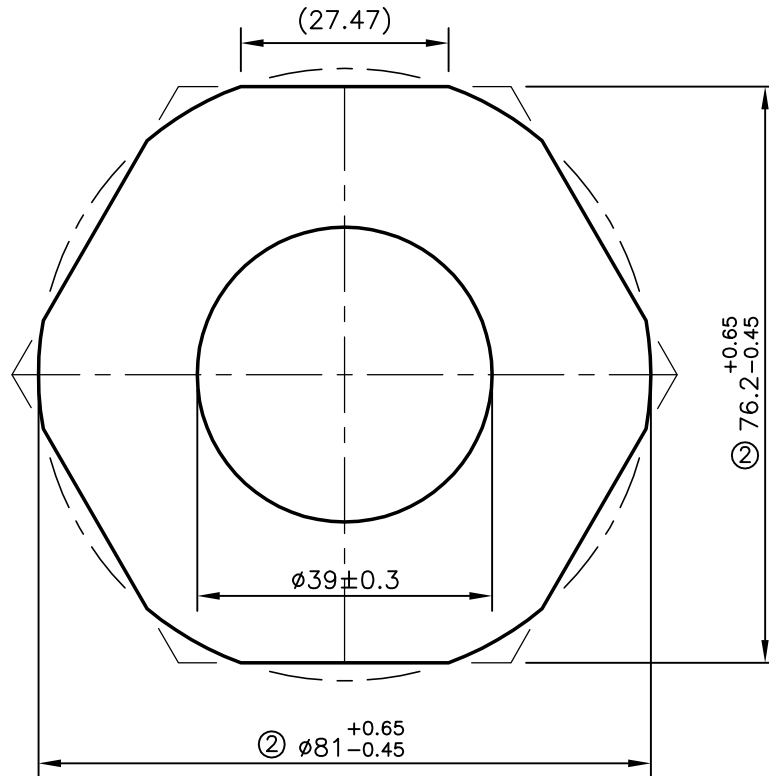


P-6836-2

S1902

29314



ISSUE - ② TOLERANCE CHANGED FROM  $81 \pm 0.45$  TO  $\phi 81^{+0.65}_{-0.45}$   
 AND  $76.2 \pm 0.45$  TO  $76.2^{+0.65}_{-0.45}$  AND OUTER SHAPE  
 ALSO CHANGED AS PER CUSTOMER REQUIREMENT

UNSPECIFIED CORNER RADIUS WILL BE 0.40mm



SYMBOL OF QUALITY  
AN ISO 9002 COMPANY

**JINDAL ALUMINIUM LTD.**  
BANGALORE-560073 (INDIA)

	NAME	DATE
DRAWN	RAGHAVENDRA	14-06-2007
CHECKED		
APPROVED		
SCALE		1:1
AREA mm <sup>2</sup>		3693.098
PERIMETER mm.		251.134
WEIGHT kg/m		9.971
DRAWING No.	SECTION No.	
P-6836-2	-	
S1902	S1902-ISSUE-2	
29314	29314	

1. ALL DIMENSIONS ARE IN mm.
2. ROUND OFF ALL SHARP CORNERS WITH 0.40 mm.
3. TOLERANCES WILL BE AS PER DIN 17615 UNLESS OTHERWISE SPECIFIED

PARTY'S NAME	BRITISH ENGINES INDIA (P) LTD., BANGALORE
PARTY'S DRAWING No.	AS PER SPECIFICATION
ALLOY & TEMPER	6082 T6
DESCRIPTION	HEXAGONAL TUBE