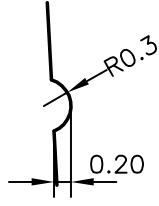


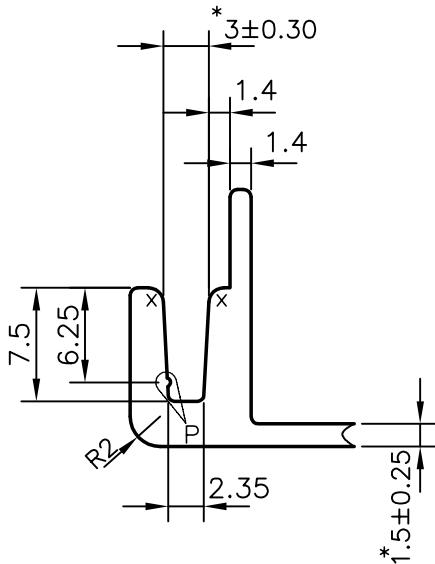
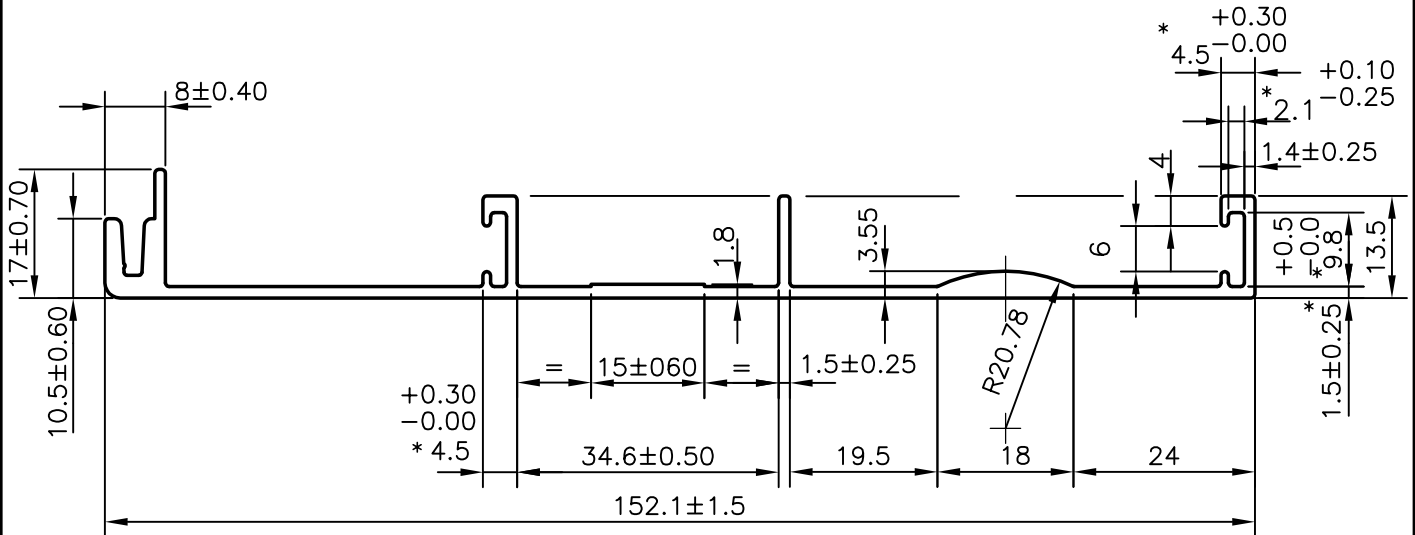
P-6812

X642

29326



DETAIL AT P



* = IMPORTANT DIMENSION
 X = 1.0 RADIUS (2)
 UNSPECIFIED RADII R 0.5 mm
 FLATNESS = 1.0 mm



SYMBOL OF QUALITY
 AN ISO 9002 COMPANY

JINDAL ALUMINIUM LTD.
 BANGALORE-560073 (INDIA)

	NAME	DATE
DRAWN	J.P.KAUSHIK	04-11-2006
CHECKED		
APPROVED		
SCALE	1:1	
AREA mm ²	389.84	
PERIMETER mm.	444.63	
WEIGHT kg/m	1.053	
DRAWING No.	SECTION No.	
P-6812	-	
X642	X642	
29326	29326	

1. ALL DIMENSIONS ARE IN mm.
2. ROUND OFF ALL SHARP CORNERS WITH 0.50 mm.
3. TOLERANCES WILL BE AS PER IS:3965-1981 UNLESS OTHERWISE SPECIFIED

PARTY'S NAME	AAF INDIA (P) LTD., BANGALORE
PARTY'S DRAWING No.	P/N 121-001
ALLOY & TEMPER	6063 T5
DESCRIPTION	MISCELLANEOUS SECTION