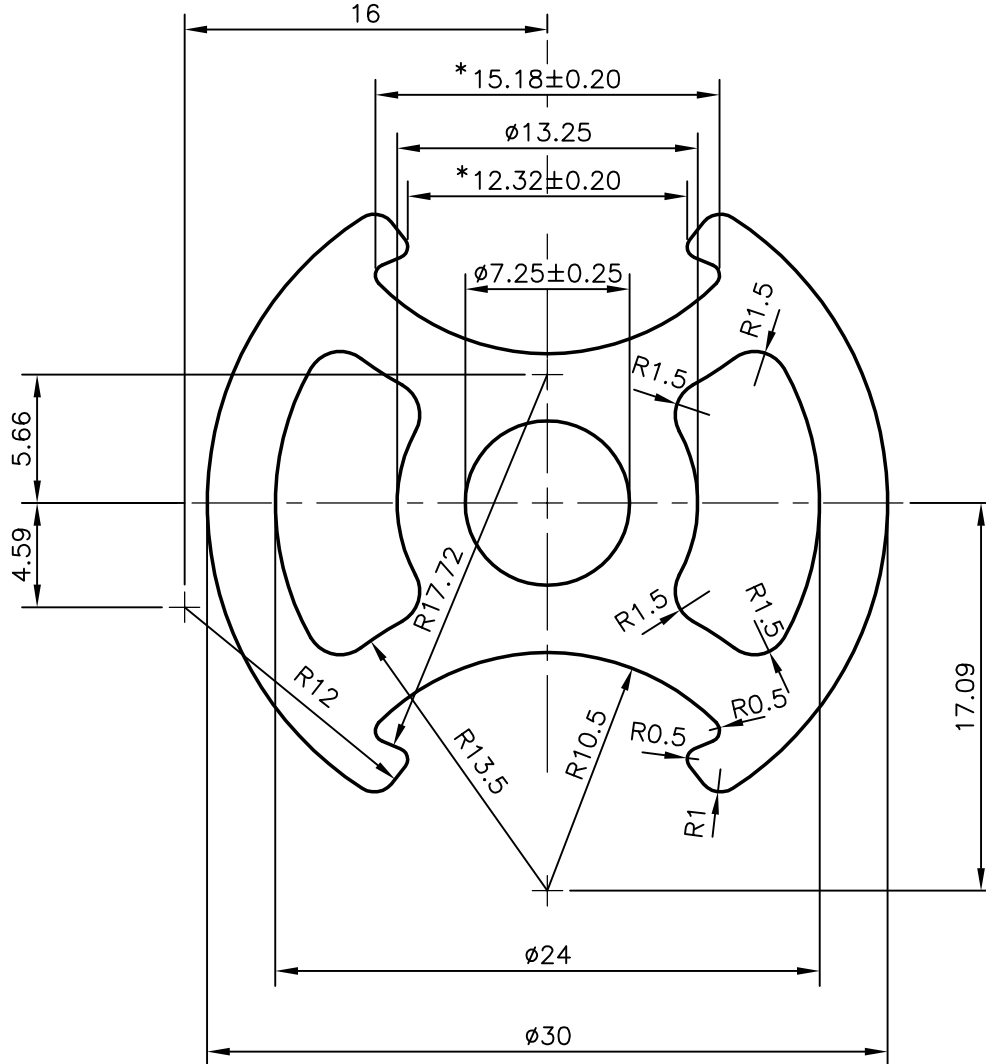
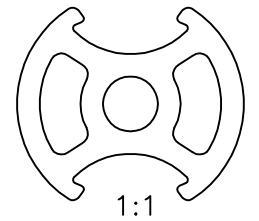


P-9455

29357



\* MARKED DIMENSIONS ARE CRITICAL



SYMBOL OF QUALITY  
AN ISO 9001 COMPANY

**JINDAL ALUMINIUM LTD.**  
BANGALORE-560073 (INDIA)

	NAME	DATE
DRAWN	J.P.KAUSHIK	29-08-2009
CHECKED		
APPROVED		

1. ALL DIMENSIONS ARE IN mm.
2. ROUND OFF ALL SHARP CORNERS WITH 0.40 mm.
3. TOLERANCES WILL BE AS PER BS:EN-755 UNLESS OTHERWISE SPECIFIED

SCALE	3:1
AREA mm <sup>2</sup>	339.942
PERIMETER mm.	113.544
WEIGHT kg/m	0.918

PARTY'S NAME	MODTEC INDUSTRIES LTD., NEW ZEALAND
PARTY'S DRAWING No.	APOLLO 2 POLE 30 mm v1.18.12.06 KR
ALLOY & TEMPER	6106 T6
DESCRIPTION	MISE. SECTION

DRAWING No.	SECTION No.
P-9455	-
29357	29357