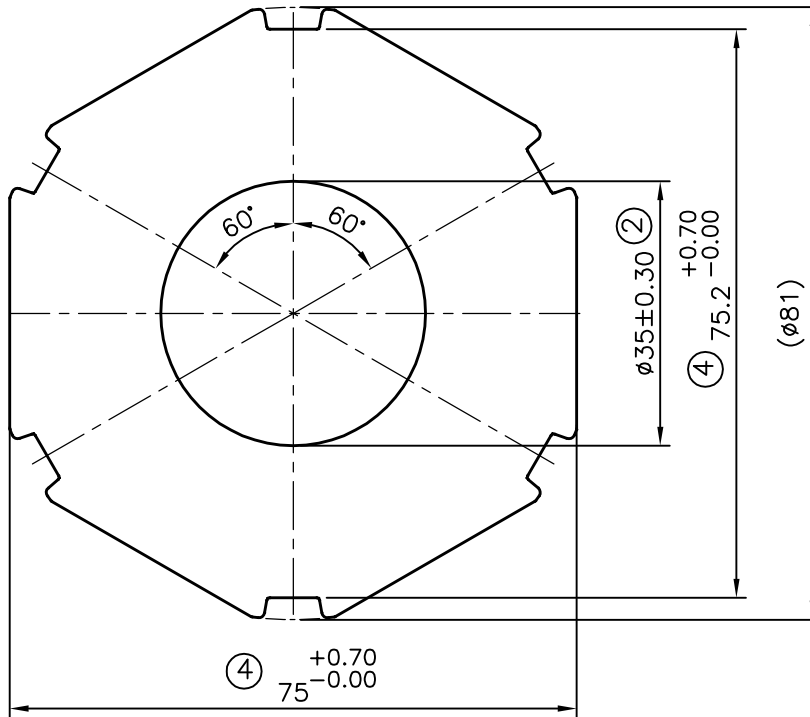
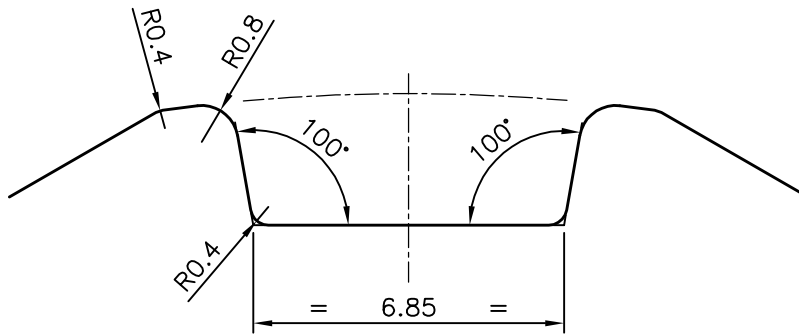


P-9272-1  
S2170  
29440




ISSUE-2 :- I.D. CHANGED FROM  $\phi$  38 TO  $\phi$ 35 mm WEIGHT ALSO CHANGED FROM 9.511 TO 9.976 kg/M ON DATED 20/07/2009

ISSUE-3 :-TOLARANCE CHANGED FROM  $75 \pm 0.60$  TO  $75^{+1.00}_{-0.00}$  ON DATED 20/07/2009

ISSUE-4 :-TOLARANCE CHANGED FROM  $75^{+1.00}_{-0.00}$  TO  $75^{+0.70}_{-0.00}$

TOLARANCE CHANGED FROM  $75.2 \pm 0.60$  TO  $75.2^{+0.70}_{-0.00}$

 SYMBOL OF QUALITY AN ISO 9001 COMPANY	<b>JINDAL ALUMINIUM LTD.</b> BANGALORE-560073 (INDIA)	NAME		DATE
		DRAWN	J.P.KAUSHIK	11-08-2014
1. ALL DIMENSIONS ARE IN mm. 2. ROUND OFF ALL SHARP CORNERS WITH 0.40 mm. 3. TOLERANCES WILL BE AS PER IS:6477-1983 UNLESS OTHERWISE SPECIFIED		CHECKED		
		APPROVED	S.S.GARG	16-08-2014
PARTY'S NAME		SCALE		1:1
		AREA mm <sup>2</sup>		3694.684
PARTY'S DRAWING No.		PERIMETER mm.		272.146
		WEIGHT kg/m		9.976
ALLOY & TEMPER		DRAWING No.	SECTION No.	
		P-9272-1	-	
DESCRIPTION		S2170	S2170(ISSUE-2)	
		29440	29440(ISSUE-4)	
HEXAGONAL TUBE				