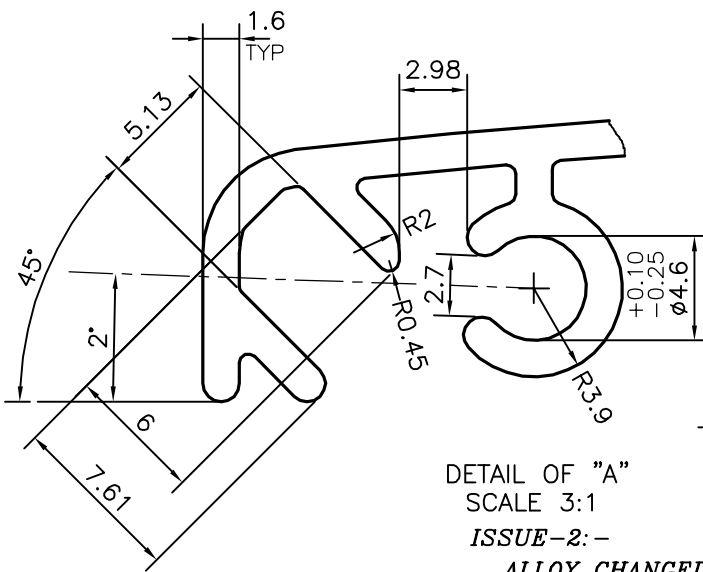
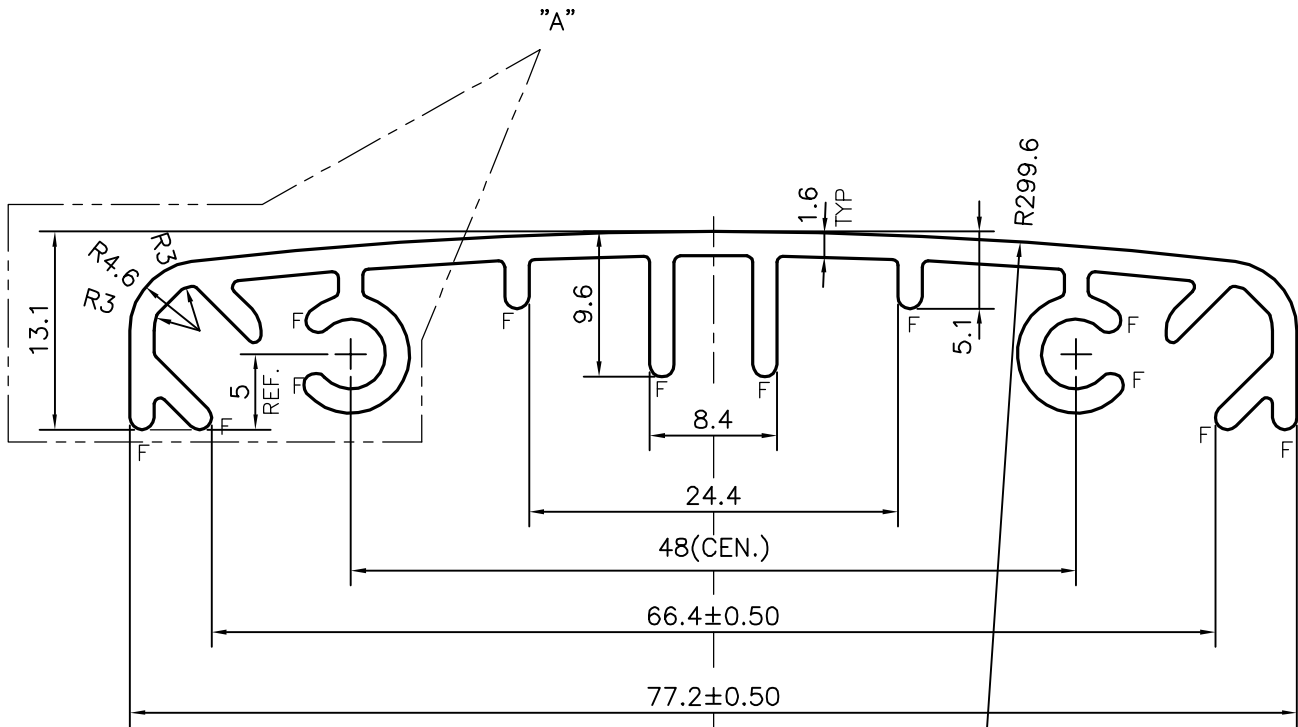
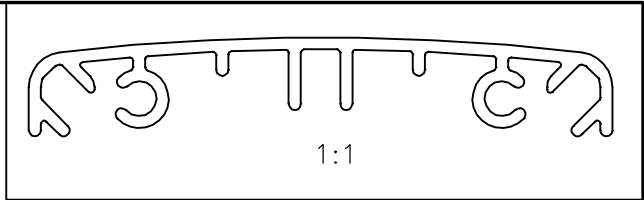


P-11314-1

29454



F = FULL RADIUS (12 PLACES)

DETAIL OF "A"
SCALE 3:1
ISSUE-2:-

ALLOY CHANGED FROM 6005 T6 TO 6063 T6



SYMBOL OF QUALITY
AN ISO 9001 COMPANY

JINDAL ALUMINIUM LTD.
BANGALORE-560073 (INDIA)

	NAME	DATE
DRAWN	J.P.KAUSHIK	11-04-2017
CHECKED		
APPROVED	B.NATARAJ	13-04-2017
SCALE		2:1
AREA mm ²		271.897
PERIMETER mm.		327.964
WEIGHT kg/m		0.734
DRAWING No.	SECTION No.	
P-11314-1	-	
29454	29454(ISSUE-2)	

1. ALL DIMENSIONS ARE IN mm.
2. ROUND OFF ALL SHARP CORNERS WITH 0.40 mm.
3. TOLERANCES WILL BE AS PER, BS:EN-755-9 UNLESS OTHERWISE SPECIFIED

PARTY'S NAME	MODTEC INDUSTRIES LTD., NEW ZEALAND
PARTY'S DRAWING No.	PART No:-SAM0836 REV. 1
ALLOY & TEMPER	6063 T6
DESCRIPTION	V V S COVER EXTRUSION