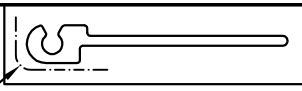


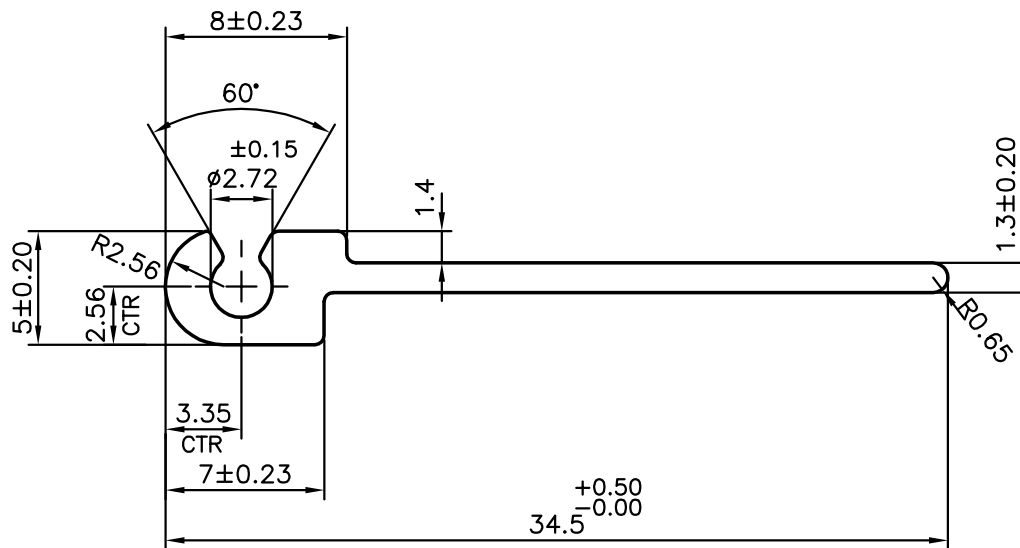
P-10922-2

S2989

29533



EXPOSED SURFACE



SYMBOL OF QUALITY
AN ISO 9001 COMPANY

JINDAL ALUMINIUM LTD.
BANGALORE-560073 (INDIA)

	NAME	DATE
DRAWN	J.P.KAUSHIK	21-06-2011
CHECKED		
APPROVED	S.S.GARG	01-07-2011
SCALE		3:1
AREA mm ²		61.063
PERIMETER mm.		82.559
WEIGHT kg/m		0.165
DRAWING No.	SECTION No.	
P-10922-2	-	
S2989	S2989	
29533	29533	

1. ALL DIMENSIONS ARE IN mm.
2. ROUND OFF ALL SHARP CORNERS WITH 0.40 mm.
3. TOLERANCES WILL BE AS PER IS:3965-1981 UNLESS OTHERWISE SPECIFIED

PARTY'S NAME	KIRAN MEDICAL SYSTEMS, NAVI MUMBAI
PARTY'S DRAWING No.	AS PER DRAWING
ALLOY & TEMPER	HE9 WP
DESCRIPTION	Al.Hinge Extrusion