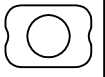
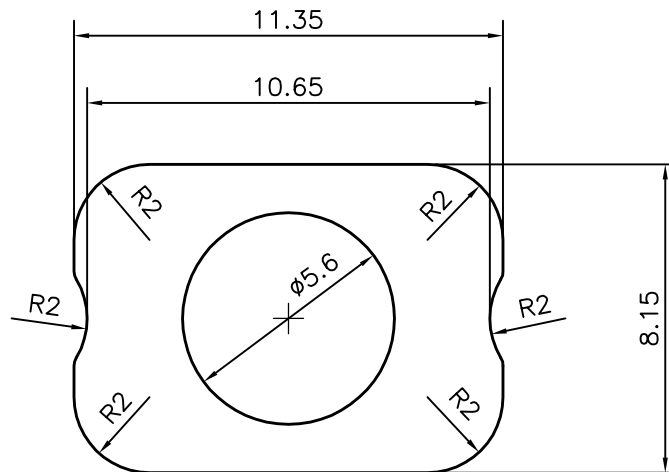


P-13948

29565



1:1



SYMBOL OF QUALITY  
AN ISO 9001 COMPANY

**JINDAL ALUMINIUM LTD.**  
BANGALORE-560073 (INDIA)

	NAME	DATE
DRAWN	J.P.KAUSHIK	03-09-2014
CHECKED		
APPROVED	S.S.GARG	20-09-2014

1. ALL DIMENSIONS ARE IN mm.
2. ROUND OFF ALL SHARP CORNERS WITH 0.40 mm.
3. TOLERANCES WILL BE AS PER IS:6477-1983 , UNLESS OTHERWISE SPECIFIED

SCALE	5:1
AREA mm <sup>2</sup>	63.359
PERIMETER mm.	35.824
WEIGHT kg/m	0.171

PARTY'S NAME	GENERAL CATEGORY, COCHIN MARKET	DRAWING No.	P-13948	SECTION No.	-
PARTY'S DRAWING No.	AS PER SAMPLE		29565		29565
ALLOY & TEMPER	HE9 WP				
DESCRIPTION	MISC. SECTION				