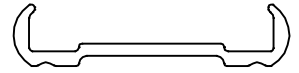


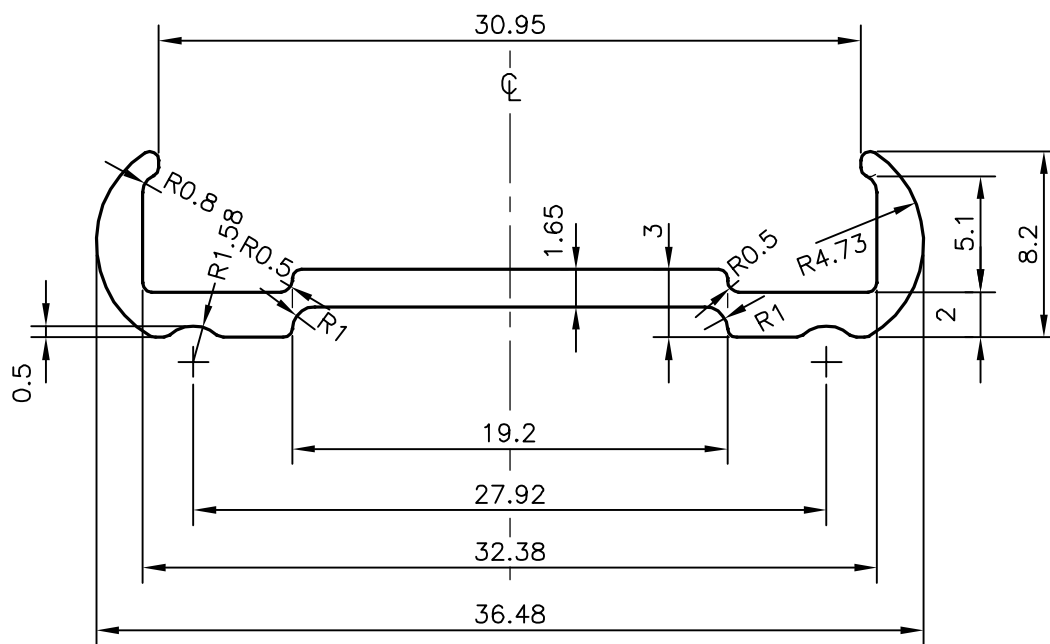
P-10974

X1507

29623



1:1



SYMBOL OF QUALITY  
AN ISO 9001 COMPANY

**JINDAL ALUMINIUM LTD.**  
BANGALORE-560073 (INDIA)

	NAME	DATE
DRAWN	J.P.KAUSHIK	20-05-2011
CHECKED		
APPROVED	S.S.GARG	04-06-2011

1. ALL DIMENSIONS ARE IN mm.
2. ROUND OFF ALL SHARP CORNERS WITH 0.40 mm.
3. TOLERANCES WILL BE AS PER, BS:EN-755-9 UNLESS OTHERWISE SPECIFIED

SCALE	3:1
AREA mm <sup>2</sup>	80.801
PERIMETER mm.	100.233
WEIGHT kg/m	0.218

PARTY'S NAME	TRIANGLE MARINE SERVICES, UAE	DRAWING No.	P-10974	SECTION No.	-
PARTY'S DRAWING No.	AS PER DRAWING	X1507	X1507		
ALLOY & TEMPER	6063 T6	29623	29623		
DESCRIPTION	TABLE EDGE 30 mm				