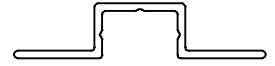


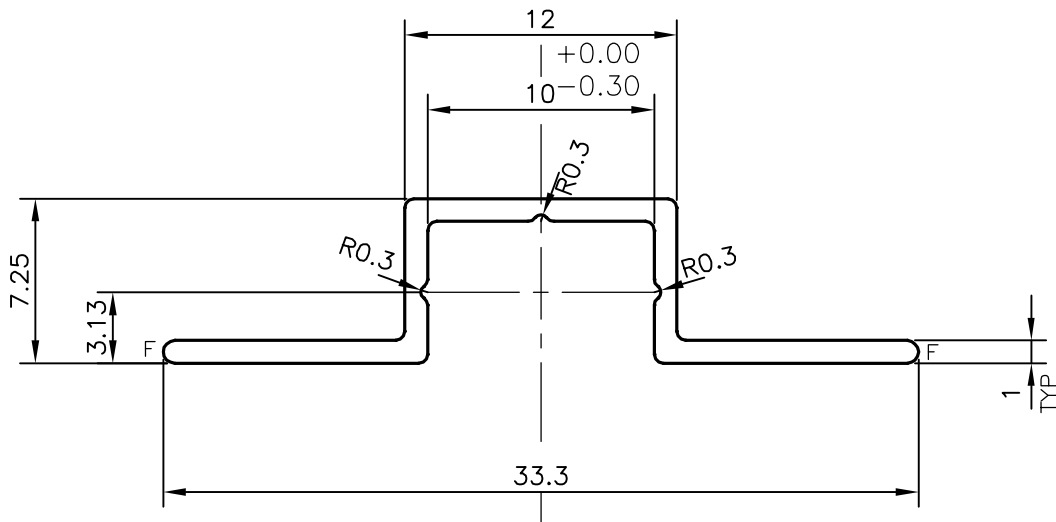
P-10979-2

X1512

29628



1:1



F= FULL RADIUS (2 PLACES)



SYMBOL OF QUALITY
AN ISO 9001 COMPANY

JINDAL ALUMINIUM LTD.
BANGALORE-560073 (INDIA)

	NAME	DATE
DRAWN	J.P.KAUSHIK	02-06-2011
CHECKED		
APPROVED	S.S.GARG	04-06-2011
SCALE		3:1
AREA mm ²		45.098
PERIMETER mm.		91.964
WEIGHT kg/m		0.122
DRAWING No.	SECTION No.	
P-10979-2	-	
X1512	X1512	
29628	29628	

1. ALL DIMENSIONS ARE IN mm.
2. ROUND OFF ALL SHARP CORNERS WITH 0.40 mm.
3. TOLERANCES WILL BE AS PER, BS:EN-755-9 UNLESS OTHERWISE SPECIFIED

PARTY'S NAME	TRIANGLE MARINE SERVICES, UAE
PARTY'S DRAWING No.	AS PER DRAWING
ALLOY & TEMPER	6063 T6
DESCRIPTION	OMEGA CHANNEL