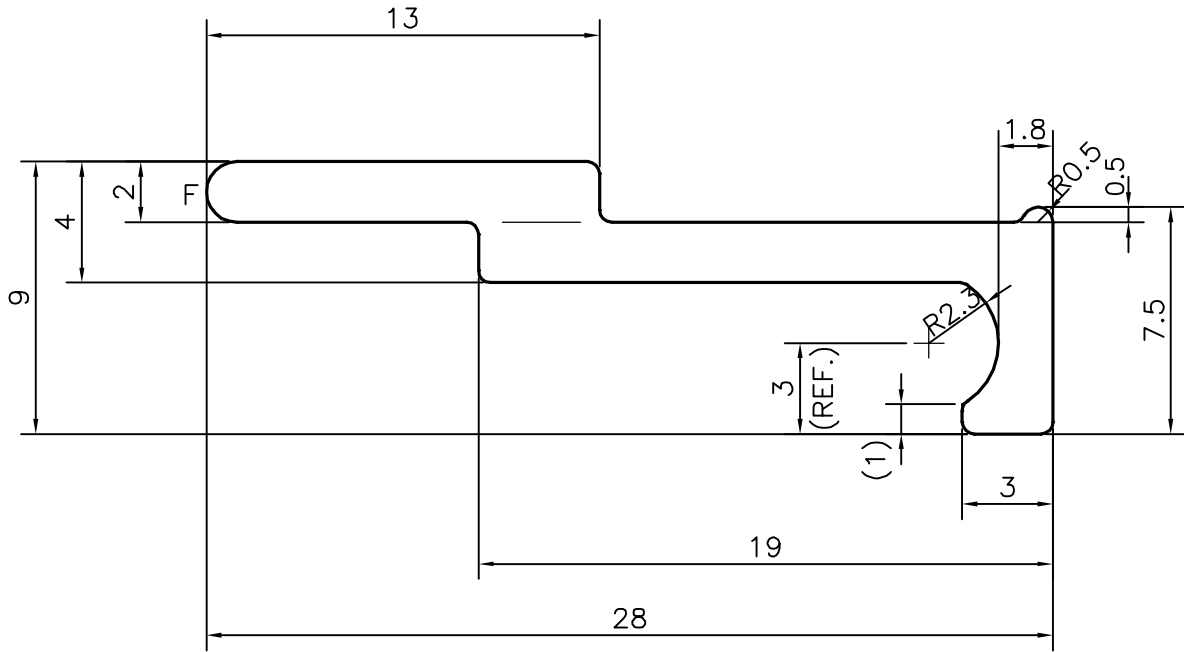
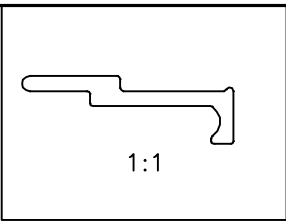


P-13383
S4151
29649



F = FULL RADIUS (1 PLACE)

TOLERANCES ON OVERALL WIDTHS & WIDTHS ACROSS FLATS OF BARS, & REGULAR SECTIONS

UPTO 6.40mm - ±0.20	UPTO 32.0mm - ±0.38	UPTO 120.0mm - ±0.85	1. STRAIGHTNESS= 1.7mm/M 2. TWIST= 1.7mm/M 3. ANGULARITY= ±1.5° 4. FLATNESS = ±0.18mm
UPTO 10.0mm - ±0.23	UPTO 50.0mm - ±0.46	UPTO 160.0mm - ±1.02	
UPTO 12.0mm - ±0.25	UPTO 60.0mm - ±0.53	UPTO 200.0mm - ±1.14	
UPTO 16.0mm - ±0.28	UPTO 80.0mm - ±0.69	UPTO 250.0mm - ±1.40	
UPTO 25.0mm - ±0.30	UPTO 100.0mm - ±0.75	UPTO 320.0mm - ±1.70	

<p>SYMBOL OF QUALITY AN ISO 9001 COMPANY</p>	<p>JINDAL ALUMINIUM LTD. BANGALORE-560073 (INDIA)</p>	NAME	DATE
		DRAWN	SRIVATHSA
		CHECKED	
		APPROVED	S.S.GARG
		SCALE	4:1
		AREA mm ²	75.454
		PERIMETER mm.	73.451
		WEIGHT kg/m	0.204
PARTY'S NAME	AAF INDIA PVT. LTD., BANGALORE	DRAWING No.	SECTION No.
PARTY'S DRAWING No.	AAF-RD-EXT 044	P-13383	-
ALLOY & TEMPER	6063 T6	S4151	S4151
DESCRIPTION	LIP BENDING STRAP SECTION	29649	29649