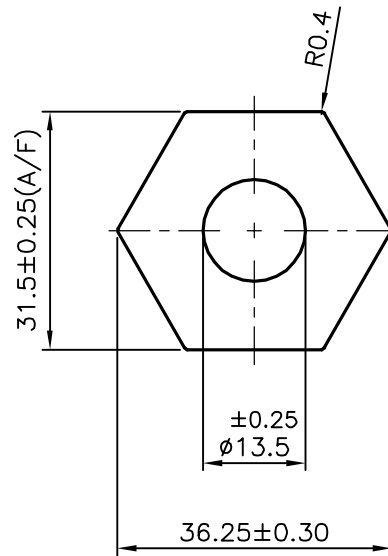


P-16990-2

S5666

29704



## TOLERANCES ON OVERALL DIMENSIONS OF HOLLOW SECTIONS

UPTO 20.0mm - ±0.30  
 UPTO 30.0mm - ±0.38  
 UPTO 40.0mm - ±0.45  
 UPTO 50.0mm - ±0.52  
 UPTO 60.0mm - ±0.60

UPTO 80.0mm - ±0.70  
 UPTO 100.0mm - ±0.80  
 UPTO 120.0mm - ±0.90  
 UPTO 140.0mm - ±1.00  
 UPTO 160.0mm - ±1.14

UPTO 180.0mm - ±1.27  
 UPTO 200.0mm - ±1.40  
 UPTO 225.0mm - ±1.52

1. STRAIGHTNESS=1.7mm/M  
 2. TWIST=1.7mm/M  
 3. ANGULARITY= ±2°  
 4. FLATNESS =0.006xWIDTH



SYMBOL OF QUALITY  
 AN ISO 9001 COMPANY

**JINDAL ALUMINIUM LTD.**  
 BANGALORE-560073 (INDIA)

|          | NAME        | DATE       |
|----------|-------------|------------|
| DRAWN    | J.P.KAUSHIK | 29-01-2018 |
| CHECKED  |             |            |
| APPROVED | J.N.RAY     | 07-02-2018 |

1. ALL DIMENSIONS ARE IN mm.  
 2. ROUND OFF ALL SHARP CORNERS WITH 0.40 mm.  
 3. TOLERANCES WILL BE AS PER IS:6477-1983 UNLESS OTHERWISE SPECIFIED

|                      |             |
|----------------------|-------------|
| SCALE                | 1:1         |
| AREA mm <sup>2</sup> | 716.123     |
| PERIMETER mm.        | 108.861     |
| WEIGHT kg/m          | 1.934       |
| DRAWING No.          | SECTION No. |
| P-16990-2            | -           |
| S5666                | S5666       |
| 29704                | 29704       |
|                      |             |
|                      |             |

|                     |  |
|---------------------|--|
| PARTY'S NAME        | BRITISH ENGINES (INDIA) PVT. LTD., BANGALORE |
| PARTY'S DRAWING No. | CMP31759 ISSUE-04 & REQUIREMENT              |
| ALLOY & TEMPER      | 6262 T6                                      |
| DESCRIPTION         | HEXAGONAL TUBE                               |