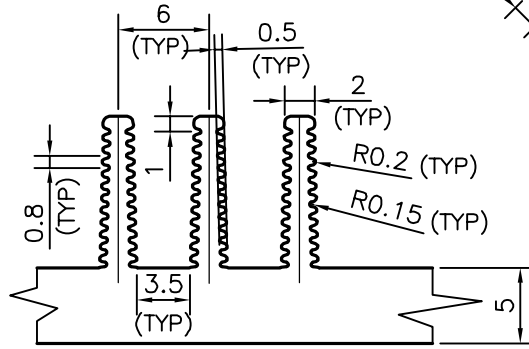
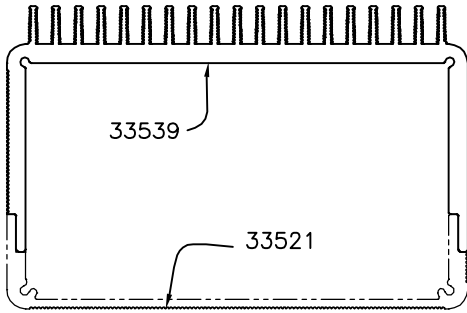
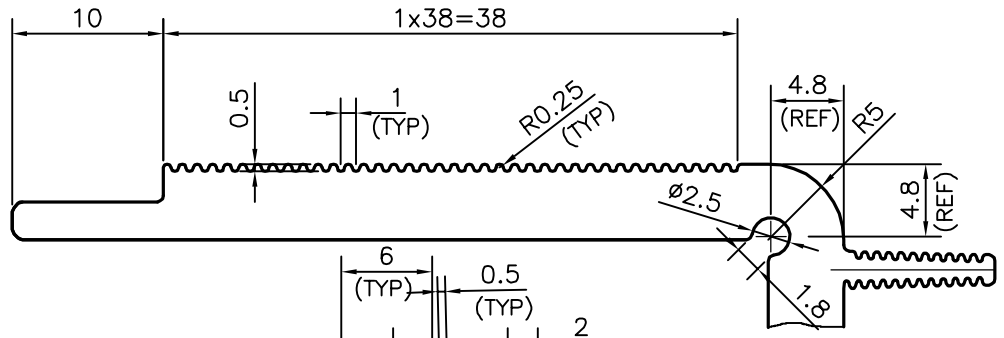
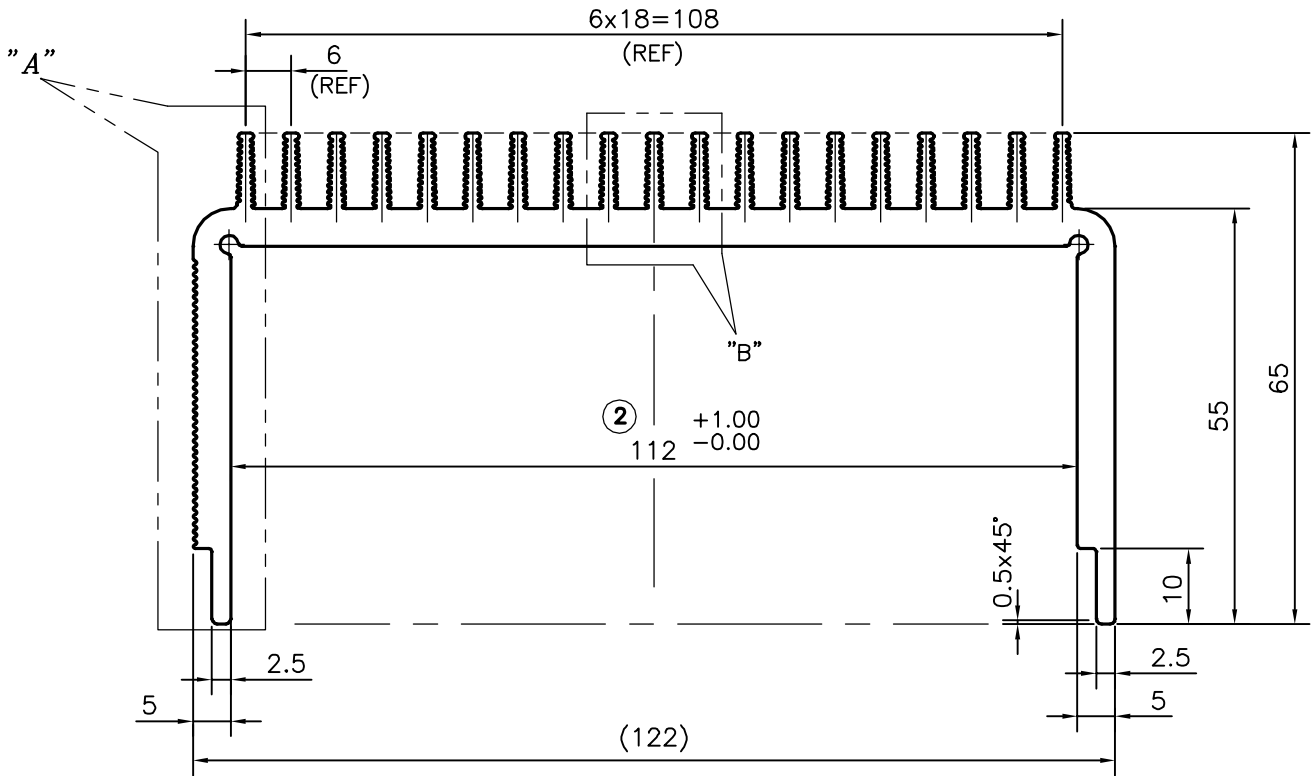


P-12361
S3611
33539



DETAIL A
SCALE 2:1

DETAIL B
SCALE 2:1



ISSUE 2 : DIMENSION & TOLERANCE ADDED 112 $\begin{matrix} +1.00 \\ -0.00 \end{matrix}$
AS PER E-MAIL DATED 27-11-2013



SYMBOL OF QUALITY
AN ISO 9001 COMPANY

JINDAL ALUMINIUM LTD.
BANGALORE-560073 (INDIA)

	NAME	DATE
DRAWN	SRIVATHSA	27-11-2013
CHECKED		
APPROVED	S.S.GARG	29-11-2013
SCALE		1:1
AREA mm ²		1371.848
PERIMETER mm.		1122.360
WEIGHT kg/m		3.704
DRAWING No.	SECTION No.	
P-12361	-	
S3611	S3611(ISSUE-2)	
33539	33539	

- ALL DIMENSIONS ARE IN mm.
- ROUND OFF ALL SHARP CORNERS WITH 0.40 mm.
- TOLERANCES WILL BE AS PER IS:3965-1981, UNLESS OTHERWISE SPECIFIED

PARTY'S NAME	GALLANT ELECTRONIC CONTROLS, BANGALORE
PARTY'S DRAWING No.	MODIFIED SECTION OF 26476
ALLOY & TEMPER	6063 T6
DESCRIPTION	HEAT SINK SECTION