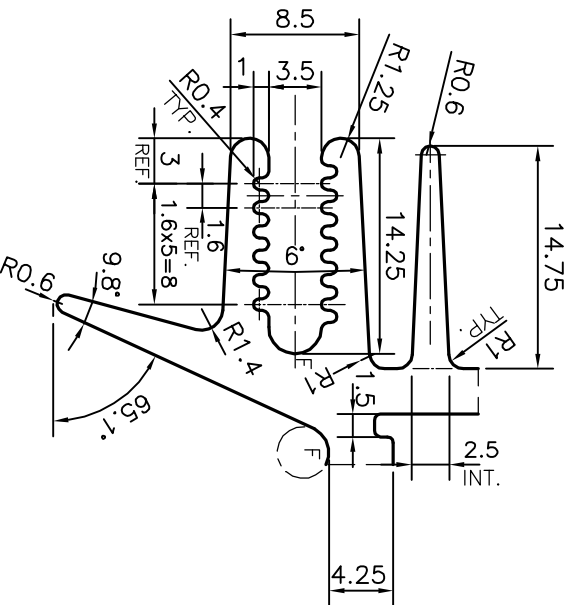
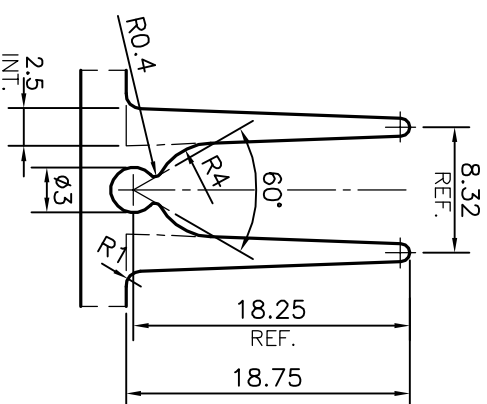


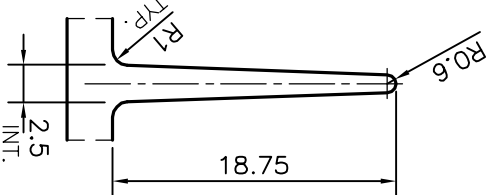
DETAIL OF "D"
SCALE 2:1



DETAIL OF "A"
SCALE 2:1



DETAIL OF "B"
SCALE 2:1



DETAIL OF "C"
SCALE 2:1

TOLERANCES ON OVERALL WIDTHS & WIDTHS ACROSS FLATS OF BARS, & REGULAR SECTIONS		TOLERANCES ON OVERALL WIDTHS & WIDTHS ACROSS FLATS OF BARS, & REGULAR SECTIONS	
UPTO 6.40mm	±0.20	UPTO 32.0mm	±0.38
UPTO 10.0mm	±0.23	UPTO 50.0mm	±0.46
UPTO 12.0mm	±0.25	UPTO 60.0mm	±0.53
UPTO 16.0mm	±0.28	UPTO 80.0mm	±0.69
UPTO 25.0mm	±0.30	UPTO 100.0mm	±0.75
UPTO 120.0mm	±0.85	UPTO 160.0mm	±1.02
UPTO 200.0mm	±1.14	UPTO 250.0mm	±1.40
UPTO 300.0mm	±1.65	UPTO 300.0mm	±1.65

JINDAL SYMBOL OF QUALITY AN ISO 9001 COMPANY JINDAL ALUMINIUM LTD. BANGALORE-560073 (INDIA)		1. STRAIGHTNESS=1.7mm/M 2. TWIST=1.7mm/M 3. ANGULARITY= ±2° 4. FLATNESS =0.007xWIDTHH
DRAWN	NAME	DATE
CHECKED	PARVESH	23-10-2013
APPROVED	S.S.GARG	02-11-2013
SCALE	1:1	
AREA	mm ²	4056.05
PERIMETER	mm.	2927.243
WEIGHT	kg/m	10.951
DRAWING No.	SECTION No.	
P-13056-1	-	
S3908	S3908	
33558	33558	

1. ALL DIMENSIONS ARE IN mm.
 2. ROUND OFF ALL SHARP CORNERS WITH 0.40 mm.
 3. TOLERANCES WILL BE AS PER BS:EN-755-9, UNLESS OTHERWISE SPECIFIED

PARTY'S NAME	ENAPROS, DELHI
PARTY'S DRAWING No.	AS PER AUTO CAD DRAWING
ALLOY & TEMPER	6063 T6
DESCRIPTION	HEAT SINK SECTION