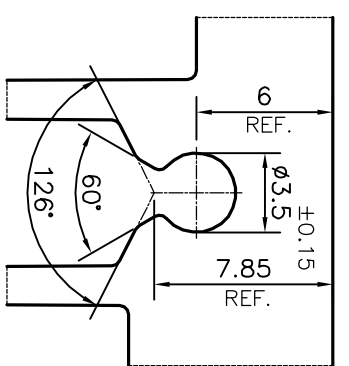
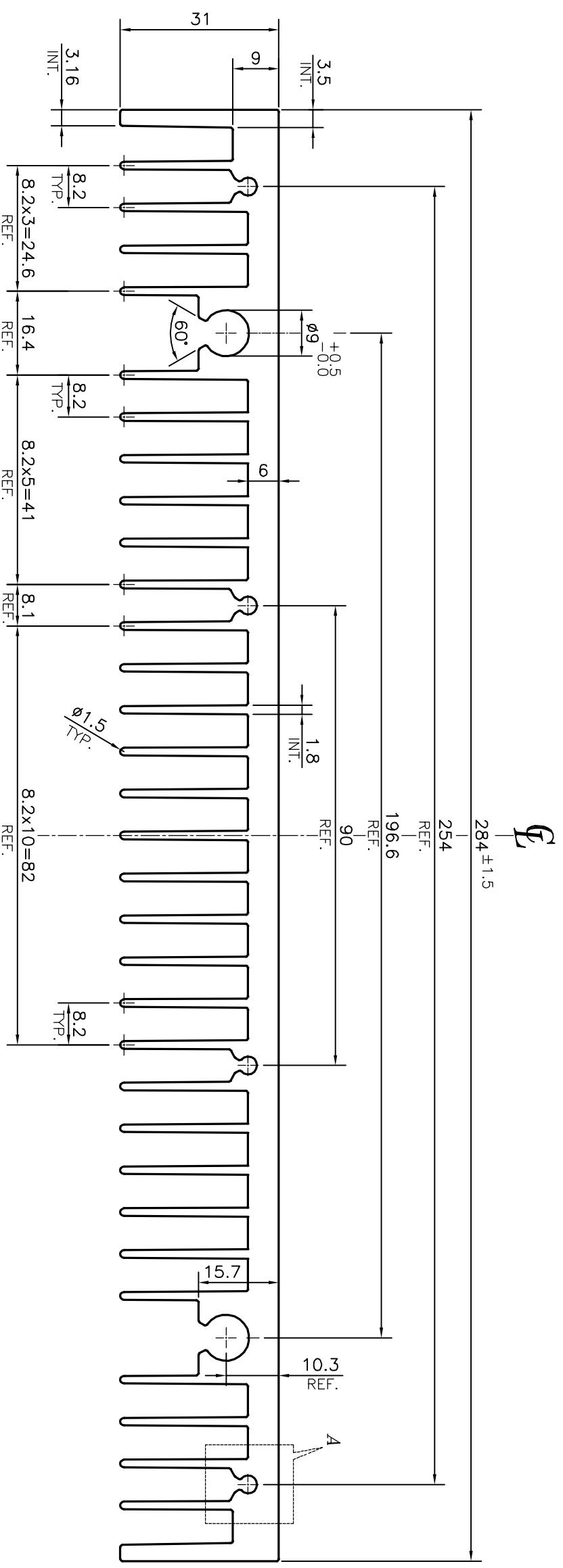



P-14818
S4536
33566



TOLERANCES ON OVERALL WIDTHS & WIDTHS ACROSS FLATS OF BARS, & REGULAR SECTIONS

UPTO 6.40mm - ±0.20	UPTO 32.0mm - ±0.38	UPTO 120.0mm - ±0.85
UPTO 10.0mm - ±0.23	UPTO 50.0mm - ±0.46	UPTO 160.0mm - ±1.02
UPTO 12.0mm - ±0.25	UPTO 60.0mm - ±0.53	UPTO 200.0mm - ±1.14
UPTO 16.0mm - ±0.28	UPTO 80.0mm - ±0.69	UPTO 250.0mm - ±1.40
UPTO 25.0mm - ±0.30	UPTO 100.0mm - ±0.75	UPTO 300.0mm - ±1.65

 JINDAL ALUMINIUM LTD. BANGALORE-560073 (INDIA)		DRAWN NAME PARVESH DATE 01-07-2015 CHECKED APPROVED S.S.GARG 15-07-2015
1. ALL DIMENSIONS ARE IN mm. 2. ROUND OFF ALL SHARP CORNERS WITH 0.40 mm. 3. TOLERANCES WILL BE AS PER IS:3965-1981, UNLESS OTHERWISE SPECIFIED		
PARTY'S NAME	AXIOM EV PRODUCTS PVT. LTD., HYDERABAD	
PARTY'S DRAWING No.	AS PER AUTOCAD DRAWING-C7AK120070	
ALLOY & TEMPER	6063 T6	
DESCRIPTION	HEAT SINK SECTION	

DETAIL OF "A"
SCALE 3:1