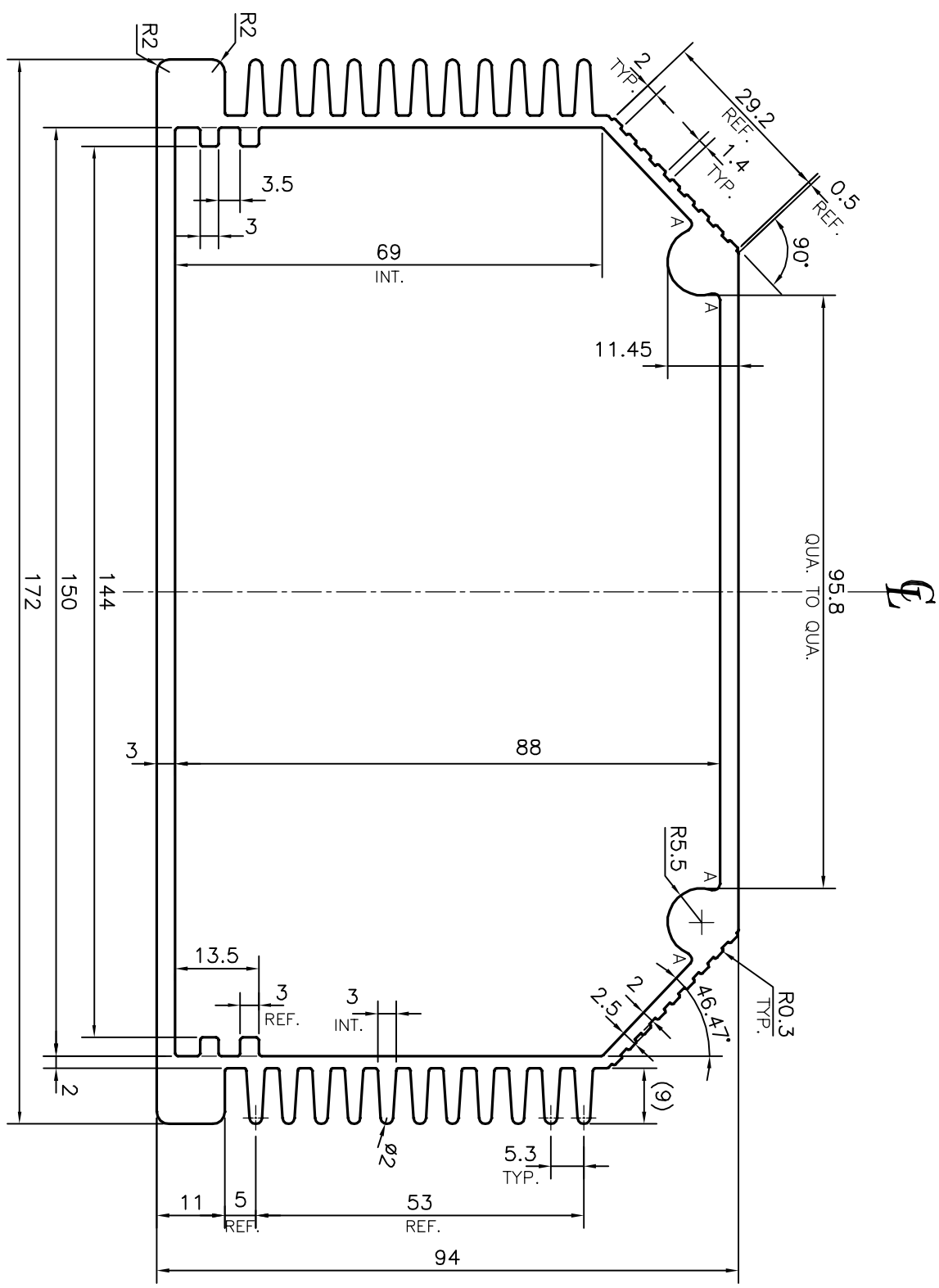


P-13488
S4066
33579



A = RADIUS 1 mm. (4 PLACES)

TOLERANCES ON OVERALL WIDTHS & WIDTHS ACROSS FLATS OF BARS, & REGULAR SECTIONS

UPTO 6.40mm - ±0.20	UPTO 32.0mm - ±0.38	UPTO 120.0mm - ±0.85
UPTO 10.0mm - ±0.23	UPTO 50.0mm - ±0.46	UPTO 160.0mm - ±1.02
UPTO 12.0mm - ±0.25	UPTO 60.0mm - ±0.53	UPTO 200.0mm - ±1.14
UPTO 16.0mm - ±0.28	UPTO 80.0mm - ±0.69	UPTO 250.0mm - ±1.40
UPTO 25.0mm - ±0.30	UPTO 100.0mm - ±0.75	UPTO 300.0mm - ±1.65

<p>JINDAL SYMBOL OF QUALITY AN ISO 9001 COMPANY</p>		<p>JINDAL ALUMINIUM LTD. BANGALORE-560073 (INDIA)</p>	
<p>1. ALL DIMENSIONS ARE IN mm. 2. ROUND OFF ALL SHARP CORNERS WITH 0.40 mm. 3. TOLERANCES WILL BE AS PER IS:6477-1983, UNLESS OTHERWISE SPECIFIED</p>			
PARTY'S NAME		SANJIVANEE AGRO, AHMEDABAD	
PARTY'S DRAWING No.		AS PER AUTOCAD DRAWING-CONTROLLER COVER	
ALLOY & TEMPER		HE9 WP	
DESCRIPTION		ELECTRICAL SECTION	

SCALE	1:1
AREA mm ²	2055.745
PERIMETER mm.	865.393
WEIGHT kg/m	5.551
DRAWING No.	SECTION No.
P-13488	-
S4066	S4066
33579	33579