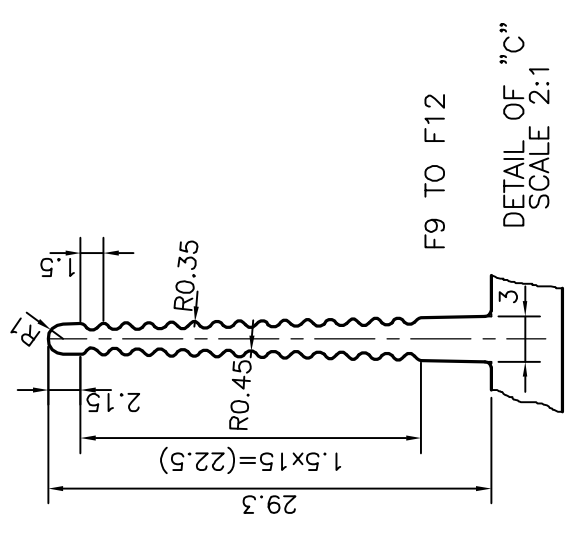
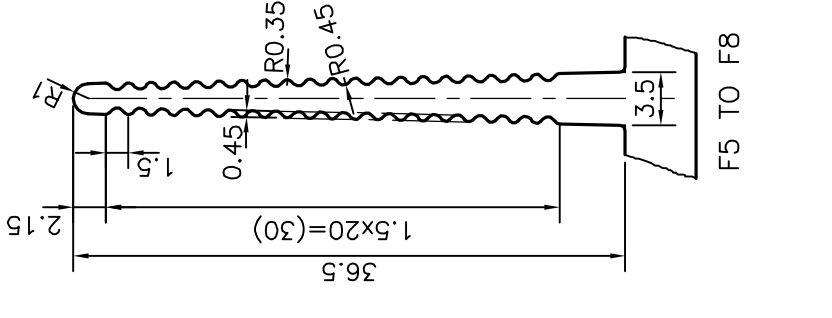
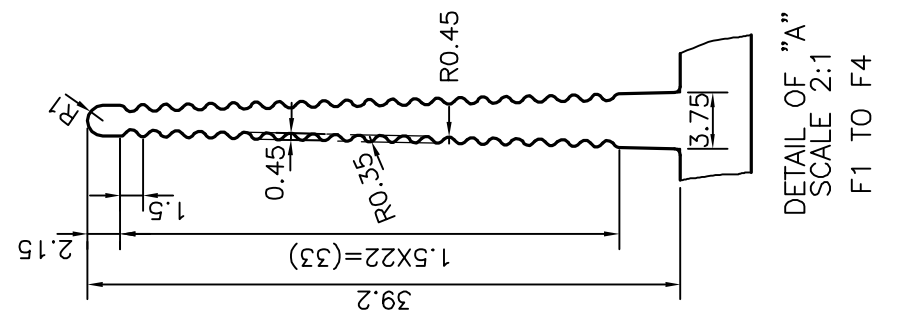
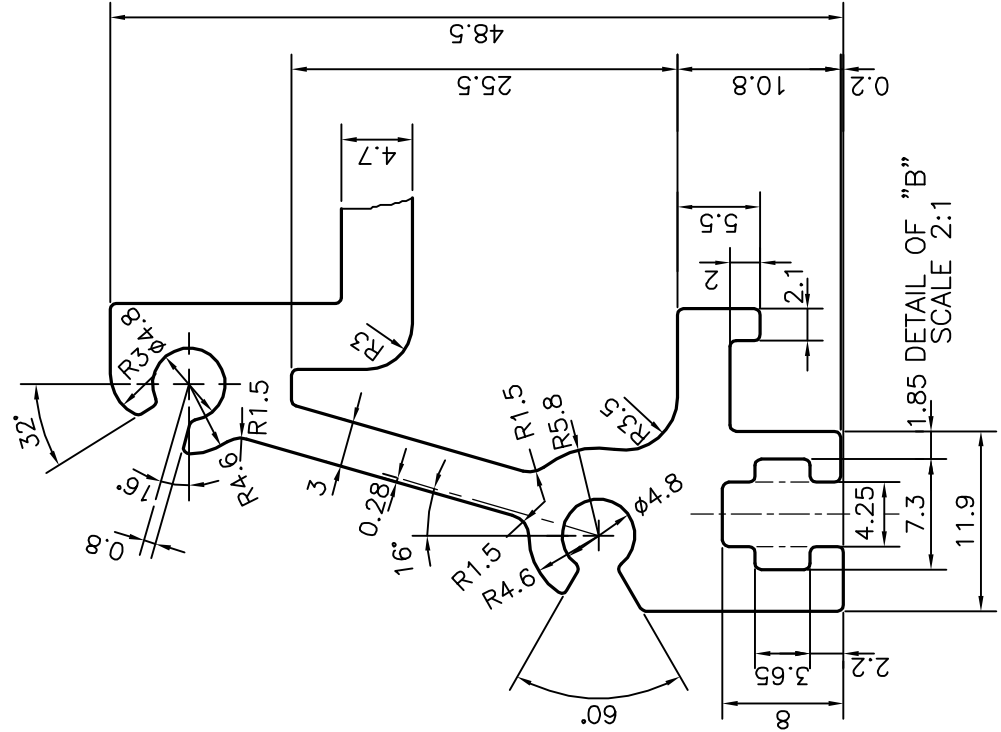
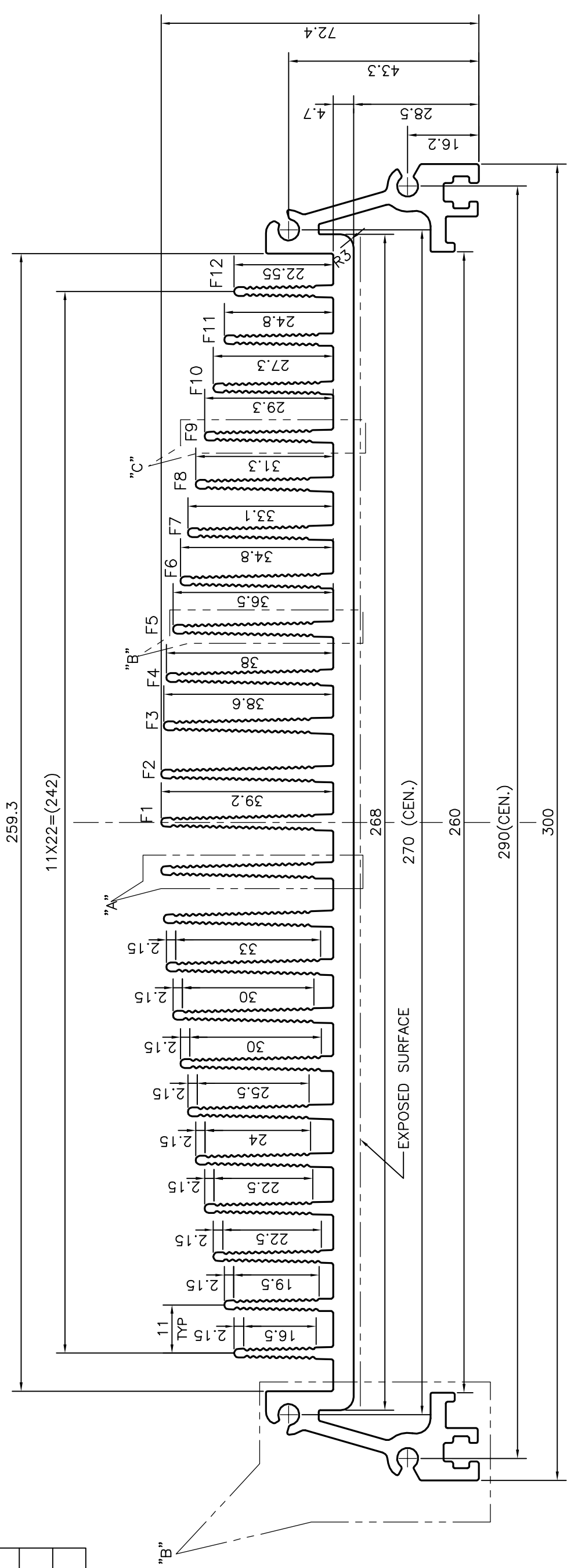


P-15632

S4912

33589



	JINDAL ALUMINIUM LTD. BANGALORE-560073 (INDIA)	
	SYMBOL OF QUALITY AN ISO 9001 COMPANY	PARTY'S NAME MULTI LIGHTING CONTROLS PVT. LTD., DAMAN
	1. ALL DIMENSIONS ARE IN mm. 2. ROUND OFF ALL SHARP CORNERS WITH 0.40 mm. 3. TOLERANCES WILL BE AS PER IS:3965-1981 UNLESS OTHERWISE SPECIFIED	PARTY'S DRAWING No. MLC-LFT-160/011
APPROVED S.S. GARG	NAME J.P. KAUSHIK	DATE 27-02-2016
SCALE 1:1	CHECKED	APPROVED S.S. GARG
AREA mm ² 3630.549	DRAWING No. P-15632	SECTION No. -
PERIMETER mm. 2625.545	ALLOY & TEMPER HE9 WP	DRAWING No. S4912
WEIGHT kg/m 9.802	DESCRIPTION HEAT SINK SECTION	DRAWING No. 33589

JINDAL SYMBOL OF QUALITY AN ISO 9001 COMPANY	JINDAL ALUMINIUM LTD. BANGALORE-560073 (INDIA)	
1. ALL DIMENSIONS ARE IN mm. 2. ROUND OFF ALL SHARP CORNERS WITH 0.40 mm. 3. TOLERANCES WILL BE AS PER IS:3965-1981 UNLESS OTHERWISE SPECIFIED	PARTY'S NAME MULTI LIGHTING CONTROLS PVT. LTD., DAMAN	PARTY'S DRAWING No. MLC-LFT-160/011
APPROVED S.S. GARG	NAME J.P. KAUSHIK	DATE 27-02-2016
SCALE 1:1	CHECKED	APPROVED S.S. GARG
AREA mm ² 3630.549	DRAWING No. P-15632	SECTION No. -
PERIMETER mm. 2625.545	ALLOY & TEMPER HE9 WP	DRAWING No. S4912
WEIGHT kg/m 9.802	DESCRIPTION HEAT SINK SECTION	DRAWING No. 33589