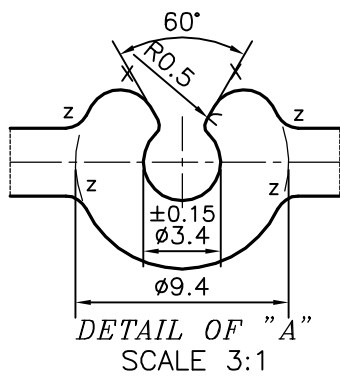
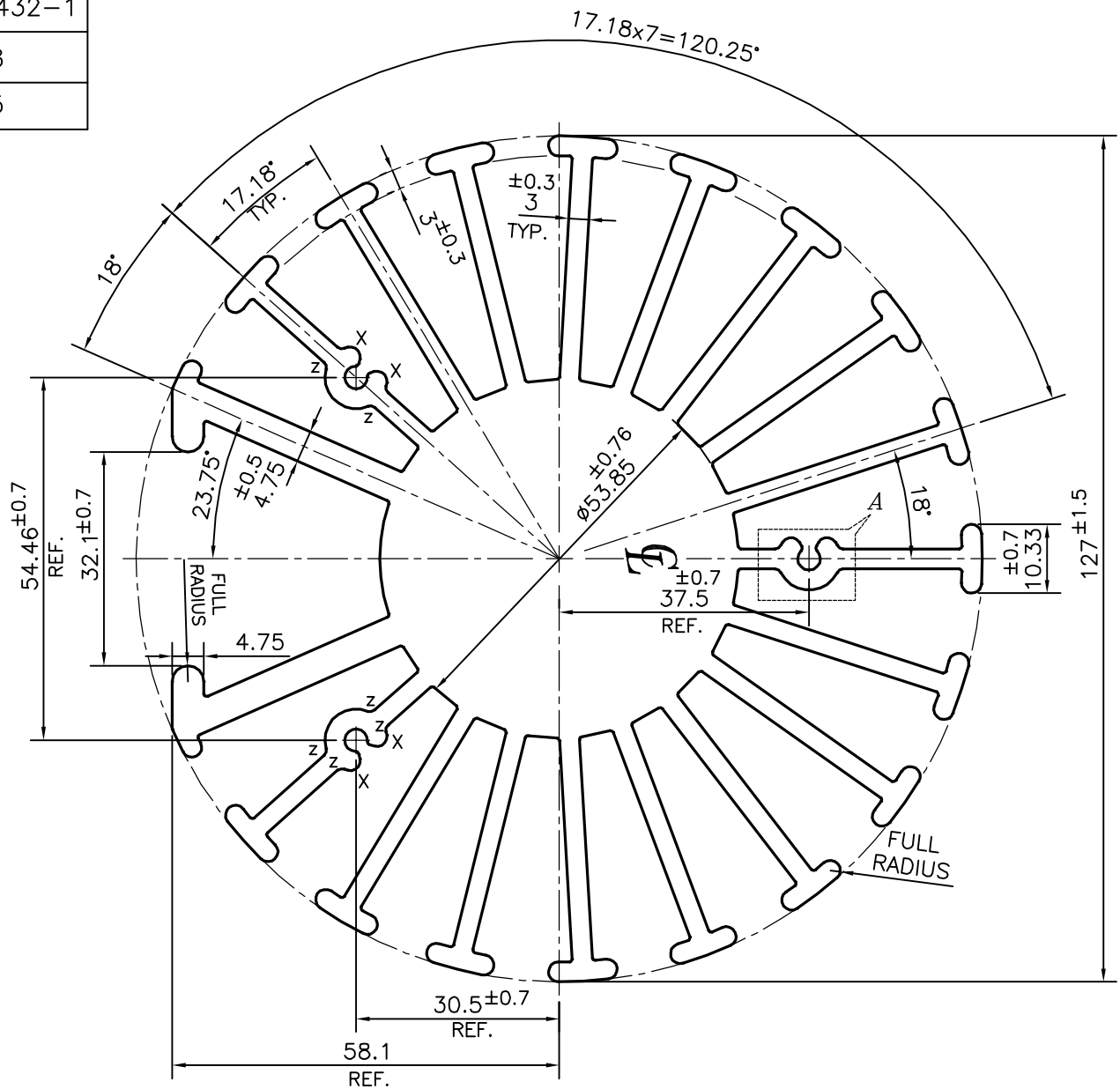



P-15432-1
S4788
33595



X = RADIUS 1.5 mm. (6 PLACES)
Z = RADIUS 1 mm. (12 PLACES)

 SYMBOL OF QUALITY AN ISO 9001 COMPANY	JINDAL ALUMINIUM LTD. BANGALORE-560073 (INDIA)	NAME	DATE
		DRAWN	PARVESH 15-12-2015
		CHECKED	
		APPROVED	S.S.GARG 21-12-2015
		SCALE	1:1
		AREA mm ²	4960.584
		PERIMETER mm.	1815.481
		WEIGHT kg/m	13.394
PARTY'S NAME	AUTO DIECASTING COMPANY, COIMBATORE	DRAWING No.	SECTION No.
PARTY'S DRAWING No.	AS PER AUTOCAD DRAWING-93029240 & REQUIREMENT	P-15432-1	-
ALLOY & TEMPER	6063 T6	S4788	S4788
		33595	33595
DESCRIPTION	ROUND HEAT SINK SECTION		