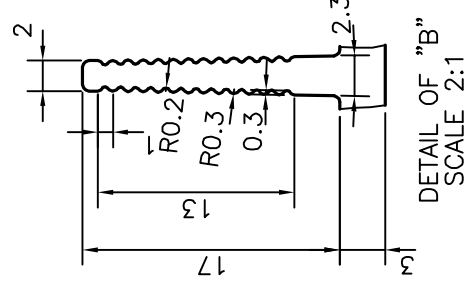
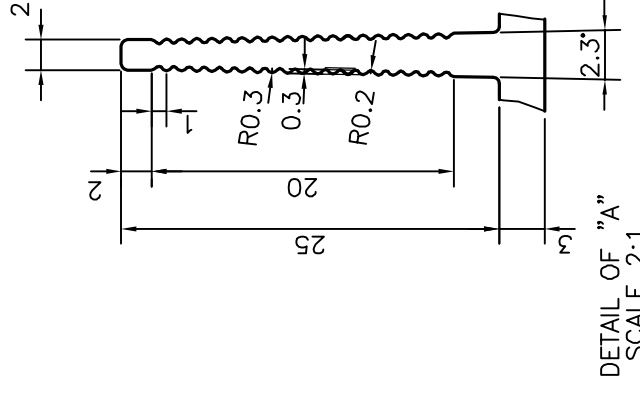
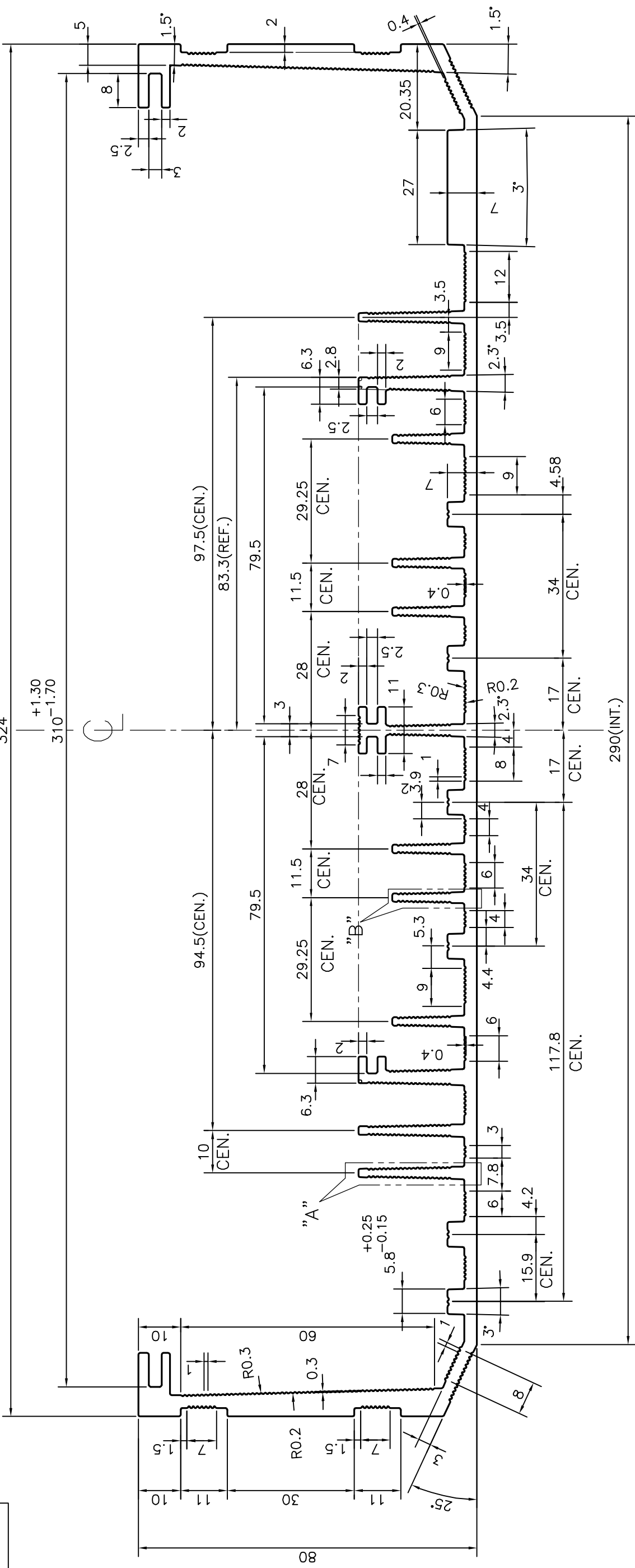
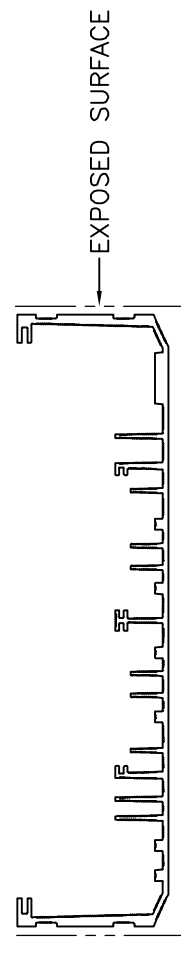


P-14640  
S4466  
33601

+1.30  
324 -1.70  
+1.30  
310 -1.70



- 1 FLATNESS ON 290 mm WIDTH WILL BE  $\pm 1.0$  mm
- 2 LOCAL VARIATION IN FLATNESS MAY BE UP TO 1 mm OVER 100 mm WIDTH.



		<b>JINDAL ALUMINIUM LTD.</b> BANGALORE-560073 (INDIA)	
SYMBOL OF QUALITY AN ISO 9002 COMPANY	NAME J.P.KAUSHIK	DATE 13-05-2015	
1. ALL DIMENSIONS ARE IN mm. 2. ROUND OFF ALL SHARP CORNERS WITH 0.40 mm. 3. TOLERANCES WILL BE AS PER IS:3965-1981 UNLESS OTHERWISE SPECIFIED	CHECKED	APPROVED S.S.GARG	18-05-2015
PARTY'S NAME NTL ELECTRONICS INDIA LTD., NOIDA	SCALE 1:1	AREA mm <sup>2</sup>	2664.799
PARTY'S DRAWING No. AS PER AutoCAD DRAWING-NL-DRG-QAD-L124 (A-1)	WEIGHT kg/m	PERIMETER mm.	1796.943
ALLOY & TEMPER 6063 T6	DRAWING No. P-14640	SECTION No. S4466	7.195
DESCRIPTION HEAT SINK SECTION			33601

+1.30 +1.30 +0.25  
-1.70 -1.70 -0.15  
TOLERANCE ADDED ON DIMENSION 324, 310 & 5.8  
TOLERANCE CHANGED ON FLATNESS ON 290 $\pm 1.8$  TO  $\pm 1.0$   
AS PER E-MAIL DATED 29-06-2015